

DATASHEET

CD210b Mouse Monoclonal Antibody(C2764)

CAT. NO. AMA02376

KEY FEATURES

Target	CD210b	Source / Host	Mouse
Reactivity	Human, Rat	Clonality	Monoclonal
Applications	WB, FC	Conjugation	Unconjugated
Form / Buffer	Mouse IgG1. Liquid in PBS, pH 7.3, 30% glycerol, and 0.01% sodium azide.	Storage	at-20°C

BACKGROUND

Shared cell surface receptor required for the activation of five class 2 cytokines: IL10, IL22, IL26, IL28, and IFNL1. The IFNLR1/IL10RB dimer is a receptor for the cytokine ligands IFNL2 and IFNL3 and mediates their antiviral activity. The ligand/receptor complex stimulate the activation of the JAK/STAT signaling pathway leading to the expression of IFN-stimulated genes (ISG), which contribute to the antiviral state.

APPLICATION

To ensure optimal assay performance, AREX recommends conducting reagent titration tailored to each testing system for optimal detection results.

WB	1:500 - 1:1000
FC	1:100 - 1:200

*Results are sample-specific. Please refer to your local assay conditions and test parameters for reference.

PRODUCT OVERVIEW

Description	Mouse monoclonal to CD210b
Specificity	Recognizes endogenous levels of CD210b protein
Antibody Type	Primary antibody
Immunogen	Recombinant fusion protein of human CD210b expressed in E. Coli
Purification	This antibody is purified through a protein G column.
Molecular Weight	Predicted: 37 kD; Observed: 74 kD
Form/Buffer	Mouse IgG1. Liquid in PBS, pH 7.3, 30% glycerol, and 0.01% sodium azide.
Alternative Names	CRFB4; D21S58; D21S66; Interleukin-10 receptor subunit beta; IL-10 receptor subunit beta; IL-10R subunit beta; IL-10RB; Cytokine receptor class-II member 4; Cytokine receptor family 2 member 4; CRF2-4; Interleukin-10 receptor subunit 2; IL-10R subunit 2; IL-10R2; CDw210b
Gene Symbol	IL10RB
Entrez Gene	3588(Human)
SwissProt	Q08334(Human)

*AREX continuously optimizes our products. Webpage content may not reflect the latest updates. For inquiries, please contact info@arexbio.com or your local distributor.

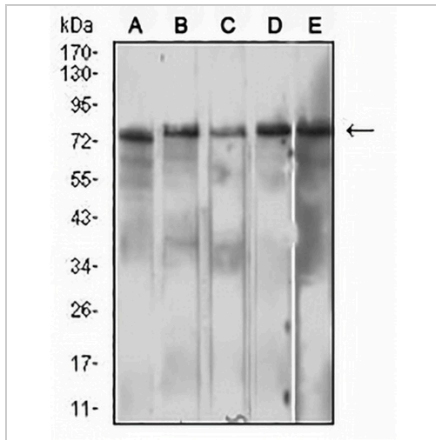
*Clone Number, Reactivity, Source/Host and Clonality can be found in the product name and Key Features section above.

DATASHEET

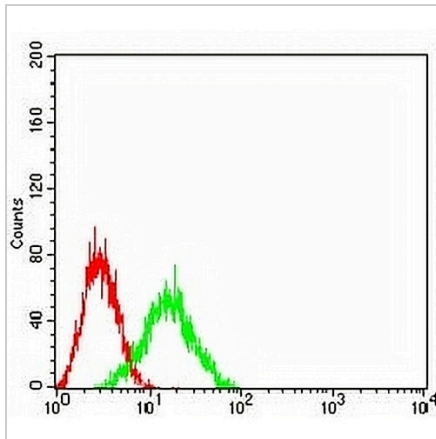
CD210b Mouse Monoclonal Antibody(C2764)

CAT. NO. AMA02376

DATA



Western blot analysis of CD210b expression in HeLa (A), Jurkat (B), Ramos (C), Raji (D), C6 (E) whole cell lysates. (Predicted band size: 37 kD; Observed band size: 74 kD)



Flow cytometric analysis of HL60 cells using Anti-CD210b Antibody (green) and negative control (red).

STORAGE

Store at 4°C short term. For long term storage, store at -20°C, avoiding freeze/thaw cycles.

NOTE

For Research Use Only. Not for diagnostic, therapeutics, prophylactic or in vivo use.