

DATASHEET

CD213a1 Mouse Monoclonal Antibody(C2765)

CAT. NO. AMA02377

KEY FEATURES

Target	CD213a1	Source / Host	Mouse
Reactivity	Human	Clonality	Monoclonal
Applications	WB, FC	Conjugation	Unconjugated
Form / Buffer	Mouse IgG1. Liquid in PBS, pH 7.3, 30% glycerol, and 0.01% sodium azide.	Storage	at-20°C

BACKGROUND

Binds with low affinity to interleukin-13 (IL13). Together with IL4RA can form a functional receptor for IL13. Also serves as an alternate accessory protein to the common cytokine receptor gamma chain for interleukin-4 (IL4) signaling, but cannot replace the function of IL2RG in allowing enhanced interleukin-2 (IL2) binding activity.

APPLICATION

To ensure optimal assay performance, AREX recommends conducting reagent titration tailored to each testing system for optimal detection results.

WB	1:500 - 1:1000
FC	1:100 - 1:200

*Results are sample-specific. Please refer to your local assay conditions and test parameters for reference.

PRODUCT OVERVIEW

Description	Mouse monoclonal to CD213a1
Specificity	Recognizes endogenous levels of CD213a1 protein
Antibody Type	Primary antibody
Immunogen	Recombinant fusion protein of human CD213a1 expressed in E. Coli
Purification	This antibody is purified through a protein G column.
Molecular Weight	Predicted: 49 kD; Observed: 49 kD
Form/Buffer	Mouse IgG1. Liquid in PBS, pH 7.3, 30% glycerol, and 0.01% sodium azide.
Alternative Names	IL13R; IL13RA; Interleukin-13 receptor subunit alpha-1; IL-13 receptor subunit alpha-1; IL-13R subunit alpha-1; IL-13R-alpha-1; IL-13RA1; Cancer/testis antigen 19; CT19; CD213a1
Gene Symbol	IL13RA1
Entrez Gene	3597(Human)
SwissProt	P78552(Human)

*AREX continuously optimizes our products. Webpage content may not reflect the latest updates. For inquiries, please contact info@arexbio.com or your local distributor.

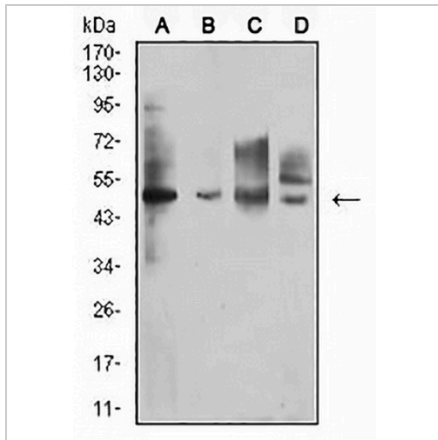
*Clone Number, Reactivity, Source/Host and Clonality can be found in the product name and Key Features section above.

DATASHEET

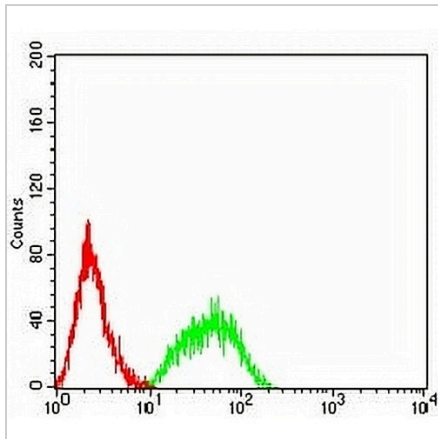
CD213a1 Mouse Monoclonal Antibody(C2765)

CAT. NO. AMA02377

DATA



Western blot analysis of CD213a1 expression in Raji (A), A431 (B), HT29 (C), A549 (D) whole cell lysates. (Predicted band size: 49 kD; Observed band size: 49 kD)



Flow cytometric analysis of HL60 cells using Anti-CD213a1 Antibody (green) and negative control (red).

STORAGE

Store at 4°C short term. For long term storage, store at -20°C, avoiding freeze/thaw cycles.

NOTE

For Research Use Only. Not for diagnostic, therapeutics, prophylactic or in vivo use.