

DATASHEET

IL-1R1 Mouse Monoclonal Antibody(C2767)

CAT. NO. AMA02379

KEY FEATURES

| | | | |
|---------------|--|---------------|--------------|
| Target | IL-1R1 | Source / Host | Mouse |
| Reactivity | Human | Clonality | Monoclonal |
| Applications | WB, FC | Conjugation | Unconjugated |
| Form / Buffer | Mouse IgG1. Liquid in PBS, pH 7.3, 30% glycerol, and 0.01% sodium azide. | Storage | at-20°C |

BACKGROUND

Receptor for IL1A, IL1B and IL1RN . After binding to interleukin-1 associates with the coreceptor IL1RAP to form the high affinity interleukin-1 receptor complex which mediates interleukin-1-dependent activation of NF-kappa-B, MAPK and other pathways. Signaling involves the recruitment of adapter molecules such as TOLLIP, MYD88, and IRAK1 or IRAK2 via the respective TIR domains of the receptor/coreceptor subunits. Binds ligands with comparable affinity and binding of antagonist IL1RN prevents association with IL1RAP to form a signaling complex. Involved in IL1B-mediated costimulation of IFNG production from T-helper 1 (Th1) cells .

APPLICATION

To ensure optimal assay performance, AREX recommends conducting reagent titration tailored to each testing system for optimal detection results.

| | |
|----|----------------|
| WB | 1:500 - 1:1000 |
| FC | 1:100 - 1:200 |

*Results are sample-specific. Please refer to your local assay conditions and test parameters for reference.

PRODUCT OVERVIEW

| | |
|-------------------|---|
| Description | Mouse monoclonal to IL-1R1 |
| Specificity | Recognizes endogenous levels of IL-1R1 protein |
| Antibody Type | Primary antibody |
| Immunogen | Recombinant fusion protein of human IL-1R1 expressed in E. Coli |
| Purification | This antibody is purified through a protein G column. |
| Molecular Weight | Predicted: 65 kD; Observed: 70 kD |
| Form/Buffer | Mouse IgG1. Liquid in PBS, pH 7.3, 30% glycerol, and 0.01% sodium azide. |
| Alternative Names | IL1R; IL1RA; IL1RT1; Interleukin-1 receptor type 1; IL-1R-1; IL-1RT-1; IL-1RT1; CD121 antigen-like family member A; Interleukin-1 receptor alpha; IL-1R-alpha; Interleukin-1 receptor type I; p80; CD121a |
| Gene Symbol | IL1R1 |
| Entrez Gene | 3554(Human) |
| SwissProt | P14778(Human) |

*AREX continuously optimizes our products. Webpage content may not reflect the latest updates. For inquiries, please contact info@arexbio.com or your local distributor.

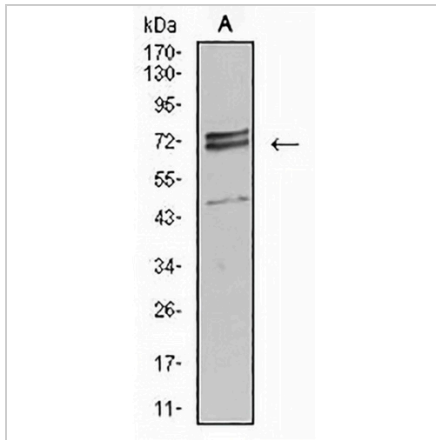
*Clone Number, Reactivity, Source/Host and Clonality can be found in the product name and Key Features section above.

DATASHEET

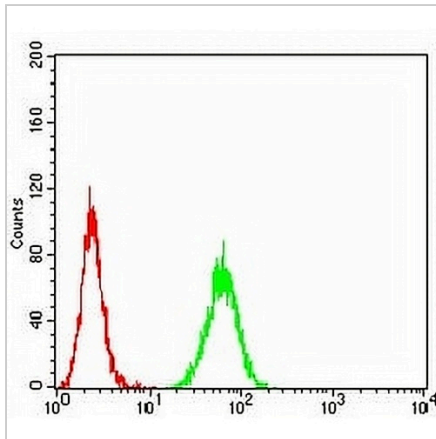
IL-1R1 Mouse Monoclonal Antibody(C2767)

CAT. NO. AMA02379

DATA



Western blot analysis of IL-1R1 expression in HeLa (A) whole cell lysates. (Predicted band size: 65 kD; Observed band size: 70 kD)



Flow cytometric analysis of HeLa cells using Anti-IL-1R1 Antibody (green) and negative control (red).

STORAGE

Store at 4°C short term. For long term storage, store at -20°C, avoiding freeze/thaw cycles.

NOTE

For Research Use Only. Not for diagnostic, therapeutics, prophylactic or in vivo use.