

## DATASHEET

# IL-1R2 Mouse Monoclonal Antibody(C2768)

CAT. NO. AMA02380

### KEY FEATURES

Target	IL-1R2	Source / Host	Mouse
Reactivity	Human	Clonality	Monoclonal
Applications	WB, FC	Conjugation	Unconjugated
Form / Buffer	Mouse IgG1. Liquid in PBS, pH 7.3, 30% glycerol, and 0.01% sodium azide.	Storage	at-20°C

### BACKGROUND

Non-signaling receptor for IL1A, IL1B and IL1RN. Reduces IL1B activities. Serves as a decoy receptor by competitive binding to IL1B and preventing its binding to IL1R1. Also modulates cellular response through non-signaling association with IL1RAP after binding to IL1B. IL1R2 (membrane and secreted forms) preferentially binds IL1B and poorly IL1A and IL1RN. The secreted IL1R2 recruits secreted IL1RAP with high affinity; this complex formation may be the dominant mechanism for neutralization of IL1B by secreted/soluble receptors.

### APPLICATION

To ensure optimal assay performance, AREX recommends conducting reagent titration tailored to each testing system for optimal detection results.

WB	1:500 - 1:1000
FC	1:100 - 1:200

\*Results are sample-specific. Please refer to your local assay conditions and test parameters for reference.

### PRODUCT OVERVIEW

Description	Mouse monoclonal to IL-1R2
Specificity	Recognizes endogenous levels of IL-1R2 protein
Antibody Type	Primary antibody
Immunogen	Recombinant fusion protein of human IL-1R2 expressed in HEK293
Purification	This antibody is purified through a protein G column.
Molecular Weight	Predicted: 45 kD; Observed: 50 kD
Form/Buffer	Mouse IgG1. Liquid in PBS, pH 7.3, 30% glycerol, and 0.01% sodium azide.
Alternative Names	IL1RB; Interleukin-1 receptor type 2; IL-1R-2; IL-1RT-2; IL-1RT2; CD121 antigen-like family member B; CDw121b; IL-1 type II receptor; Interleukin-1 receptor beta; IL-1R-beta; Interleukin-1 receptor type II; CD121b
Gene Symbol	IL1R2
Entrez Gene	7850(Human)
SwissProt	P27930(Human)

\*AREX continuously optimizes our products. Webpage content may not reflect the latest updates. For inquiries, please contact [info@arexbio.com](mailto:info@arexbio.com) or your local distributor.

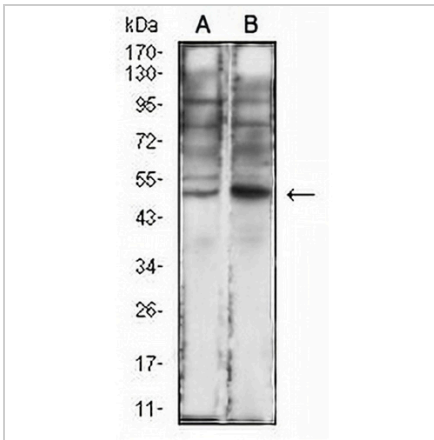
\*Clone Number, Reactivity, Source/Host and Clonality can be found in the product name and Key Features section above.

**DATASHEET**

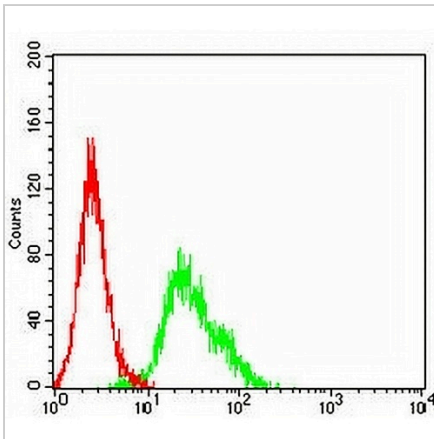
**IL-1R2 Mouse Monoclonal Antibody(C2768)**

CAT. NO. AMA02380

**DATA**



Western blot analysis of IL-1R2 expression in HeLa (A), MCF7 (B) whole cell lysates. (Predicted band size: 45 kD; Observed band size: 50 kD)



Flow cytometric analysis of THP1 cells using Anti-IL-1R2 Antibody (green) and negative control (red).

**STORAGE**

Store at 4°C short term. For long term storage, store at -20°C, avoiding freeze/thaw cycles.

**NOTE**

For Research Use Only. Not for diagnostic, therapeutics, prophylactic or in vivo use.