

DATASHEET

IL1RAPL1 Mouse Monoclonal Antibody(C2769)

CAT. NO. AMA02381

KEY FEATURES

Target	IL1RAPL1	Source / Host	Mouse
Reactivity	Human	Clonality	Monoclonal
Applications	WB, IF/ICC, FC	Conjugation	Unconjugated
Form / Buffer	Mouse IgG1. Liquid in PBS, pH 7.3, 30% glycerol, and 0.01% sodium azide.	Storage	at-20°C

BACKGROUND

May regulate secretion and presynaptic differentiation through inhibition of the activity of N-type voltage-gated calcium channel . May activate the MAP kinase JNK . Plays a role in neurite outgrowth . During dendritic spine formation can bidirectionally induce pre- and post-synaptic differentiation of neurons by trans-synaptically binding to PTPRD .

APPLICATION

To ensure optimal assay performance, AREX recommends conducting reagent titration tailored to each testing system for optimal detection results.

WB	1:500 - 1:1000
IF/ICC	1:100 - 1:500
FC	1:100 - 1:200

*Results are sample-specific. Please refer to your local assay conditions and test parameters for reference.

PRODUCT OVERVIEW

Description	Mouse monoclonal to IL1RAPL1
Specificity	Recognizes endogenous levels of IL1RAPL1 protein
Antibody Type	Primary antibody
Immunogen	Recombinant fusion protein of human IL1RAPL1 expressed in E. Coli
Purification	This antibody is purified through a protein G column.
Molecular Weight	Predicted: 80 kD; Observed: 83 kD
Form/Buffer	Mouse IgG1. Liquid in PBS, pH 7.3, 30% glycerol, and 0.01% sodium azide.
Alternative Names	OPHN4; Interleukin-1 receptor accessory protein-like 1; IL-1-RAPL-1; IL-1RAPL-1; IL1RAPL-1; Oligophrenin-4; Three immunoglobulin domain-containing IL-1 receptor-related 2; TIGIRR-2; X-linked interleukin-1 receptor accessory protein-like 1
Gene Symbol	IL1RAPL1
Entrez Gene	11141(Human)
SwissProt	Q9NZN1(Human)

*AREX continuously optimizes our products. Webpage content may not reflect the latest updates. For inquiries, please contact info@arexbio.com or your local distributor.

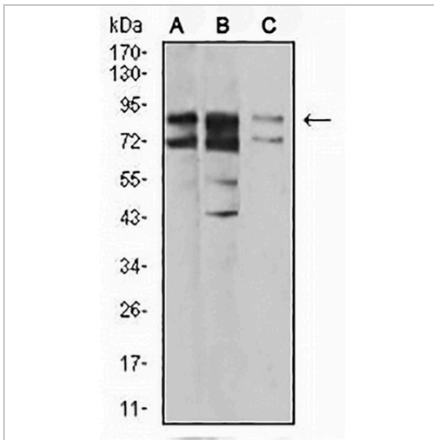
*Clone Number, Reactivity, Source/Host and Clonality can be found in the product name and Key Features section above.

DATASHEET

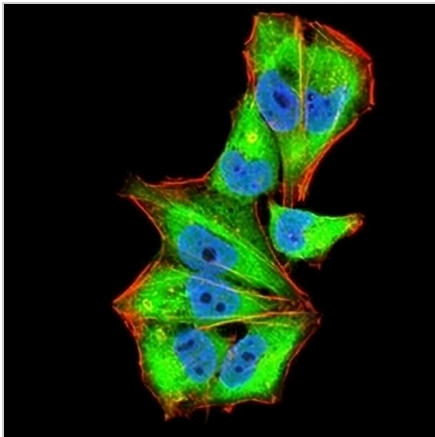
IL1RAPL1 Mouse Monoclonal Antibody(C2769)

CAT. NO. AMA02381

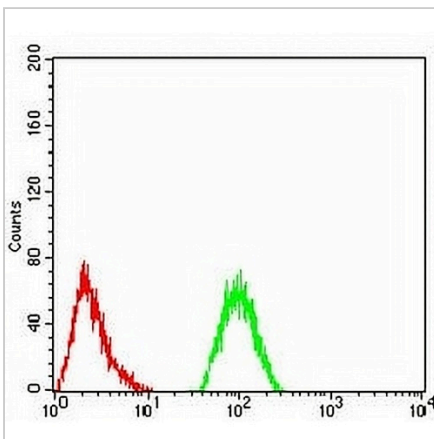
DATA



Western blot analysis of IL1RAPL1 expression in A431 (A), SKHep1 (B), HL7702 (C) whole cell lysates. (Predicted band size: 80 kD; Observed band size: 83 kD)



Immunofluorescent analysis of IL1RAPL1 staining in HeLa cells. Formalin-fixed cells were permeabilized with 0.1% Triton X-100 in TBS for 5-10 minutes and blocked with 3% BSA-PBS for 30 minutes at room temperature. Cells were probed with the primary antibody in 3% BSA-PBS and incubated overnight at 4 °C in a humidified chamber. Cells were washed with PBST and incubated with an AREX® Fluor 488 -conjugated secondary antibody (green) in PBS at room temperature in the dark. Phalloidin - AREX® Fluor 594 was used to stain Actin filaments (red). DAPI was used to stain the cell nuclei (blue).



Flow cytometric analysis of HeLa cells using Anti-IL1RAPL1 Antibody (green) and negative control (red).

STORAGE

Store at 4°C short term. For long term storage, store at -20°C, avoiding freeze/thaw cycles.

NOTE

For Research Use Only. Not for diagnostic, therapeutics, prophylactic or in vivo use.