

DATASHEET

Insulin Receptor Mouse Monoclonal Antibody(C2776)

CAT. NO. AMA02388

KEY FEATURES

Target	Insulin Receptor	Source / Host	Mouse
Reactivity	Human, Mouse, Monkey	Clonality	Monoclonal
Applications	WB, IF/ICC, FC	Conjugation	Unconjugated
Form / Buffer	Mouse IgG2a. Liquid in PBS, pH 7.3, 30% glycerol, and 0.01% sodium azide.	Storage	at-20°C

BACKGROUND

Receptor tyrosine kinase which mediates the pleiotropic actions of insulin. Binding of insulin leads to phosphorylation of several intracellular substrates, including, insulin receptor substrates (IRS1, 2, 3, 4), SHC, GAB1, CBL and other signaling intermediates. Each of these phosphorylated proteins serve as docking proteins for other signaling proteins that contain Src-homology-2 domains (SH2 domain) that specifically recognize different phosphotyrosine residues, including the p85 regulatory subunit of PI3K and SHP2.

APPLICATION

To ensure optimal assay performance, AREX recommends conducting reagent titration tailored to each testing system for optimal detection results.

WB	1:500 - 1:1000
IF/ICC	1:50 - 1:100
FC	1:100 - 1:200

*Results are sample-specific. Please refer to your local assay conditions and test parameters for reference.

PRODUCT OVERVIEW

Description	Mouse monoclonal to Insulin Receptor
Specificity	Recognizes endogenous levels of Insulin Receptor protein
Antibody Type	Primary antibody
Immunogen	Recombinant fusion protein of human Insulin Receptor expressed in E. Coli
Purification	This antibody is purified through a protein G column.
Molecular Weight	Predicted: 156 kD; Observed: 95 kD kD
Form/Buffer	Mouse IgG2a. Liquid in PBS, pH 7.3, 30% glycerol, and 0.01% sodium azide.
Alternative Names	Insulin receptor; IR; CD220
Gene Symbol	INSR
Entrez Gene	3643(Human)
SwissProt	P06213(Human); P15208(Mouse)

*AREX continuously optimizes our products. Webpage content may not reflect the latest updates. For inquiries, please contact info@arexbio.com or your local distributor.

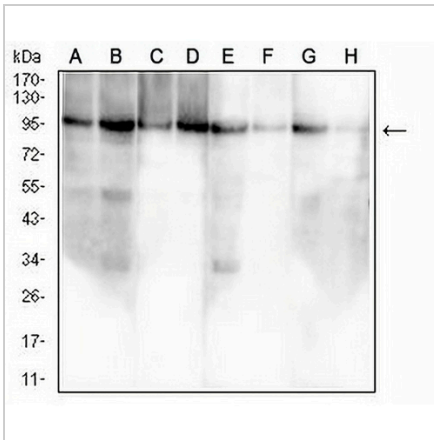
*Clone Number, Reactivity, Source/Host and Clonality can be found in the product name and Key Features section above.

DATASHEET

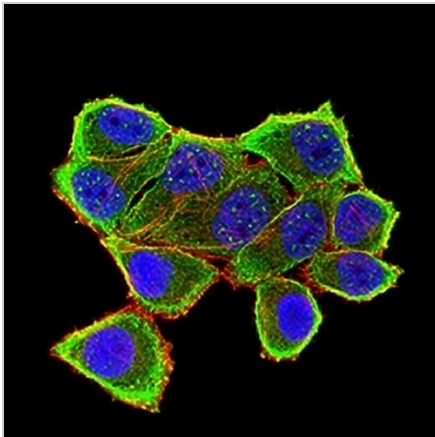
Insulin Receptor Mouse Monoclonal Antibody(C2776)

CAT. NO. AMA02388

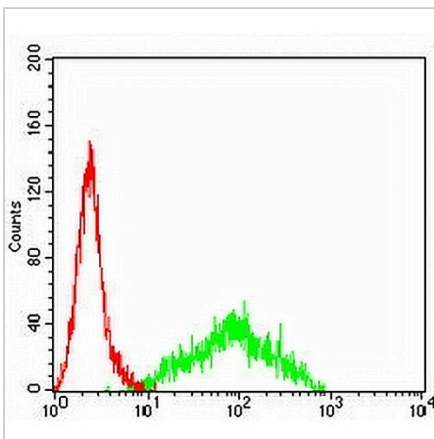
DATA



Western blot analysis of Insulin Receptor expression in HepG2 (A), HEK293 (B), Jurkat (C), Hela (D), THP1 (E), NIH/3T3 (F), COS7 (G), PC3 (H) whole cell lysates. (Predicted band size: 156 kD; Observed band size: 95 kD)



Immunofluorescent analysis of Insulin Receptor staining in HeLa cells. Formalin-fixed cells were permeabilized with 0.1% Triton X-100 in TBS for 5-10 minutes and blocked with 3% BSA-PBS for 30 minutes at room temperature. Cells were probed with the primary antibody in 3% BSA-PBS and incubated overnight at 4 °C in a humidified chamber. Cells were washed with PBST and incubated with an AREX® Fluor 488 -conjugated secondary antibody (green) in PBS at room temperature in the dark. Phalloidin - AREX® Fluor 594 was used to stain Actin filaments (red). DAPI was used to stain the cell nuclei (blue).



Flow cytometric analysis of THP1 cells using Anti-Insulin Receptor Antibody (green) and negative control (red).

STORAGE

Store at 4°C short term. For long term storage, store at -20°C, avoiding freeze/thaw cycles.

NOTE

For Research Use Only. Not for diagnostic, therapeutics, prophylactic or in vivo use.