

DATASHEET

CD339 Mouse Monoclonal Antibody(C2784)

CAT. NO. AMA02396

KEY FEATURES

Target	CD339	Source / Host	Mouse
Reactivity	Human	Clonality	Monoclonal
Applications	WB, FC	Conjugation	Unconjugated
Form / Buffer	Mouse IgG1. Liquid in PBS, pH 7.3, 30% glycerol, and 0.01% sodium azide.	Storage	at-20°C

BACKGROUND

Ligand for multiple Notch receptors and involved in the mediation of Notch signaling . May be involved in cell-fate decisions during hematopoiesis . Seems to be involved in early and late stages of mammalian cardiovascular development. Inhibits myoblast differentiation . Enhances fibroblast growth factor-induced angiogenesis (in vitro).

APPLICATION

To ensure optimal assay performance, AREX recommends conducting reagent titration tailored to each testing system for optimal detection results.

WB	1:500 - 1:1000
FC	1:100 - 1:200

*Results are sample-specific. Please refer to your local assay conditions and test parameters for reference.

PRODUCT OVERVIEW

Description	Mouse monoclonal to CD339
Specificity	Recognizes endogenous levels of CD339 protein
Antibody Type	Primary antibody
Immunogen	Recombinant fusion protein of human CD339 expressed in E. Coli
Purification	This antibody is purified through a protein G column.
Molecular Weight	Predicted: 134 kD; Observed: 130 kD kD
Form/Buffer	Mouse IgG1. Liquid in PBS, pH 7.3, 30% glycerol, and 0.01% sodium azide.
Alternative Names	JAGL1; Protein jagged-1; Jagged1; hj1; CD339
Gene Symbol	JAG1
Entrez Gene	182(Human)
SwissProt	P78504(Human)

*AREX continuously optimizes our products. Webpage content may not reflect the latest updates. For inquiries, please contact info@arexbio.com or your local distributor.

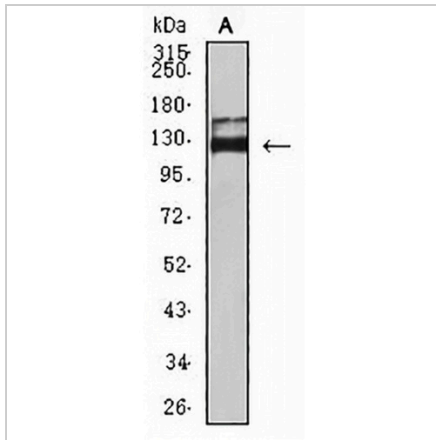
*Clone Number, Reactivity, Source/Host and Clonality can be found in the product name and Key Features section above.

DATASHEET

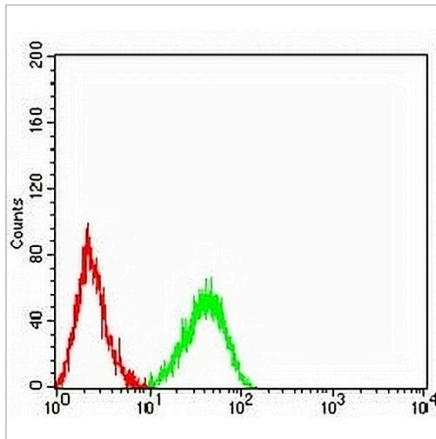
CD339 Mouse Monoclonal Antibody(C2784)

CAT. NO. AMA02396

DATA



Western blot analysis of CD339 expression in HeLa (A) whole cell lysates. (Predicted band size: 134 kD; Observed band size: 130 kD)



Flow cytometric analysis of HL60 cells using Anti-CD339 Antibody (green) and negative control (red).

STORAGE

Store at 4°C short term. For long term storage, store at -20°C, avoiding freeze/thaw cycles.

NOTE

For Research Use Only. Not for diagnostic, therapeutics, prophylactic or in vivo use.