

DATASHEET

KBTBD8 Mouse Monoclonal Antibody(C2789)

CAT. NO. AMA02401

KEY FEATURES

Target	KBTBD8	Source / Host	Mouse
Reactivity	Human	Clonality	Monoclonal
Applications	WB, FC	Conjugation	Unconjugated
Form / Buffer	Mouse IgG1. Liquid in PBS, pH 7.3, 30% glycerol, and 0.01% sodium azide.	Storage	at-20°C

BACKGROUND

Substrate-specific adapter of a BCR (BTB-CUL3-RBX1) E3 ubiquitin ligase complex that acts as a regulator of neural crest specification E3 ubiquitin ligase complex that acts as a regulator of neural crest specification . The BCR(KBTBD8) complex acts by mediating monoubiquitination of NOLC1 and TCOF1: monoubiquitination promotes the formation of a NOLC1-TCOF1 complex that acts as a platform to connect RNA polymerase I with enzymes responsible for ribosomal processing and modification, leading to remodel the translational program of differentiating cells in favor of neural crest specification .

APPLICATION

To ensure optimal assay performance, AREX recommends conducting reagent titration tailored to each testing system for optimal detection results.

WB	1:500 - 1:1000
FC	1:100 - 1:200

*Results are sample-specific. Please refer to your local assay conditions and test parameters for reference.

PRODUCT OVERVIEW

Description	Mouse monoclonal to KBTBD8
Specificity	Recognizes endogenous levels of KBTBD8 protein
Antibody Type	Primary antibody
Immunogen	Recombinant fusion protein of human KBTBD8 expressed in E. Coli
Purification	This antibody is purified through a protein G column.
Molecular Weight	Predicted: 69 kD; Observed: 69 kD
Form/Buffer	Mouse IgG1. Liquid in PBS, pH 7.3, 30% glycerol, and 0.01% sodium azide.
Alternative Names	KIAA1842; TAKRP; Kelch repeat and BTB domain-containing protein 8; T-cell activation kelch repeat protein; TA-KRP
Gene Symbol	KBTBD8
Entrez Gene	84541(Human)
SwissProt	Q8NFY9(Human)

*AREX continuously optimizes our products. Webpage content may not reflect the latest updates. For inquiries, please contact info@arexbio.com or your local distributor.

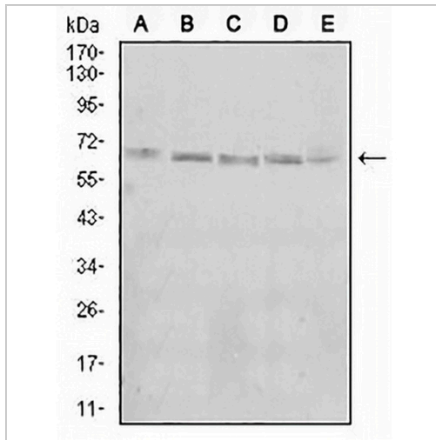
*Clone Number, Reactivity, Source/Host and Clonality can be found in the product name and Key Features section above.

DATASHEET

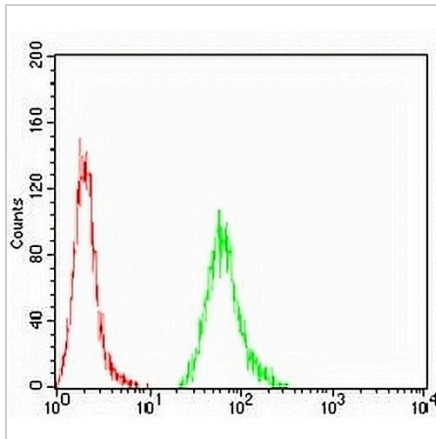
KBTBD8 Mouse Monoclonal Antibody(C2789)

CAT. NO. AMA02401

DATA



Western blot analysis of KBTBD8 expression in A431 (A), Jurkat (B), HeLa (C), K562 (D), HEK293 (E) whole cell lysates. (Predicted band size: 69 kD; Observed band size: 69 kD)



Flow cytometric analysis of A431 cells using Anti-KBTBD8 Antibody (green) and negative control (red).

STORAGE

Store at 4°C short term. For long term storage, store at -20°C, avoiding freeze/thaw cycles.

NOTE

For Research Use Only. Not for diagnostic, therapeutics, prophylactic or in vivo use.