

DATASHEET

KDM6A Mouse Monoclonal Antibody(C2794)

CAT. NO. AMA02406

KEY FEATURES

Target	KDM6A	Source / Host	Mouse
Reactivity	Human, Rat	Clonality	Monoclonal
Applications	WB	Conjugation	Unconjugated
Form / Buffer	Mouse IgG2a. Liquid in PBS, pH 7.3, 30% glycerol, and 0.01% sodium azide.	Storage	at-20°C

BACKGROUND

Histone demethylase that specifically demethylates 'Lys-27' of histone H3, thereby playing a central role in histone code . Demethylates trimethylated and dimethylated but not monomethylated H3 'Lys-27' . Plays a central role in regulation of posterior development, by regulating HOX gene expression . Demethylation of 'Lys-27' of histone H3 is concomitant with methylation of 'Lys-4' of histone H3, and regulates the recruitment of the PRC1 complex and monoubiquitination of histone H2A . Plays a demethylase-independent role in chromatin remodeling to regulate T-box family member-dependent gene expression .

APPLICATION

To ensure optimal assay performance, AREX recommends conducting reagent titration tailored to each testing system for optimal detection results.

WB	1:500 - 1:1000
----	----------------

*Results are sample-specific. Please refer to your local assay conditions and test parameters for reference.

PRODUCT OVERVIEW

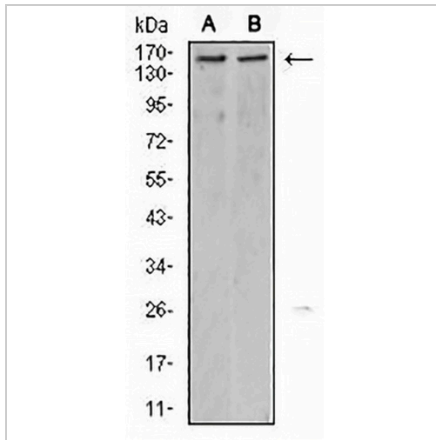
Description	Mouse monoclonal to KDM6A
Specificity	Recognizes endogenous levels of KDM6A protein
Antibody Type	Primary antibody
Immunogen	Recombinant fusion protein of human KDM6A expressed in E. Coli
Purification	This antibody is purified through a protein G column.
Molecular Weight	Predicted: 154 kD; Observed: 155 kD kD
Form/Buffer	Mouse IgG2a. Liquid in PBS, pH 7.3, 30% glycerol, and 0.01% sodium azide.
Alternative Names	UTX; Lysine-specific, demethylase 6A; Histone demethylase UTX; Ubiquitously-transcribed TPR protein on the X chromosome; Ubiquitously-transcribed X chromosome tetratricopeptide repeat protein
Gene Symbol	KDM6A
Entrez Gene	7403(Human)
SwissProt	O15550(Human)

*AREX continuously optimizes our products. Webpage content may not reflect the latest updates. For inquiries, please contact info@arexbio.com or your local distributor.

*Clone Number, Reactivity, Source/Host and Clonality can be found in the product name and Key Features section above.

DATASHEET**KDM6A Mouse Monoclonal Antibody(C2794)**

CAT. NO. AMA02406

DATA

Western blot analysis of KDM6A expression in HepG2 (A), C6 (B) whole cell lysates. (Predicted band size: 154 kD; Observed band size: 155 kD)

STORAGE

Store at 4°C short term. For long term storage, store at -20°C, avoiding freeze/thaw cycles.

NOTE

For Research Use Only. Not for diagnostic, therapeutics, prophylactic or in vivo use.