

DATASHEET

LKLF Mouse Monoclonal Antibody(C2798)

CAT. NO. AMA02410

KEY FEATURES

Target	LKLF	Source / Host	Mouse
Reactivity	Human, Mouse	Clonality	Monoclonal
Applications	WB	Conjugation	Unconjugated
Form / Buffer	Mouse IgG1. Liquid in PBS, pH 7.3, 30% glycerol, and 0.01% sodium azide.	Storage	at-20°C

BACKGROUND

Transcription factor that binds to the CACCC box in the promoter of target genes such as HBB/beta globin or NOV and activates their transcription . Might be involved in transcriptional regulation by modulating the binding of the RARA nuclear receptor to RARE DNA elements .

APPLICATION

To ensure optimal assay performance, AREX recommends conducting reagent titration tailored to each testing system for optimal detection results.

WB	1:500 - 1:1000
----	----------------

*Results are sample-specific. Please refer to your local assay conditions and test parameters for reference.

PRODUCT OVERVIEW

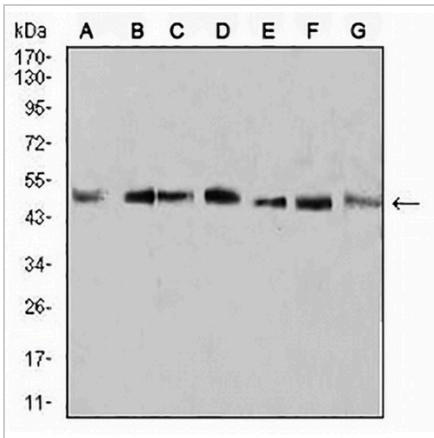
Description	Mouse monoclonal to LKLF
Specificity	Recognizes endogenous levels of LKLF protein
Antibody Type	Primary antibody
Immunogen	Recombinant fusion protein of human LKLF expressed in E. Coli
Purification	This antibody is purified through a protein G column.
Molecular Weight	Predicted: 37 kD; Observed: 50 kD kD
Form/Buffer	Mouse IgG1. Liquid in PBS, pH 7.3, 30% glycerol, and 0.01% sodium azide.
Alternative Names	LKLF; Krueppel-like factor 2; Lung krueppel-like factor
Gene Symbol	KLF2
Entrez Gene	10365(Human); 306330(Rat)
SwissProt	Q9Y5W3(Human); Q60843(Mouse)

*AREX continuously optimizes our products. Webpage content may not reflect the latest updates. For inquiries, please contact info@arexbio.com or your local distributor.

*Clone Number, Reactivity, Source/Host and Clonality can be found in the product name and Key Features section above.

DATASHEET**LKLF Mouse Monoclonal Antibody(C2798)**

CAT. NO. AMA02410

DATA

Western blot analysis of LKLF expression in A431 (A), U937 (B), NIH/3T3 (C), Raw264.7 (D), SPCA1 (E), SKMES1 (F), MOLT4 (G) whole cell lysates. (Predicted band size: 37 kD; Observed band size: 50 kD kD)

STORAGE

Store at 4°C short term. For long term storage, store at -20°C, avoiding freeze/thaw cycles.

NOTE

For Research Use Only. Not for diagnostic, therapeutics, prophylactic or in vivo use.