

## DATASHEET

# Cytokeratin 10 Mouse Monoclonal Antibody(C2802)

CAT. NO. AMA02414

### KEY FEATURES

Target	Cytokeratin 10	Source / Host	Mouse
Reactivity	Human	Clonality	Monoclonal
Applications	WB, IHC, IF/ICC, FC	Conjugation	Unconjugated
Form / Buffer	Mouse IgG1. Liquid in PBS, pH 7.3, 30% glycerol, and 0.01% sodium azide.	Storage	at-20°C

### BACKGROUND

Plays a role in the establishment of the epidermal barrier on plantar skin . Involved in the maintenance of cell layer development and keratin filament bundles in suprabasal cells of the epithelium .

### APPLICATION

To ensure optimal assay performance, AREX recommends conducting reagent titration tailored to each testing system for optimal detection results.

WB	1:500 - 1:1000
IHC	1:100 - 1:500
IF/ICC	1:100 - 1:500
FC	1:100 - 1:200

\*Results are sample-specific. Please refer to your local assay conditions and test parameters for reference.

### PRODUCT OVERVIEW

Description	Mouse monoclonal to Cytokeratin 10
Specificity	Recognizes endogenous levels of Cytokeratin 10 protein
Antibody Type	Primary antibody
Immunogen	Recombinant fusion protein of human Cytokeratin 10 expressed in E. Coli
Purification	This antibody is purified through a protein G column.
Molecular Weight	Predicted: 59 kD; Observed: 59 kD
Form/Buffer	Mouse IgG1. Liquid in PBS, pH 7.3, 30% glycerol, and 0.01% sodium azide.
Alternative Names	KPP; Keratin, type I cytoskeletal 10; Cytokeratin-10; CK-10; Keratin-10; K10
Gene Symbol	KRT10
Entrez Gene	3858(Human)
SwissProt	P13645(Human)

\*AREX continuously optimizes our products. Webpage content may not reflect the latest updates. For inquiries, please contact [info@arexbio.com](mailto:info@arexbio.com) or your local distributor.

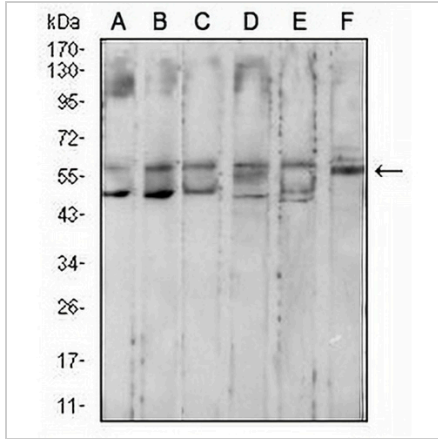
\*Clone Number, Reactivity, Source/Host and Clonality can be found in the product name and Key Features section above.

**DATASHEET**

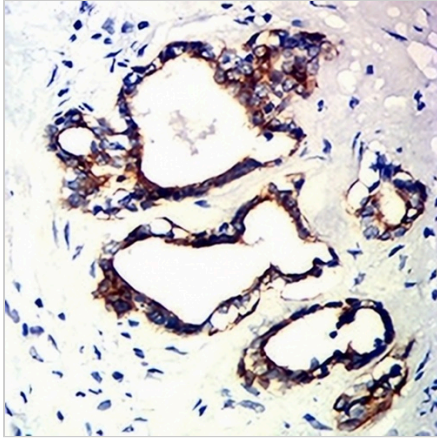
**Cytokeratin 10 Mouse Monoclonal Antibody(C2802)**

CAT. NO. AMA02414

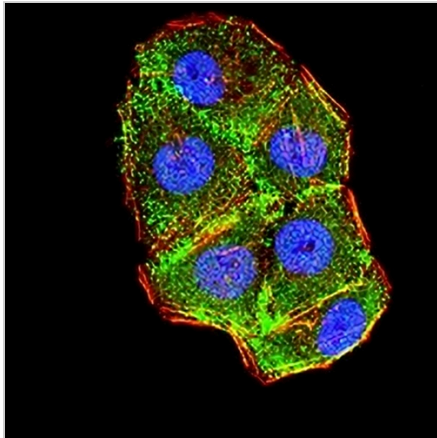
**DATA**



Western blot analysis of Cytokeratin 10 expression in MCF7 (A), HeLa (B), HepG2 (C), T47D (D), HT29 (E), A549 (F) whole cell lysates. (Predicted band size: 59 kD; Observed band size: 59 kD kD)



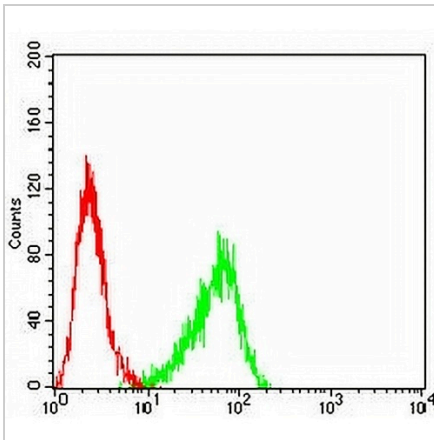
Immunohistochemical analysis of Cytokeratin 10 staining in human prostate cancer formalin fixed paraffin embedded tissue section. The section was pre-treated using heat mediated antigen retrieval with sodium citrate buffer (pH 6.0). The section was then incubated with the antibody at room temperature and detected using an HRP conjugated compact polymer system. DAB was used as the chromogen. The section was then counterstained with haematoxylin and mounted with DPX.



Immunofluorescent analysis of Cytokeratin 10 staining in HeLa cells. Formalin-fixed cells were permeabilized with 0.1% Triton X-100 in TBS for 5-10 minutes and blocked with 3% BSA-PBS for 30 minutes at room temperature. Cells were probed with the primary antibody in 3% BSA-PBS and incubated overnight at 4 °C in a hidified chamber. Cells were washed with PBST and incubated with an AREX® Fluor 488 -conjugated secondary antibody (green) in PBS at room temperature in the dark. Phalloidin - AREX® Fluor 594 was used to stain Actin filaments (red). DAPI was used to stain the cell nuclei (blue).

**DATASHEET****Cytokeratin 10 Mouse Monoclonal Antibody(C2802)**

CAT. NO. AMA02414

**DATA (CONTINUED)**

Flow cytometric analysis of A431 cells using Anti-Cytokeratin 10 Antibody (green) and negative control (red).

**STORAGE**

Store at 4°C short term. For long term storage, store at -20°C, avoiding freeze/thaw cycles.

**NOTE**

For Research Use Only. Not for diagnostic, therapeutics, prophylactic or in vivo use.