

DATASHEET

Cytokeratin 13 Mouse Monoclonal Antibody(C2803)

CAT. NO. AMA02415

KEY FEATURES

Target	Cytokeratin 13	Source / Host	Mouse
Reactivity	Human	Clonality	Monoclonal
Applications	WB, IHC, FC	Conjugation	Unconjugated
Form / Buffer	Mouse IgG1. Liquid in PBS, pH 7.3, 30% glycerol, and 0.01% sodium azide.	Storage	at-20°C

BACKGROUND

Type 1 keratin (Probable). Maintains postnatal tongue mucosal cell homeostasis and tissue organization in response to mechanical stress, potentially via regulation of the G1/S phase cyclins CCNE1 and CCNE2 .

APPLICATION

To ensure optimal assay performance, AREX recommends conducting reagent titration tailored to each testing system for optimal detection results.

WB	1:500 - 1:1000
IHC	1:100 - 1:500
FC	1:100 - 1:200

*Results are sample-specific. Please refer to your local assay conditions and test parameters for reference.

PRODUCT OVERVIEW

Description	Mouse monoclonal to Cytokeratin 13
Specificity	Recognizes endogenous levels of Cytokeratin 13 protein
Antibody Type	Primary antibody
Immunogen	Recombinant fusion protein of human Cytokeratin 13 expressed in E. Coli
Purification	This antibody is purified through a protein G column.
Molecular Weight	Predicted: 50 kD; Observed: 50 kD
Form/Buffer	Mouse IgG1. Liquid in PBS, pH 7.3, 30% glycerol, and 0.01% sodium azide.
Alternative Names	Keratin, type I cytoskeletal 13; Cytokeratin-13; CK-13; Keratin-13; K13
Gene Symbol	KRT13
Entrez Gene	3860(Human)
SwissProt	P13646(Human)

*AREX continuously optimizes our products. Webpage content may not reflect the latest updates. For inquiries, please contact info@arexbio.com or your local distributor.

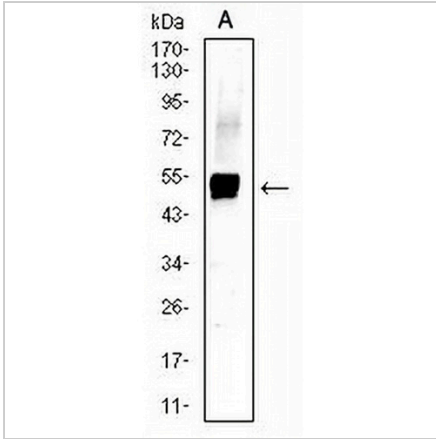
*Clone Number, Reactivity, Source/Host and Clonality can be found in the product name and Key Features section above.

DATASHEET

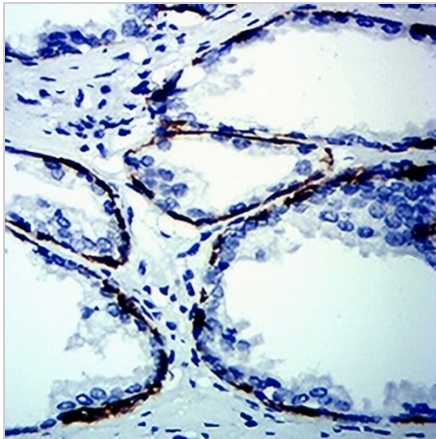
Cytokeratin 13 Mouse Monoclonal Antibody(C2803)

CAT. NO. AMA02415

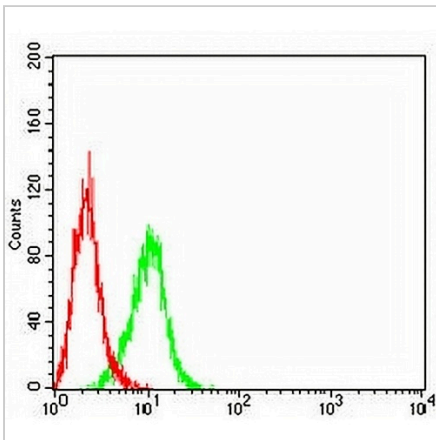
DATA



Western blot analysis of Cytokeratin 13 expression in A431 (A) whole cell lysates. (Predicted band size: 50 kD; Observed band size: 50 kD)



Immunohistochemical analysis of Cytokeratin 13 staining in human prostate cancer formalin fixed paraffin embedded tissue section. The section was pre-treated using heat mediated antigen retrieval with sodium citrate buffer (pH 6.0). The section was then incubated with the antibody at room temperature and detected using an HRP conjugated compact polymer system. DAB was used as the chromogen. The section was then counterstained with haematoxylin and mounted with DPX.



Flow cytometric analysis of A431 cells using Anti-Cytokeratin 13 Antibody (green) and negative control (red).

STORAGE

Store at 4°C short term. For long term storage, store at -20°C, avoiding freeze/thaw cycles.

NOTE

For Research Use Only. Not for diagnostic, therapeutics, prophylactic or in vivo use.