

**DATASHEET**

**CD223 Mouse Monoclonal Antibody(C2812)**

CAT. NO. AMA02424

**KEY FEATURES**

Target	CD223	Source / Host	Mouse
Reactivity	Human	Clonality	Monoclonal
Applications	WB, FC	Conjugation	Unconjugated
Form / Buffer	Mouse IgG1. Liquid in PBS, pH 7.3, 30% glycerol, and 0.01% sodium azide.	Storage	at-20°C

**BACKGROUND**

Inhibitory receptor on antigen activated T-cells . Delivers inhibitory signals upon binding to ligands, such as MHC class II, its main ligand present at the surface of antigen-presenting cells (APCs), and FGL1, which is secreted by hepatocytes and certain types of tumor cells . Ligand-binding initiates a signaling that inhibits the T-cell receptor (TCR) in the immunological synapse, preventing T-cell activation . Mechanistically, ligand-binding promotes (1) ubiquitination of the KIEELE motif, unleashing the RRFSALE motif from the membrane and (2) leading to the formation of condensates with the TCR component CD3E, thereby disrupting the association between CD3E and LCK and preventing TCR activation . May inhibit antigen-specific T-cell activation in synergy with PDCD1/PD-1 .

**APPLICATION**

To ensure optimal assay performance, AREX recommends conducting reagent titration tailored to each testing system for optimal detection results.

WB	1:500 - 1:1000
FC	1:100 - 1:200

\*Results are sample-specific. Please refer to your local assay conditions and test parameters for reference.

**PRODUCT OVERVIEW**

Description	Mouse monoclonal to CD223
Specificity	Recognizes endogenous levels of CD223 protein
Antibody Type	Primary antibody
Immunogen	Recombinant fusion protein of human CD223 expressed in E. Coli
Purification	This antibody is purified through a protein G column.
Molecular Weight	Predicted: 57 kD; Observed: 95 kD kD
Form/Buffer	Mouse IgG1. Liquid in PBS, pH 7.3, 30% glycerol, and 0.01% sodium azide.
Alternative Names	FDC; Lymphocyte activation gene 3 protein; LAG-3; Protein FDC; CD223
Gene Symbol	LAG3
Entrez Gene	3902(Human)
SwissProt	P18627(Human)

\*AREX continuously optimizes our products. Webpage content may not reflect the latest updates. For inquiries, please contact [info@arexbio.com](mailto:info@arexbio.com) or your local distributor.

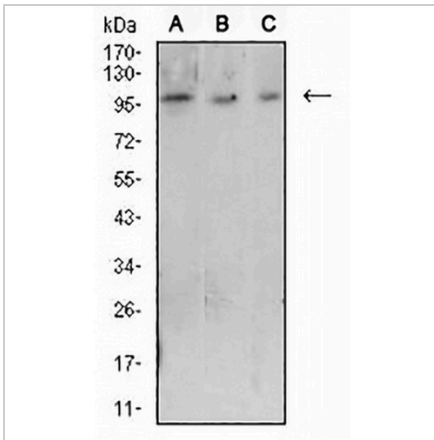
\*Clone Number, Reactivity, Source/Host and Clonality can be found in the product name and Key Features section above.

**DATASHEET**

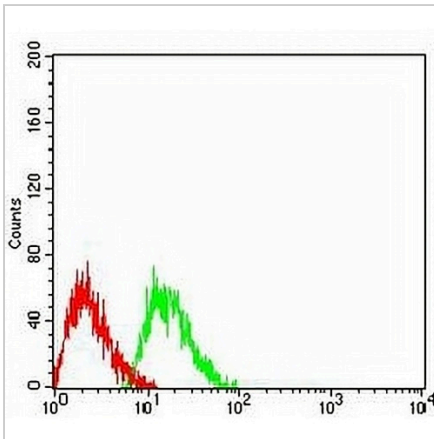
**CD223 Mouse Monoclonal Antibody(C2812)**

CAT. NO. AMA02424

**DATA**



Western blot analysis of CD223 expression in Raji (A), Ramos (B), MOLT4 (C) whole cell lysates. (Predicted band size: 57 kD; Observed band size: 95 kD)



Flow cytometric analysis of Jurkat cells using Anti-CD223 Antibody (green) and negative control (red).

**STORAGE**

Store at 4°C short term. For long term storage, store at -20°C, avoiding freeze/thaw cycles.

**NOTE**

For Research Use Only. Not for diagnostic, therapeutics, prophylactic or in vivo use.