

DATASHEET

CD107b Mouse Monoclonal Antibody(C2814)

CAT. NO. AMA02426

KEY FEATURES

Target	CD107b	Source / Host	Mouse
Reactivity	Human, Mouse, Rat	Clonality	Monoclonal
Applications	WB, IHC, FC	Conjugation	Unconjugated
Form / Buffer	Mouse IgG2b. Liquid in PBS, pH 7.3, 30% glycerol, and 0.01% sodium azide.	Storage	at-20°C

BACKGROUND

Lysosomal membrane glycoprotein which plays an important role in lysosome biogenesis, lysosomal pH regulation and autophagy . Acts as an important regulator of lysosomal lumen pH regulation by acting as a direct inhibitor of the proton channel TMEM175, facilitating lysosomal acidification for optimal hydrolase activity . Plays an important role in chaperone-mediated autophagy, a process that mediates lysosomal degradation of proteins in response to various stresses and as part of the normal turnover of proteins with a long biological half-live . Functions by binding target proteins, such as GAPDH, GPX4, NLRP3 and MLLT11, and targeting them for lysosomal degradation .

APPLICATION

To ensure optimal assay performance, AREX recommends conducting reagent titration tailored to each testing system for optimal detection results.

WB	1:500 - 1:1000
IHC	1:100 - 1:500
FC	1:100 - 1:200

*Results are sample-specific. Please refer to your local assay conditions and test parameters for reference.

PRODUCT OVERVIEW

Description	Mouse monoclonal to CD107b
Specificity	Recognizes endogenous levels of CD107b protein
Antibody Type	Primary antibody
Immunogen	Recombinant fusion protein of human CD107b expressed in E. Coli
Purification	This antibody is purified through a protein G column.
Molecular Weight	Predicted: 45 kD; Observed: 44 kD
Form/Buffer	Mouse IgG2b. Liquid in PBS, pH 7.3, 30% glycerol, and 0.01% sodium azide.
Alternative Names	Lysosome-associated membrane glycoprotein 2; LAMP-2; Lysosome-associated membrane protein 2; CD107 antigen-like family member B; CD107b
Gene Symbol	LAMP2
Entrez Gene	3920(Human); 16784(Mouse)
SwissProt	P13473(Human); P17047(Mouse); P17046(Rat)

*AREX continuously optimizes our products. Webpage content may not reflect the latest updates. For inquiries, please contact info@arexbio.com or your local distributor.

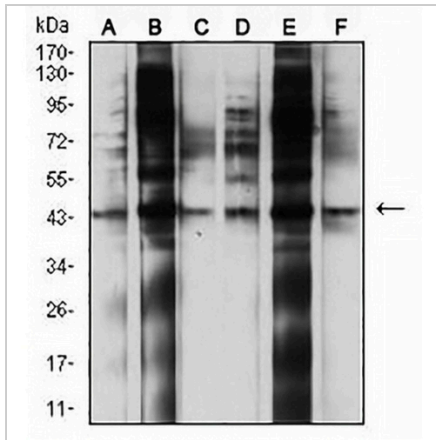
*Clone Number, Reactivity, Source/Host and Clonality can be found in the product name and Key Features section above.

DATASHEET

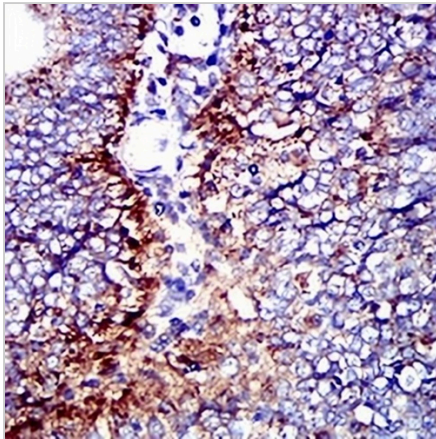
CD107b Mouse Monoclonal Antibody(C2814)

CAT. NO. AMA02426

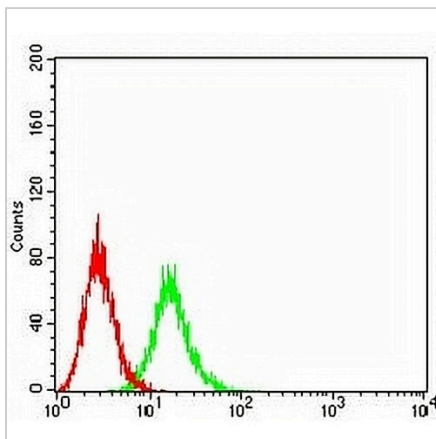
DATA



Western blot analysis of CD107b expression in U937 (A), HepG2 (B), RAW264.7 (C), NIH3T3 (D), C6 (E), T47D (F) whole cell lysates. (Predicted band size: 45 kD; Observed band size: 44 kD)



Immunohistochemical analysis of CD107b staining in human endometrial cancer formalin fixed paraffin embedded tissue section. The section was pre-treated using heat mediated antigen retrieval with sodium citrate buffer (pH 6.0). The section was then incubated with the antibody at room temperature and detected using an HRP conjugated compact polymer system. DAB was used as the chromogen. The section was then counterstained with haematoxylin and mounted with DPX.



Flow cytometric analysis of Ramos cells using Anti-CD107b Antibody (green) and negative control (red).

STORAGE

Store at 4°C short term. For long term storage, store at -20°C, avoiding freeze/thaw cycles.

NOTE

For Research Use Only. Not for diagnostic, therapeutics, prophylactic or in vivo use.