

## DATASHEET

# TCF1 alpha Mouse Monoclonal Antibody(C2815)

CAT. NO. AMA02427

### KEY FEATURES

|               |  |               |              |
|---------------|--|---------------|--------------|
| Target        | TCF1 alpha   | Source / Host | Mouse        |
| Reactivity    | Human  | Clonality     | Monoclonal   |
| Applications  | WB, IHC  | Conjugation   | Unconjugated |
| Form / Buffer | Mouse IgG1. Liquid in PBS, pH 7.3, 30% glycerol, and 0.01% sodium azide. | Storage       | at-20°C      |

### BACKGROUND

Transcription factor that binds DNA in a sequence-specific manner . Participates in the Wnt signaling pathway . Activates transcription of target genes in the presence of CTNNB1 and EP300 . PIAG antagonizes both Wnt-dependent and Wnt-independent activation by LEF1 . TLE1, TLE2, TLE3 and TLE4 repress transactivation mediated by LEF1 and CTNNB1 . Regulates T-cell receptor alpha enhancer function . Required for IL17A expressing gamma-delta T-cell maturation and development, via binding to regulator loci of BLK to modulate expression . Acts as a positive regulator of odontoblast differentiation during mesenchymal tooth germ formation, expression is repressed during the bell stage by MSX1-mediated inhibition of CTNNB1 signaling .

### APPLICATION

To ensure optimal assay performance, AREX recommends conducting reagent titration tailored to each testing system for optimal detection results.

|     |                |
|-----|----------------|
| WB  | 1:500 - 1:1000 |
| IHC | 1:100 - 1:500  |

\*Results are sample-specific. Please refer to your local assay conditions and test parameters for reference.

### PRODUCT OVERVIEW

|                   |  |
|-------------------|--|
| Description       | Mouse monoclonal to TCF1 alpha   |
| Specificity       | Recognizes endogenous levels of TCF1 alpha protein   |
| Antibody Type     | Primary antibody   |
| Immunogen         | Recombinant fusion protein of human TCF1 alpha expressed in E. Coli                                  |
| Purification      | This antibody is purified through a protein G column.  |
| Molecular Weight  | Predicted: 44 kD; Observed: 44 kD kD   |
| Form/Buffer       | Mouse IgG1. Liquid in PBS, pH 7.3, 30% glycerol, and 0.01% sodium azide.                             |
| Alternative Names | Lymphoid enhancer-binding factor 1; LEF-1; T cell-specific, transcription factor 1-alpha; TCF1-alpha |
| Gene Symbol       | LEF1   |
| Entrez Gene       | 51176(Human)   |
| SwissProt         | Q9UJU2(Human)  |

\*AREX continuously optimizes our products. Webpage content may not reflect the latest updates. For inquiries, please contact [info@arexbio.com](mailto:info@arexbio.com) or your local distributor.

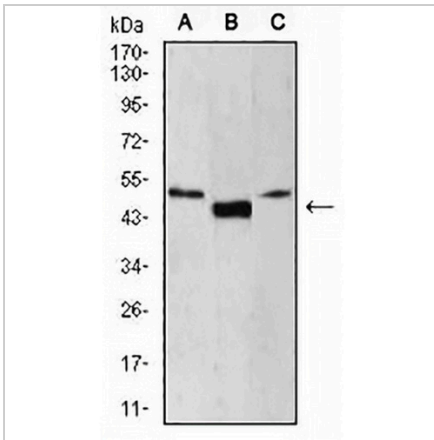
\*Clone Number, Reactivity, Source/Host and Clonality can be found in the product name and Key Features section above.

**DATASHEET**

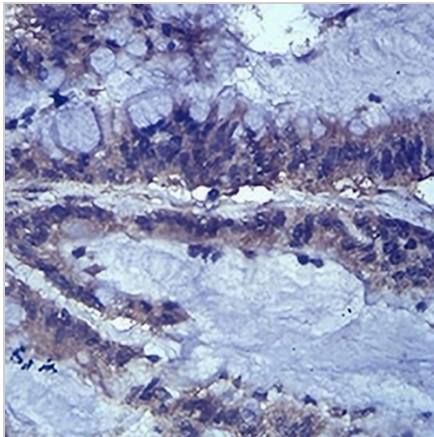
**TCF1 alpha Mouse Monoclonal Antibody(C2815)**

CAT. NO. AMA02427

**DATA**



Western blot analysis of TCF1 alpha expression in Jurkat (A), HepG2 (B), MOLT4 (C) whole cell lysates. (Predicted band size: 44 kD; Observed band size: 44 kD)



Immunohistochemical analysis of TCF1 alpha staining in human colon cancer formalin fixed paraffin embedded tissue section. The section was pre-treated using heat mediated antigen retrieval with sodium citrate buffer (pH 6.0). The section was then incubated with the antibody at room temperature and detected using an HRP conjugated compact polymer system. DAB was used as the chromogen. The section was then counterstained with haematoxylin and mounted with DPX.

**STORAGE**

Store at 4°C short term. For long term storage, store at -20°C, avoiding freeze/thaw cycles.

**NOTE**

For Research Use Only. Not for diagnostic, therapeutics, prophylactic or in vivo use.