

DATASHEET
LH Receptor Mouse Monoclonal Antibody(C2816)
CAT. NO. AMA02428
KEY FEATURES

Target	LH Receptor	Source / Host	Mouse
Reactivity	Human	Clonality	Monoclonal
Applications	WB, IF/ICC, FC	Conjugation	Unconjugated
Form / Buffer	Mouse IgG1. Liquid in PBS, pH 7.3, 30% glycerol, and 0.01% sodium azide.	Storage	at-20°C

BACKGROUND

Receptor for lutropin-choriogonadotropic hormone . The activity of this receptor is mediated by G proteins which activate adenylate cyclase .

APPLICATION

To ensure optimal assay performance, AREX recommends conducting reagent titration tailored to each testing system for optimal detection results.

WB	1:500 - 1:1000
IF/ICC	1:100 - 1:500
FC	1:100 - 1:200

*Results are sample-specific. Please refer to your local assay conditions and test parameters for reference.

PRODUCT OVERVIEW

Description	Mouse monoclonal to LH Receptor
Specificity	Recognizes endogenous levels of LH Receptor protein
Antibody Type	Primary antibody
Immunogen	Recombinant fusion protein of human LH Receptor expressed in E. Coli
Purification	This antibody is purified through a protein G column.
Molecular Weight	Predicted: 79 kD; Observed: 80 kD
Form/Buffer	Mouse IgG1. Liquid in PBS, pH 7.3, 30% glycerol, and 0.01% sodium azide.
Alternative Names	LCGR; LGR2; LHRHR; Lutropin-choriogonadotropin receptor; LH/CG-R; Luteinizing hormone receptor; LHR; LSH-R
Gene Symbol	LHCGR
Entrez Gene	3973(Human)
SwissProt	P22888(Human)

*AREX continuously optimizes our products. Webpage content may not reflect the latest updates. For inquiries, please contact info@arexbio.com or your local distributor.

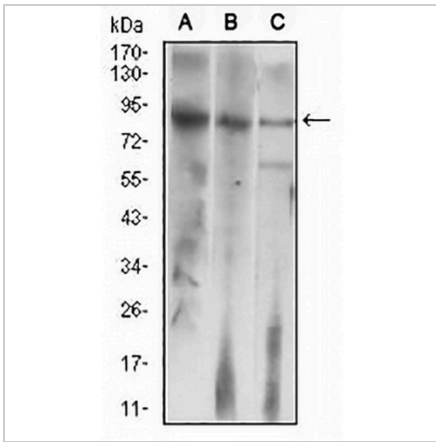
*Clone Number, Reactivity, Source/Host and Clonality can be found in the product name and Key Features section above.

DATASHEET

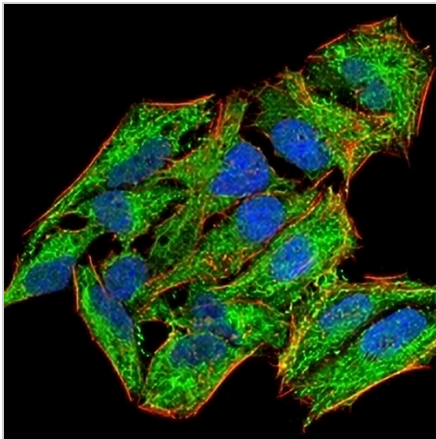
LH Receptor Mouse Monoclonal Antibody(C2816)

CAT. NO. AMA02428

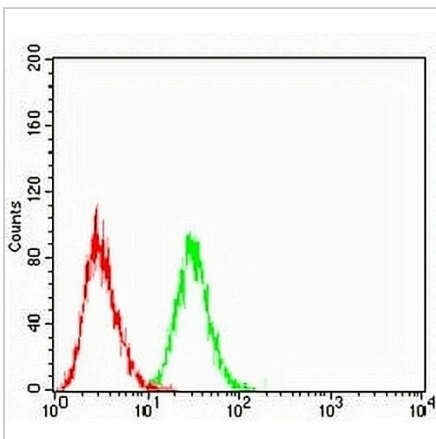
DATA



Western blot analysis of LH Receptor expression in HepG2 (A), Jurkat (B), SMMC7721 (C) whole cell lysates. (Predicted band size: 79 kD; Observed band size: 80 kD)



Immunofluorescent analysis of LH Receptor staining in HeLa cells. Formalin-fixed cells were permeabilized with 0.1% Triton X-100 in TBS for 5-10 minutes and blocked with 3% BSA-PBS for 30 minutes at room temperature. Cells were probed with the primary antibody in 3% BSA-PBS and incubated overnight at 4 °C in a humidified chamber. Cells were washed with PBST and incubated with an AREX® Fluor 488 -conjugated secondary antibody (green) in PBS at room temperature in the dark. Phalloidin - AREX® Fluor 594 was used to stain Actin filaments (red). DAPI was used to stain the cell nuclei (blue).



Flow cytometric analysis of Jurkat cells using Anti-LH Receptor Antibody (green) and negative control (red).

STORAGE

Store at 4°C short term. For long term storage, store at -20°C, avoiding freeze/thaw cycles.

NOTE

For Research Use Only. Not for diagnostic, therapeutics, prophylactic or in vivo use.