

## DATASHEET

# LTBR Mouse Monoclonal Antibody(C2821)

CAT. NO. AMA02433

### KEY FEATURES

Target	LTBR	Source / Host	Mouse
Reactivity	Human, Mouse	Clonality	Monoclonal
Applications	WB, FC	Conjugation	Unconjugated
Form / Buffer	Mouse IgG2a. Liquid in PBS, pH 7.3, 30% glycerol, and 0.01% sodium azide.	Storage	at-20°C

### BACKGROUND

Receptor for the heterotrimeric lymphotoxin containing LTA and LTβ, and for TNFSF14/LIGHT . Activates NF-κB signaling pathway upon stimulation with lymphotoxin (LTA(1)-LTβ(2)) . Promotes apoptosis via TRAF3 and TRAF5. May play a role in the development of lymphoid organs.

### APPLICATION

To ensure optimal assay performance, AREX recommends conducting reagent titration tailored to each testing system for optimal detection results.

WB	1:500 - 1:1000
FC	1:100 - 1:200

\*Results are sample-specific. Please refer to your local assay conditions and test parameters for reference.

### PRODUCT OVERVIEW

Description	Mouse monoclonal to LTBR
Specificity	Recognizes endogenous levels of LTBR protein
Antibody Type	Primary antibody
Immunogen	Recombinant fusion protein of human LTBR expressed in E. Coli
Purification	This antibody is purified through a protein G column.
Molecular Weight	Predicted: 47 kD; Observed: 47 kD
Form/Buffer	Mouse IgG2a. Liquid in PBS, pH 7.3, 30% glycerol, and 0.01% sodium azide.
Alternative Names	D12S370; TNFCR; TNFR3; TNFRSF3; Tumor necrosis factor receptor superfamily member 3; Lymphotoxin-beta receptor; Tumor necrosis factor C receptor; Tumor necrosis factor receptor 2-related protein; Tumor necrosis factor receptor type III; TNF-RIII; TNFR-III
Gene Symbol	LTBR
Entrez Gene	4055(Human)
SwissProt	P36941(Human); P50284(Mouse)

\*AREX continuously optimizes our products. Webpage content may not reflect the latest updates. For inquiries, please contact [info@arexbio.com](mailto:info@arexbio.com) or your local distributor.

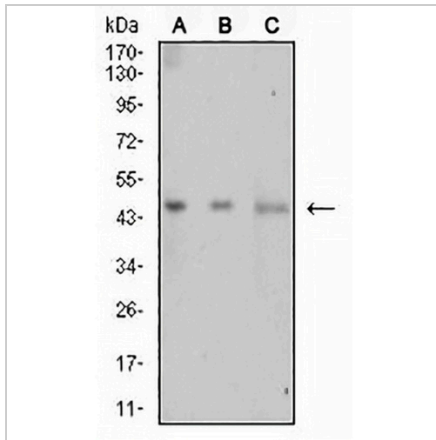
\*Clone Number, Reactivity, Source/Host and Clonality can be found in the product name and Key Features section above.

**DATASHEET**

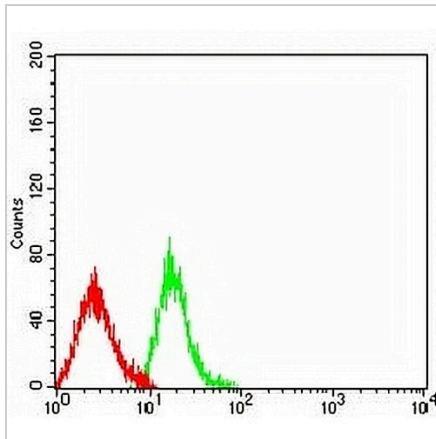
**LTBR Mouse Monoclonal Antibody(C2821)**

CAT. NO. AMA02433

**DATA**



Western blot analysis of LTBR expression in HeLa (A), NIH/3T3 (B), HEK293 (C) whole cell lysates. (Predicted band size: 47 kD; Observed band size: 47 kD)



Flow cytometric analysis of HL60 cells using Anti-LTBR Antibody (green) and negative control (red).

**STORAGE**

Store at 4°C short term. For long term storage, store at -20°C, avoiding freeze/thaw cycles.

**NOTE**

For Research Use Only. Not for diagnostic, therapeutics, prophylactic or in vivo use.