

## DATASHEET

# M6PR Mouse Monoclonal Antibody(C2823)

CAT. NO. AMA02435

### KEY FEATURES

Target	M6PR	Source / Host	Mouse
Reactivity	Human, Mouse	Clonality	Monoclonal
Applications	WB, IHC, FC	Conjugation	Unconjugated
Form / Buffer	Mouse IgG2b. Liquid in PBS, pH 7.3, 30% glycerol, and 0.01% sodium azide.	Storage	at-20°C

### BACKGROUND

Transport of phosphorylated lysosomal enzymes from the Golgi complex and the cell surface to lysosomes. Lysosomal enzymes bearing phosphomannosyl residues bind specifically to mannose-6-phosphate receptors in the Golgi apparatus and the resulting receptor-ligand complex is transported to an acidic prelysosomal compartment where the low pH mediates the dissociation of the complex.

### APPLICATION

To ensure optimal assay performance, AREX recommends conducting reagent titration tailored to each testing system for optimal detection results.

WB	1:500 - 1:1000
IHC	1:100 - 1:500
FC	1:100 - 1:200

\*Results are sample-specific. Please refer to your local assay conditions and test parameters for reference.

### PRODUCT OVERVIEW

Description	Mouse monoclonal to M6PR
Specificity	Recognizes endogenous levels of M6PR protein
Antibody Type	Primary antibody
Immunogen	Recombinant fusion protein of human M6PR expressed in E. Coli
Purification	This antibody is purified through a protein G column.
Molecular Weight	Predicted: 31 kD; Observed: 39 kD kD
Form/Buffer	Mouse IgG2b. Liquid in PBS, pH 7.3, 30% glycerol, and 0.01% sodium azide.
Alternative Names	MPR46; MPRD; Cation-dependent mannose-6-phosphate receptor; CD Man-6-P receptor; CD-MPR; 46 kDa mannose 6-phosphate receptor; MPR 46
Gene Symbol	M6PR
Entrez Gene	4074(Human); 100909548; 312689(Rat)
SwissProt	P20645(Human); P24668(Mouse)

\*AREX continuously optimizes our products. Webpage content may not reflect the latest updates. For inquiries, please contact [info@arexbio.com](mailto:info@arexbio.com) or your local distributor.

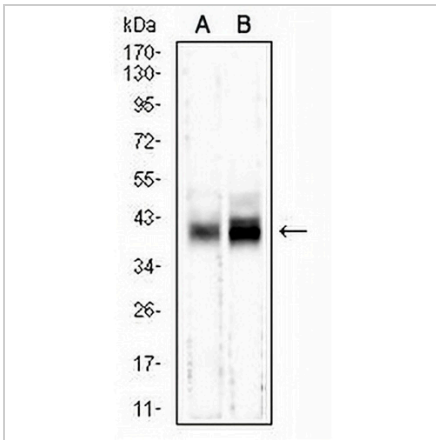
\*Clone Number, Reactivity, Source/Host and Clonality can be found in the product name and Key Features section above.

**DATASHEET**

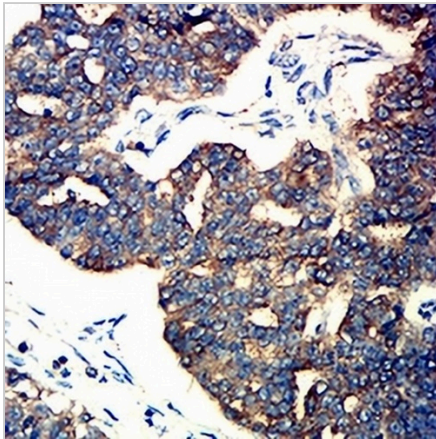
**M6PR Mouse Monoclonal Antibody(C2823)**

CAT. NO. AMA02435

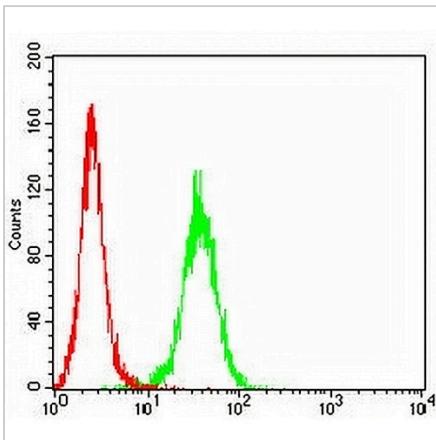
**DATA**



Western blot analysis of M6PR expression in mouse brain (A), HepG2 (B) whole cell lysates. (Predicted band size: 31 kD; Observed band size: 39 kD)



Immunohistochemical analysis of M6PR staining in human ovarian cancer formalin fixed paraffin embedded tissue section. The section was pre-treated using heat mediated antigen retrieval with sodium citrate buffer (pH 6.0). The section was then incubated with the antibody at room temperature and detected using an HRP conjugated compact polymer system. DAB was used as the chromogen. The section was then counterstained with haematoxylin and mounted with DPX.



Flow cytometric analysis of THP1 cells using Anti-M6PR Antibody (green) and negative control (red).

**STORAGE**

Store at 4°C short term. For long term storage, store at -20°C, avoiding freeze/thaw cycles.

**NOTE**

For Research Use Only. Not for diagnostic, therapeutics, prophylactic or in vivo use.