

## DATASHEET

# MAGEA4 Mouse Monoclonal Antibody(C2824)

CAT. NO. AMA02436

### KEY FEATURES

Target	MAGEA4	Source / Host	Mouse
Reactivity	Human, Mouse, Rat	Clonality	Monoclonal
Applications	WB, IHC, FC	Conjugation	Unconjugated
Form / Buffer	Mouse IgG1. Liquid in PBS, pH 7.3, 30% glycerol, and 0.01% sodium azide.	Storage	at-20°C

### BACKGROUND

Regulates cell proliferation through the inhibition of cell cycle arrest at the G1 phase . Also negatively regulates p53-mediated apoptosis .

### APPLICATION

To ensure optimal assay performance, AREX recommends conducting reagent titration tailored to each testing system for optimal detection results.

WB	1:500 - 1:1000
IHC	1:100 - 1:500
FC	1:100 - 1:200

\*Results are sample-specific. Please refer to your local assay conditions and test parameters for reference.

### PRODUCT OVERVIEW

Description	Mouse monoclonal to MAGEA4
Specificity	Recognizes endogenous levels of MAGEA4 protein
Antibody Type	Primary antibody
Immunogen	Recombinant fusion protein of human MAGEA4 expressed in E. Coli
Purification	This antibody is purified through a protein G column.
Molecular Weight	Predicted: 35 kD; Observed: 43 kD
Form/Buffer	Mouse IgG1. Liquid in PBS, pH 7.3, 30% glycerol, and 0.01% sodium azide.
Alternative Names	MAGE4; Melanoma-associated antigen 4; Cancer/testis antigen 1.4; CT1.4; MAGE-4 antigen; MAGE-41 antigen; MAGE-X2 antigen
Gene Symbol	MAGEA4
Entrez Gene	4103(Human)
SwissProt	P43358(Human)

\*AREX continuously optimizes our products. Webpage content may not reflect the latest updates. For inquiries, please contact [info@arexbio.com](mailto:info@arexbio.com) or your local distributor.

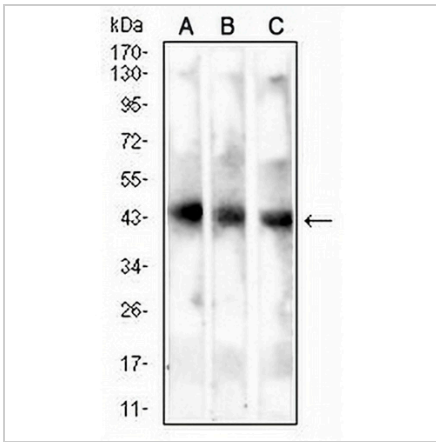
\*Clone Number, Reactivity, Source/Host and Clonality can be found in the product name and Key Features section above.

**DATASHEET**

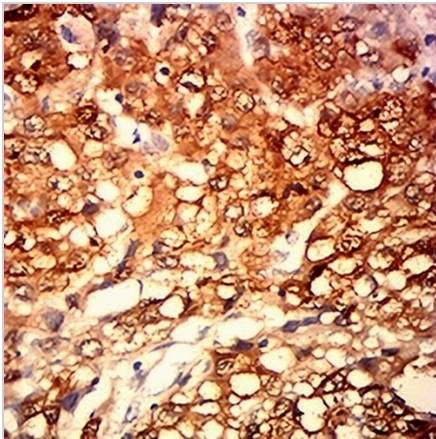
**MAGEA4 Mouse Monoclonal Antibody(C2824)**

CAT. NO. AMA02436

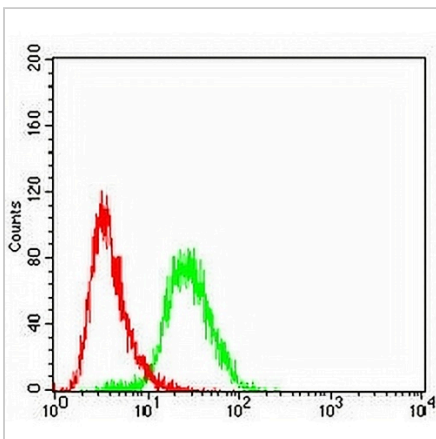
**DATA**



Western blot analysis of MAGEA4 expression in mouse liver (A), rat liver (B), rat kidney (C) whole cell lysates. (Predicted band size: 35 kD; Observed band size: 43 kD)



Immunohistochemical analysis of MAGEA4 staining in human liver cancer formalin fixed paraffin embedded tissue section. The section was pre-treated using heat mediated antigen retrieval with sodium citrate buffer (pH 6.0). The section was then incubated with the antibody at room temperature and detected using an HRP conjugated compact polymer system. DAB was used as the chromogen. The section was then counterstained with haematoxylin and mounted with DPX.



Flow cytometric analysis of K562 cells using Anti-MAGEA4 Antibody (green) and negative control (red).

**STORAGE**

Store at 4°C short term. For long term storage, store at -20°C, avoiding freeze/thaw cycles.

**NOTE**

For Research Use Only. Not for diagnostic, therapeutics, prophylactic or in vivo use.