

**DATASHEET**

**JNK1 Mouse Monoclonal Antibody(C2830)**

CAT. NO. AMA02442

**KEY FEATURES**

Target	JNK1	Source / Host	Mouse
Reactivity	Human, Mouse	Clonality	Monoclonal
Applications	WB, FC	Conjugation	Unconjugated
Form / Buffer	Mouse IgG1. Liquid in PBS, pH 7.3, 30% glycerol, and 0.01% sodium azide.	Storage	at-20°C

**BACKGROUND**

Serine/threonine-protein kinase involved in various processes such as cell proliferation, differentiation, migration, transformation and programmed cell death. Extracellular stimuli such as pro-inflammatory cytokines or physical stress stimulate the stress-activated protein kinase/c-Jun N-terminal kinase (SAP/JNK) signaling pathway signaling pathway . In this cascade, two dual specificity kinases MAP2K4/MKK4 and MAP2K7/MKK7 phosphorylate and activate MAPK8/JNK1. In turn, MAPK8/JNK1 phosphorylates a number of transcription factors, primarily components of AP-1 such as JUN, JDP2 and ATF2 and thus regulates AP-1 transcriptional activity . Phosphorylates the replication licensing factor CDT1, inhibiting the interaction between CDT1 and the histone H4 acetylase HBO1 to replication origins .

**APPLICATION**

To ensure optimal assay performance, AREX recommends conducting reagent titration tailored to each testing system for optimal detection results.

WB	1:500 - 1:1000
FC	1:100 - 1:200

\*Results are sample-specific. Please refer to your local assay conditions and test parameters for reference.

**PRODUCT OVERVIEW**

Description	Mouse monoclonal to JNK1
Specificity	Recognizes endogenous levels of JNK1 protein
Antibody Type	Primary antibody
Immunogen	Recombinant fusion protein of human JNK1 expressed in E. Coli
Purification	This antibody is purified through a protein G column.
Molecular Weight	Predicted: 48 kD; Observed: 48 kD kD
Form/Buffer	Mouse IgG1. Liquid in PBS, pH 7.3, 30% glycerol, and 0.01% sodium azide.
Alternative Names	JNK1; PRKM8; SAPK1; SAPK1C; Mitogen-activated protein kinase 8; MAP kinase 8; MAPK 8; JNK-46; Stress-activated protein kinase 1c; SAPK1c; Stress-activated protein kinase JNK1; c-Jun N-terminal kinase 1
Gene Symbol	MAPK8
Entrez Gene	5599(Human); 116554(Rat)
SwissProt	P45983(Human); Q91Y86(Mouse)

\*AREX continuously optimizes our products. Webpage content may not reflect the latest updates. For inquiries, please contact [info@arexbio.com](mailto:info@arexbio.com) or your local distributor.

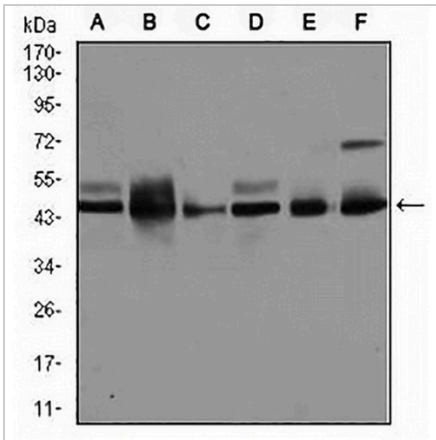
\*Clone Number, Reactivity, Source/Host and Clonality can be found in the product name and Key Features section above.

**DATASHEET**

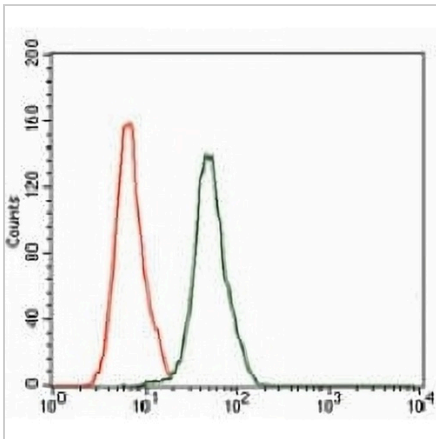
**JNK1 Mouse Monoclonal Antibody(C2830)**

CAT. NO. AMA02442

**DATA**



Western blot analysis of JNK1 expression in A431 (A), K562 (B), HeLa (C), NIH3T3 (D), PC12 (E), MCF7 (F) whole cell lysates. (Predicted band size: 48 kD; Observed band size: 48 kD)



Flow cytometric analysis of HeLa cells using Anti-JNK1 Antibody (green) and negative control (red).

**STORAGE**

Store at 4°C short term. For long term storage, store at -20°C, avoiding freeze/thaw cycles.

**NOTE**

For Research Use Only. Not for diagnostic, therapeutics, prophylactic or in vivo use.