

DATASHEET

MCM3 Mouse Monoclonal Antibody(C2835)

CAT. NO. AMA02447

KEY FEATURES

Target	MCM3	Source / Host	Mouse
Reactivity	Human, Rat, Monkey	Clonality	Monoclonal
Applications	WB, IHC, IF/ICC, FC	Conjugation	Unconjugated
Form / Buffer	Mouse IgG1. Liquid in PBS, pH 7.3, 30% glycerol, and 0.01% sodium azide.	Storage	at-20°C

BACKGROUND

Acts as a component of the MCM2-7 complex (MCM complex) which is the replicative helicase essential for 'once per cell cycle' DNA replication initiation and elongation in eukaryotic cells. Core component of CDC45-MCM-GINS (CMG) helicase, the molecular machine that unwinds template DNA during replication, and around which the replisome is built which is the replicative helicase essential for 'once per cell cycle' DNA replication initiation and elongation in eukaryotic cells. Core component of CDC45-MCM-GINS (CMG) helicase, the molecular machine that unwinds template DNA during replication, and around which the replisome is built .

APPLICATION

To ensure optimal assay performance, AREX recommends conducting reagent titration tailored to each testing system for optimal detection results.

WB	1:500 - 1:1000
IHC	1:100 - 1:500
IF/ICC	1:50 - 1:100
FC	1:100 - 1:200

*Results are sample-specific. Please refer to your local assay conditions and test parameters for reference.

PRODUCT OVERVIEW

Description	Mouse monoclonal to MCM3
Specificity	Recognizes endogenous levels of MCM3 protein
Antibody Type	Primary antibody
Immunogen	Recombinant fusion protein of human MCM3 expressed in E. Coli
Purification	This antibody is purified through a protein G column.
Molecular Weight	Predicted: 91 kD; Observed: 105 kD kD
Form/Buffer	Mouse IgG1. Liquid in PBS, pH 7.3, 30% glycerol, and 0.01% sodium azide.
Alternative Names	DNA replication licensing factor MCM3; DNA polymerase alpha holoenzyme-associated protein P1; P1-MCM3; RLF subunit beta; p102
Gene Symbol	MCM3
Entrez Gene	4172(Human)
SwissProt	P25205(Human)

*AREX continuously optimizes our products. Webpage content may not reflect the latest updates. For inquiries, please contact info@arexbio.com or your local distributor.

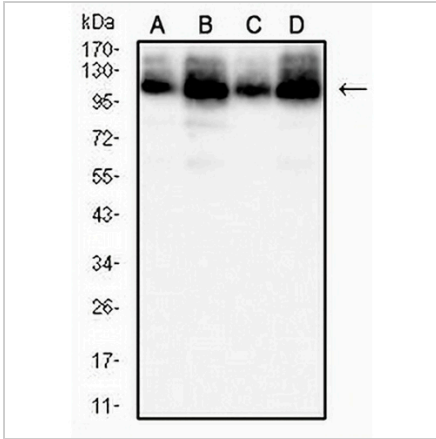
*Clone Number, Reactivity, Source/Host and Clonality can be found in the product name and Key Features section above.

DATASHEET

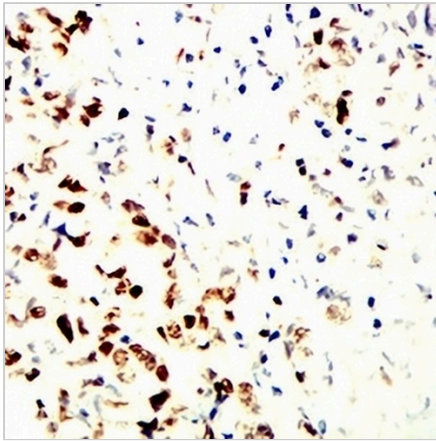
MCM3 Mouse Monoclonal Antibody(C2835)

CAT. NO. AMA02447

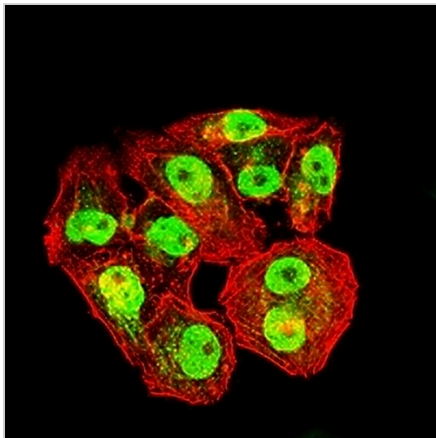
DATA



Western blot analysis of MCM3 expression in PC12 (A), HepG2 (B), Hela (C), COS7 (D) whole cell lysates. (Predicted band size: 91 kD; Observed band size: 105 kD kD)



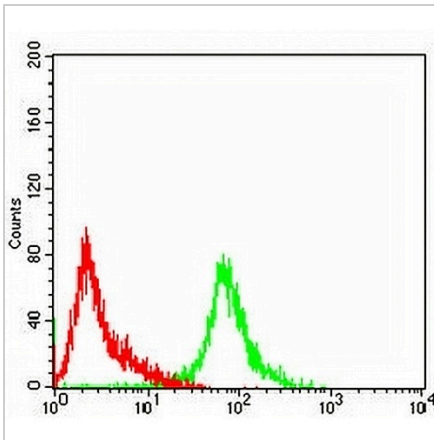
Immunohistochemical analysis of MCM3 staining in human stomach cancer formalin fixed paraffin embedded tissue section. The section was pre-treated using heat mediated antigen retrieval with sodium citrate buffer (pH 6.0). The section was then incubated with the antibody at room temperature and detected using an HRP conjugated compact polymer system. DAB was used as the chromogen. The section was then counterstained with haematoxylin and mounted with DPX.



Immunofluorescent analysis of MCM3 staining in Hela cells. Formalin-fixed cells were permeabilized with 0.1% Triton X-100 in TBS for 5-10 minutes and blocked with 3% BSA-PBS for 30 minutes at room temperature. Cells were probed with the primary antibody in 3% BSA-PBS and incubated overnight at 4 °C in a hidified chamber. Cells were washed with PBST and incubated with an AREX® Fluor 488 -conjugated secondary antibody (green) in PBS at room temperature in the dark. Phalloidin - AREX® Fluor 594 was used to stain Actin filaments (red). DAPI was used to stain the cell nuclei (blue).

DATASHEET**MCM3 Mouse Monoclonal Antibody(C2835)**

CAT. NO. AMA02447

DATA (CONTINUED)

Flow cytometric analysis of HeLa cells using Anti-MCM3 Antibody (green) and negative control (red).

STORAGE

Store at 4°C short term. For long term storage, store at -20°C, avoiding freeze/thaw cycles.

NOTE

For Research Use Only. Not for diagnostic, therapeutics, prophylactic or in vivo use.