

DATASHEET

MITF Mouse Monoclonal Antibody(C2842)

CAT. NO. AMA02454

KEY FEATURES

Target	MITF	Source / Host	Mouse
Reactivity	Human	Clonality	Monoclonal
Applications	WB, FC	Conjugation	Unconjugated
Form / Buffer	Mouse IgG1. Liquid in PBS, pH 7.3, 30% glycerol, and 0.01% sodium azide.	Storage	at-20°C

BACKGROUND

Transcription factor that acts as a master regulator of melanocyte survival and differentiation as well as melanosome biogenesis . Binds to M-boxes (5'-TCATGTG-3') and symmetrical DNA sequences (E-boxes) (5'-CACGTG-3') found in the promoter of pigmentation genes, such as tyrosinase (TYR) . Involved in the cellular response to amino acid availability by acting downstream of MTOR: in the presence of nutrients, MITF phosphorylation by MTOR promotes its inactivation . Upon starvation or lysosomal stress, inhibition of MTOR induces MITF dephosphorylation, resulting in transcription factor activity . Plays an important role in melanocyte development by regulating the expression of tyrosinase (TYR) and tyrosinase-related protein 1 (TYRP1) .

APPLICATION

To ensure optimal assay performance, AREX recommends conducting reagent titration tailored to each testing system for optimal detection results.

WB	1:500 - 1:1000
FC	1:100 - 1:200

*Results are sample-specific. Please refer to your local assay conditions and test parameters for reference.

PRODUCT OVERVIEW

Description	Mouse monoclonal to MITF
Specificity	Recognizes endogenous levels of MITF protein
Antibody Type	Primary antibody
Immunogen	Recombinant fusion protein of human MITF expressed in E. Coli
Purification	This antibody is purified through a protein G column.
Molecular Weight	Predicted: 59 kD; Observed: 55 kD kD
Form/Buffer	Mouse IgG1. Liquid in PBS, pH 7.3, 30% glycerol, and 0.01% sodium azide.
Alternative Names	BHLHE32; MIC,rophthalmia-associated transcription factor; Class E basIC, helix-loop-helix protein 32; bHLHe32
Gene Symbol	MITF
Entrez Gene	4286(Human)
SwissProt	O75030(Human)

*AREX continuously optimizes our products. Webpage content may not reflect the latest updates. For inquiries, please contact info@arexbio.com or your local distributor.

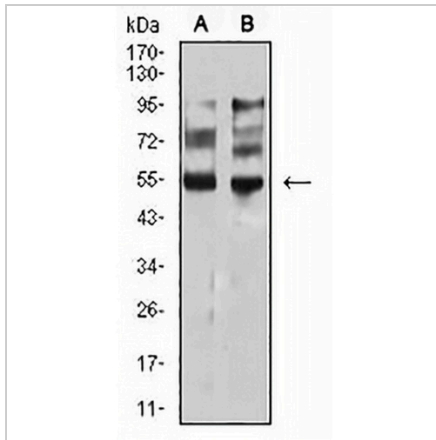
*Clone Number, Reactivity, Source/Host and Clonality can be found in the product name and Key Features section above.

DATASHEET

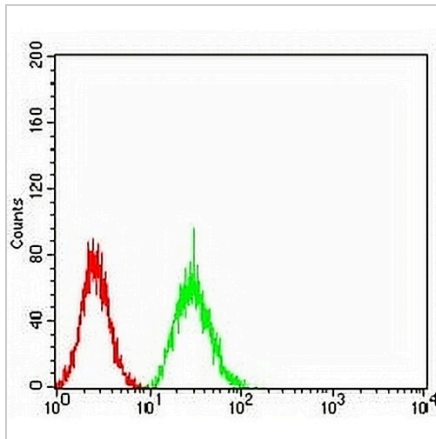
MITF Mouse Monoclonal Antibody(C2842)

CAT. NO. AMA02454

DATA



Western blot analysis of MITF expression in PANC1 (A), A549 (B) whole cell lysates. (Predicted band size: 59 kD; Observed band size: 55 kD)



Flow cytometric analysis of HeLa cells using Anti-MITF Antibody (green) and negative control (red).

STORAGE

Store at 4°C short term. For long term storage, store at -20°C, avoiding freeze/thaw cycles.

NOTE

For Research Use Only. Not for diagnostic, therapeutics, prophylactic or in vivo use.