

DATASHEET

CD10 Mouse Monoclonal Antibody(C2844)

CAT. NO. AMA02456

KEY FEATURES

Target	CD10	Source / Host	Mouse
Reactivity	Human	Clonality	Monoclonal
Applications	WB, IHC, FC	Conjugation	Unconjugated
Form / Buffer	Mouse IgG2b. Liquid in PBS, pH 7.3, 30% glycerol, and 0.01% sodium azide.	Storage	at-20°C

BACKGROUND

Thermolysin-like specificity, but is almost confined on acting on polypeptides of up to 30 amino acids . Biologically important in the destruction of opioid peptides such as Met- and Leu-enkephalins by cleavage of a Gly-Phe bond . Catalyzes cleavage of bradykinin, substance P and neurotensin peptides . Able to cleave angiotensin-1, angiotensin-2 and angiotensin 1-9 . Involved in the degradation of atrial natriuretic factor (ANF) and brain natriuretic factor (BNP(1-32)) . Displays UV-inducible elastase activity toward skin preelastic and elastic fibers .

APPLICATION

To ensure optimal assay performance, AREX recommends conducting reagent titration tailored to each testing system for optimal detection results.

WB	1:500 - 1:1000
IHC	1:100 - 1:500
FC	1:100 - 1:200

*Results are sample-specific. Please refer to your local assay conditions and test parameters for reference.

PRODUCT OVERVIEW

Description	Mouse monoclonal to CD10
Specificity	Recognizes endogenous levels of CD10 protein
Antibody Type	Primary antibody
Immunogen	Recombinant fusion protein of human CD10 expressed in E. Coli
Purification	This antibody is purified through a protein G column.
Molecular Weight	Predicted: 85 kD; Observed: 95 kD kD
Form/Buffer	Mouse IgG2b. Liquid in PBS, pH 7.3, 30% glycerol, and 0.01% sodium azide.
Alternative Names	EPN; Nepriylsin; Atriopeptidase; Common acute lymphocytic, leukemia antigen; CALLA; Enkephalinase; Neutral endopeptidase 24.11; NEP; Neutral endopeptidase; Skin fibroblast elastase; SFE; CD10
Gene Symbol	MME
Entrez Gene	4311(Human)
SwissProt	P08473(Human)

*AREX continuously optimizes our products. Webpage content may not reflect the latest updates. For inquiries, please contact info@arexbio.com or your local distributor.

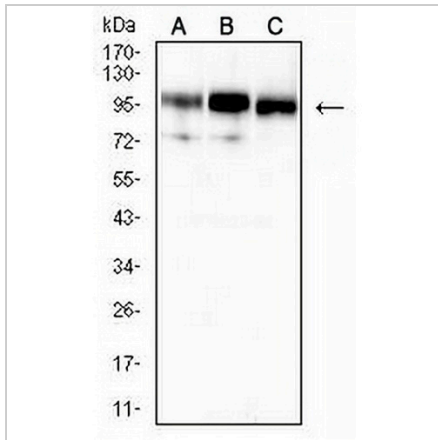
*Clone Number, Reactivity, Source/Host and Clonality can be found in the product name and Key Features section above.

DATASHEET

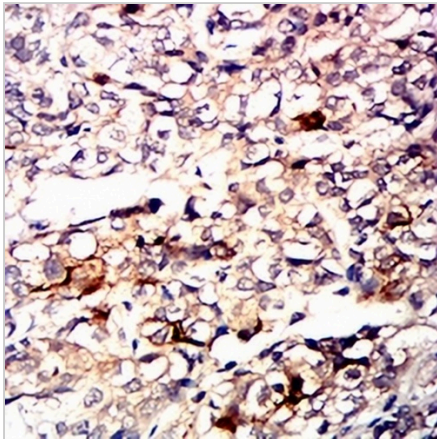
CD10 Mouse Monoclonal Antibody(C2844)

CAT. NO. AMA02456

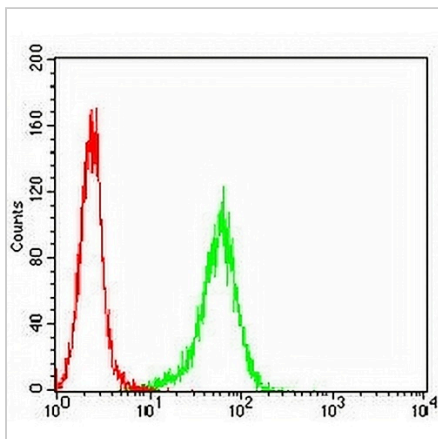
DATA



Western blot analysis of CD10 expression in Raji (A), Ramos (B), LNCap (C) whole cell lysates. (Predicted band size: 85 kD; Observed band size: 95 kD)



Immunohistochemical analysis of CD10 staining in human bladder cancer formalin fixed paraffin embedded tissue section. The section was pre-treated using heat mediated antigen retrieval with sodium citrate buffer (pH 6.0). The section was then incubated with the antibody at room temperature and detected using an HRP conjugated compact polymer system. DAB was used as the chromogen. The section was then counterstained with haematoxylin and mounted with DPX.



Flow cytometric analysis of HeLa cells using Anti-CD10 Antibody (green) and negative control (red).

STORAGE

Store at 4°C short term. For long term storage, store at -20°C, avoiding freeze/thaw cycles.

NOTE

For Research Use Only. Not for diagnostic, therapeutics, prophylactic or in vivo use.