

DATASHEET

MMP2 Mouse Monoclonal Antibody(C2845)

CAT. NO. AMA02457

KEY FEATURES

Target	MMP2	Source / Host	Mouse
Reactivity	Human, Mouse	Clonality	Monoclonal
Applications	WB, FC	Conjugation	Unconjugated
Form / Buffer	Mouse IgG1. Liquid in PBS, pH 7.3, 30% glycerol, and 0.01% sodium azide.	Storage	at-20°C

BACKGROUND

Mediates the proteolysis of CHUK/IKKA and initiates a primary innate immune response by inducing mitochondrial-nuclear stress signaling with activation of the pro-inflammatory NF-kappaB, NFAT and IRF transcriptional pathways.

APPLICATION

To ensure optimal assay performance, AREX recommends conducting reagent titration tailored to each testing system for optimal detection results.

WB	1:500 - 1:1000
FC	1:100 - 1:200

*Results are sample-specific. Please refer to your local assay conditions and test parameters for reference.

PRODUCT OVERVIEW

Description	Mouse monoclonal to MMP2
Specificity	Recognizes endogenous levels of MMP2 protein
Antibody Type	Primary antibody
Immunogen	Recombinant fusion protein of human MMP2 expressed in E. Coli
Purification	This antibody is purified through a protein G column.
Molecular Weight	Predicted: 74 kD; Observed: 74 kD kD
Form/Buffer	Mouse IgG1. Liquid in PBS, pH 7.3, 30% glycerol, and 0.01% sodium azide.
Alternative Names	CLG4A; 72 kDa type IV collagenase; 72 kDa gelatinase; Gelatinase A; Matrix metalloproteinase-2; MMP-2; TBE-1
Gene Symbol	MMP2
Entrez Gene	4313(Human); 81686(Rat)
SwissProt	P08253(Human); P33434(Mouse)

*AREX continuously optimizes our products. Webpage content may not reflect the latest updates. For inquiries, please contact info@arexbio.com or your local distributor.

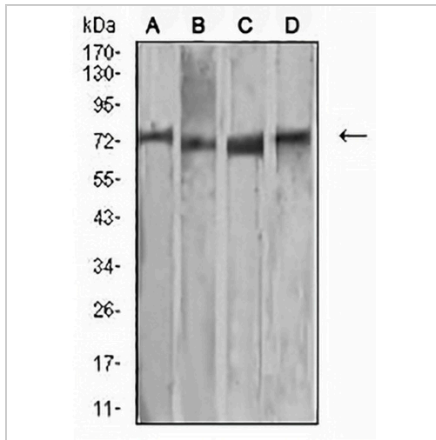
*Clone Number, Reactivity, Source/Host and Clonality can be found in the product name and Key Features section above.

DATASHEET

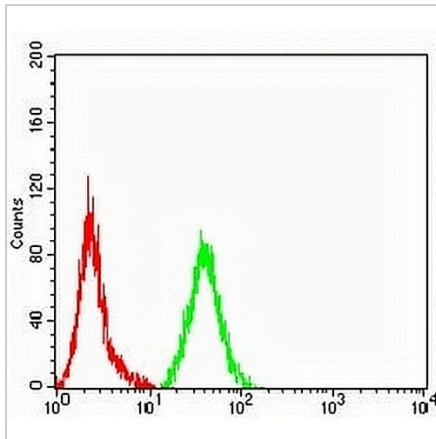
MMP2 Mouse Monoclonal Antibody(C2845)

CAT. NO. AMA02457

DATA



Western blot analysis of MMP2 expression in MCF7 (A), Raw264.7 (B), HUVEC (C), T47D (D) whole cell lysates. (Predicted band size: 74 kD; Observed band size: 74 kD)



Flow cytometric analysis of HeLa cells using Anti-MMP2 Antibody (green) and negative control (red).

STORAGE

Store at 4°C short term. For long term storage, store at -20°C, avoiding freeze/thaw cycles.

NOTE

For Research Use Only. Not for diagnostic, therapeutics, prophylactic or in vivo use.