

DATASHEET

Mesothelin Mouse Monoclonal Antibody(C2852)

CAT. NO. AMA02464

KEY FEATURES

Target	Mesothelin	Source / Host	Mouse
Reactivity	Human, Monkey	Clonality	Monoclonal
Applications	WB, FC	Conjugation	Unconjugated
Form / Buffer	Mouse IgG2b. Liquid in PBS, pH 7.3, 30% glycerol, and 0.01% sodium azide.	Storage	at-20°C

BACKGROUND

Membrane-anchored forms may play a role in cellular adhesion.; Megakaryocyte-potentiating factor (MPF) potentiates megakaryocyte colony formation in vitro.

APPLICATION

To ensure optimal assay performance, AREX recommends conducting reagent titration tailored to each testing system for optimal detection results.

WB	1:500 - 1:1000
FC	1:100 - 1:200

*Results are sample-specific. Please refer to your local assay conditions and test parameters for reference.

PRODUCT OVERVIEW

Description	Mouse monoclonal to Mesothelin
Specificity	Recognizes endogenous levels of Mesothelin protein
Antibody Type	Primary antibody
Immunogen	Recombinant fusion protein of human Mesothelin expressed in E. Coli
Purification	This antibody is purified through a protein G column.
Molecular Weight	Predicted: 69 kD; Observed: 69 kD kD
Form/Buffer	Mouse IgG2b. Liquid in PBS, pH 7.3, 30% glycerol, and 0.01% sodium azide.
Alternative Names	MPF; Mesothelin; CAK1 antigen; Pre-pro-megakaryocyte-potentiating factor
Gene Symbol	MSLN
Entrez Gene	10232(Human)
SwissProt	Q13421(Human)

*AREX continuously optimizes our products. Webpage content may not reflect the latest updates. For inquiries, please contact info@arexbio.com or your local distributor.

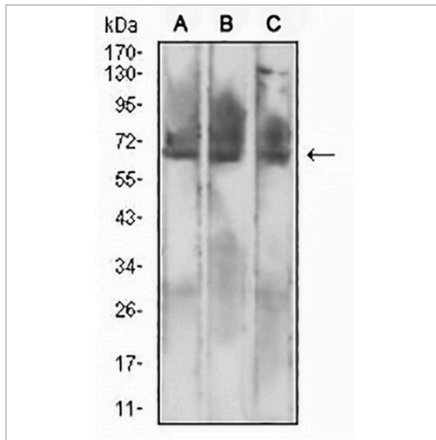
*Clone Number, Reactivity, Source/Host and Clonality can be found in the product name and Key Features section above.

DATASHEET

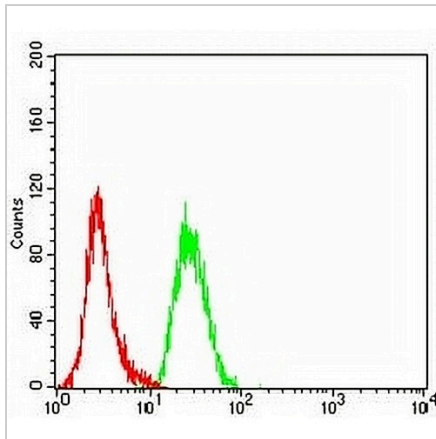
Mesothelin Mouse Monoclonal Antibody(C2852)

CAT. NO. AMA02464

DATA



Western blot analysis of Mesothelin expression in CHO3D10 (A), SKMES1 (B), HL60 (C) whole cell lysates. (Predicted band size: 69 kD; Observed band size: 69 kD)



Flow cytometric analysis of HeLa cells using Anti-Mesothelin Antibody (green) and negative control (red).

STORAGE

Store at 4°C short term. For long term storage, store at -20°C, avoiding freeze/thaw cycles.

NOTE

For Research Use Only. Not for diagnostic, therapeutics, prophylactic or in vivo use.