

DATASHEET

GDF8 Mouse Monoclonal Antibody(C2856)

CAT. NO. AMA02468

KEY FEATURES

Target	GDF8	Source / Host	Mouse
Reactivity	Human	Clonality	Monoclonal
Applications	WB, IHC, FC	Conjugation	Unconjugated
Form / Buffer	Mouse IgG2b. Liquid in PBS, pH 7.3, 30% glycerol, and 0.01% sodium azide.	Storage	at-20°C

BACKGROUND

Acts specifically as a negative regulator of skeletal muscle growth.

APPLICATION

To ensure optimal assay performance, AREX recommends conducting reagent titration tailored to each testing system for optimal detection results.

WB	1:500 - 1:1000
IHC	1:100 - 1:500
FC	1:100 - 1:200

*Results are sample-specific. Please refer to your local assay conditions and test parameters for reference.

PRODUCT OVERVIEW

Description	Mouse monoclonal to GDF8
Specificity	Recognizes endogenous levels of GDF8 protein
Antibody Type	Primary antibody
Immunogen	Recombinant fusion protein of human GDF8 expressed in E. Coli
Purification	This antibody is purified through a protein G column.
Molecular Weight	Predicted: 43 kD; Observed: 39 kD kD
Form/Buffer	Mouse IgG2b. Liquid in PBS, pH 7.3, 30% glycerol, and 0.01% sodium azide.
Alternative Names	GDF8; Growth/differentiation factor 8; GDF-8; Myostatin
Gene Symbol	MSTN
Entrez Gene	2660(Human)
SwissProt	O14793(Human)

*AREX continuously optimizes our products. Webpage content may not reflect the latest updates. For inquiries, please contact info@arexbio.com or your local distributor.

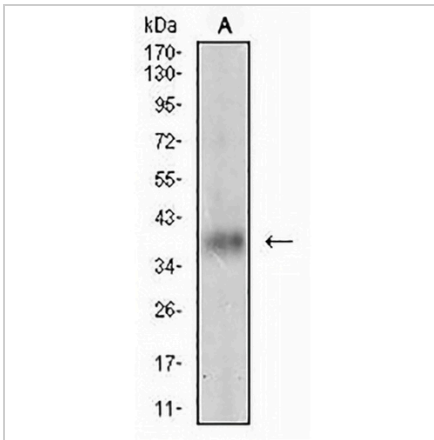
*Clone Number, Reactivity, Source/Host and Clonality can be found in the product name and Key Features section above.

DATASHEET

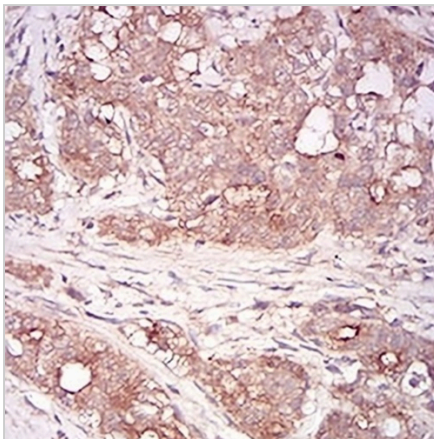
GDF8 Mouse Monoclonal Antibody(C2856)

CAT. NO. AMA02468

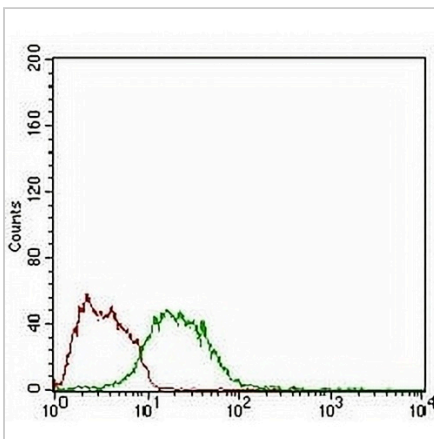
DATA



Western blot analysis of GDF8 expression in LNCap (A) whole cell lysates. (Predicted band size: 43 kD; Observed band size: 39 kD)



Immunohistochemical analysis of GDF8 staining in human cervical cancer formalin fixed paraffin embedded tissue section. The section was pre-treated using heat mediated antigen retrieval with sodium citrate buffer (pH 6.0). The section was then incubated with the antibody at room temperature and detected using an HRP conjugated compact polymer system. DAB was used as the chromogen. The section was then counterstained with haematoxylin and mounted with DPX.



Flow cytometric analysis of LNCAP cells using Anti-GDF8 Antibody (green) and negative control (red).

STORAGE

Store at 4°C short term. For long term storage, store at -20°C, avoiding freeze/thaw cycles.

NOTE

For Research Use Only. Not for diagnostic, therapeutics, prophylactic or in vivo use.