

**DATASHEET**

**MTA1 Mouse Monoclonal Antibody(C2857)**

CAT. NO. AMA02469

**KEY FEATURES**

Target	MTA1	Source / Host	Mouse
Reactivity	Human	Clonality	Monoclonal
Applications	WB, FC	Conjugation	Unconjugated
Form / Buffer	Mouse IgG2b. Liquid in PBS, pH 7.3, 30% glycerol, and 0.01% sodium azide.	Storage	at-20°C

**BACKGROUND**

Transcriptional coregulator which can act as both a transcriptional corepressor and coactivator . Acts as a component of the histone deacetylase NuRD complex which participates in the remodeling of chromatin . In the NuRD complex, regulates transcription of its targets by modifying the acetylation status of the target chromatin and cofactor accessibility to the target DNA . In conjunction with other components of NuRD, acts as a transcriptional corepressor of BRCA1, ESR1, TFF1 and CDKN1A . Acts as a transcriptional coactivator of BCAS3, and SUMO2, independent of the NuRD complex . Stimulates the expression of WNT1 by inhibiting the expression of its transcriptional corepressor SIX3 . Regulates p53-dependent and -independent DNA repair processes following genotoxic stress .

**APPLICATION**

To ensure optimal assay performance, AREX recommends conducting reagent titration tailored to each testing system for optimal detection results.

WB	1:500 - 1:1000
FC	1:100 - 1:200

\*Results are sample-specific. Please refer to your local assay conditions and test parameters for reference.

**PRODUCT OVERVIEW**

Description	Mouse monoclonal to MTA1
Specificity	Recognizes endogenous levels of MTA1 protein
Antibody Type	Primary antibody
Immunogen	Recombinant fusion protein of human MTA1 expressed in E. Coli
Purification	This antibody is purified through a protein G column.
Molecular Weight	Predicted: 81 kD; Observed: 80 kD kD
Form/Buffer	Mouse IgG2b. Liquid in PBS, pH 7.3, 30% glycerol, and 0.01% sodium azide.
Alternative Names	Metastasis-associated protein MTA1
Gene Symbol	MTA1
Entrez Gene	9112(Human)
SwissProt	Q13330(Human)

\*AREX continuously optimizes our products. Webpage content may not reflect the latest updates. For inquiries, please contact [info@arexbio.com](mailto:info@arexbio.com) or your local distributor.

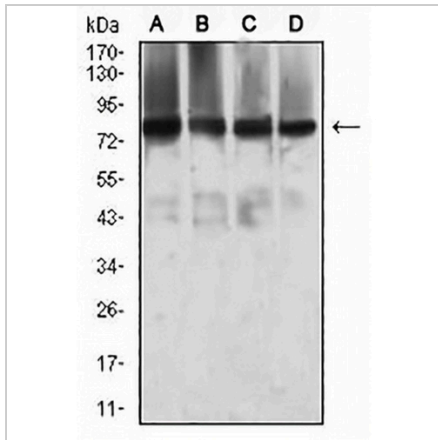
\*Clone Number, Reactivity, Source/Host and Clonality can be found in the product name and Key Features section above.

**DATASHEET**

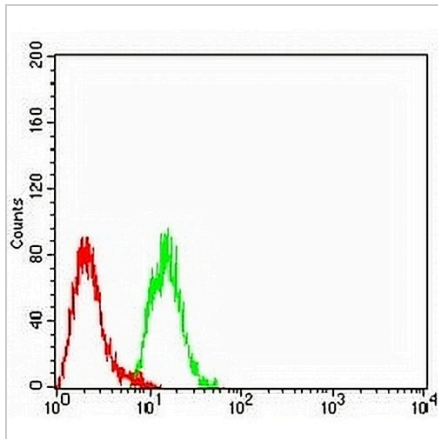
**MTA1 Mouse Monoclonal Antibody(C2857)**

CAT. NO. AMA02469

**DATA**



Western blot analysis of MTA1 expression in SW480 (A), T47D (B), MCF7 (C), COS7 (D) whole cell lysates. (Predicted band size: 81 kD; Observed band size: 80 kD)



Flow cytometric analysis of HeLa cells using Anti-MTA1 Antibody (green) and negative control (red).

**STORAGE**

Store at 4°C short term. For long term storage, store at -20°C, avoiding freeze/thaw cycles.

**NOTE**

For Research Use Only. Not for diagnostic, therapeutics, prophylactic or in vivo use.