

DATASHEET

Metadherin Mouse Monoclonal Antibody(C2858)

CAT. NO. AMA02470

KEY FEATURES

Target	Metadherin	Source / Host	Mouse
Reactivity	Human, Monkey	Clonality	Monoclonal
Applications	WB, IHC, IF/ICC, FC	Conjugation	Unconjugated
Form / Buffer	Mouse IgG1. Liquid in PBS, pH 7.3, 30% glycerol, and 0.01% sodium azide.	Storage	at-20°C

BACKGROUND

Down-regulates SLC1A2/EAAT2 promoter activity when expressed ectopically. Activates the nuclear factor kappa-B (NF-kappa-B) transcription factor. Promotes anchorage-independent growth of immortalized melanocytes and astrocytes which is a key component in tumor cell expansion. Promotes lung metastasis and also has an effect on bone and brain metastasis, possibly by enhancing the seeding of tumor cells to the target organ endothelium. Induces chemoresistance.

APPLICATION

To ensure optimal assay performance, AREX recommends conducting reagent titration tailored to each testing system for optimal detection results.

WB	1:500 - 1:1000
IHC	1:100 - 1:500
IF/ICC	1:50 - 1:100
FC	1:100 - 1:200

*Results are sample-specific. Please refer to your local assay conditions and test parameters for reference.

PRODUCT OVERVIEW

Description	Mouse monoclonal to Metadherin
Specificity	Recognizes endogenous levels of Metadherin protein
Antibody Type	Primary antibody
Immunogen	Recombinant fusion protein of human Metadherin expressed in HEK293
Purification	This antibody is purified through a protein G column.
Molecular Weight	Predicted: 75 kD; Observed: 75 kD
Form/Buffer	Mouse IgG1. Liquid in PBS, pH 7.3, 30% glycerol, and 0.01% sodium azide.
Alternative Names	AEG1; LYRIC.; Protein LYRIC.; 3D3/LYRIC.; Astrocyte elevated gene-1 protein; AEG-1; Lysine-rIC,h CEACAM1 co-isolated protein; Metadherin; Metastasis adhesion protein
Gene Symbol	MTDH
Entrez Gene	92140(Human)
SwissProt	Q86UE4(Human)

*AREX continuously optimizes our products. Webpage content may not reflect the latest updates. For inquiries, please contact info@arexbio.com or your local distributor.

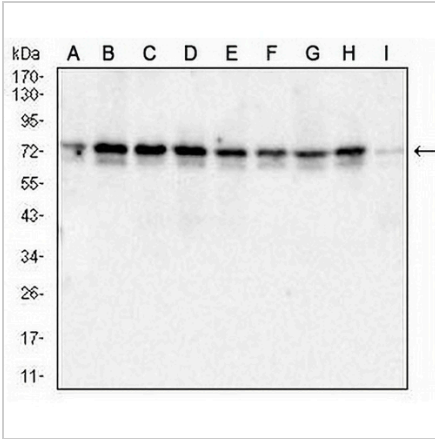
*Clone Number, Reactivity, Source/Host and Clonality can be found in the product name and Key Features section above.

DATASHEET

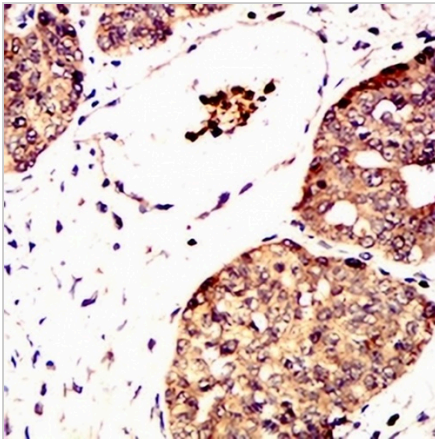
Metadherin Mouse Monoclonal Antibody(C2858)

CAT. NO. AMA02470

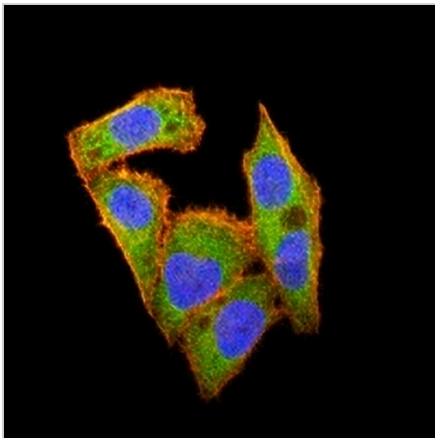
DATA



Western blot analysis of Metadherin expression in MCF7 (A), T47D (B), Jurkat (C), K562 (D), Hela (E), PC3 (F), HepG2 (G), A431 (H), COS7 (I) whole cell lysates. (Predicted band size: 75 kD; Observed band size: 75 kD)



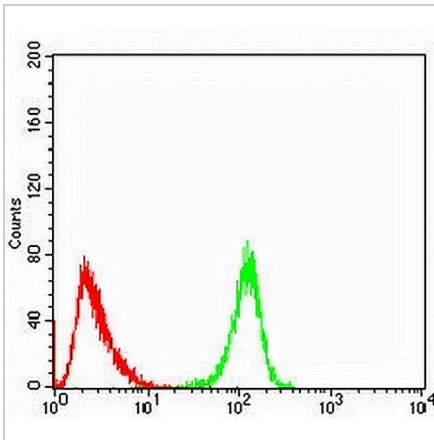
Immunohistochemical analysis of Metadherin staining in human ovarian cancer formalin fixed paraffin embedded tissue section. The section was pre-treated using heat mediated antigen retrieval with sodium citrate buffer (pH 6.0). The section was then incubated with the antibody at room temperature and detected using an HRP conjugated compact polymer system. DAB was used as the chromogen. The section was then counterstained with haematoxylin and mounted with DPX.



Immunofluorescent analysis of Metadherin staining in HeLa cells. Formalin-fixed cells were permeabilized with 0.1% Triton X-100 in TBS for 5-10 minutes and blocked with 3% BSA-PBS for 30 minutes at room temperature. Cells were probed with the primary antibody in 3% BSA-PBS and incubated overnight at 4 °C in a humidified chamber. Cells were washed with PBST and incubated with an AREX® Fluor 488 -conjugated secondary antibody (green) in PBS at room temperature in the dark. Phalloidin - AREX® Fluor 594 was used to stain Actin filaments (red). DAPI was used to stain the cell nuclei (blue).

DATASHEET**Metadherin Mouse Monoclonal Antibody(C2858)**

CAT. NO. AMA02470

DATA (CONTINUED)

Flow cytometric analysis of HeLa cells using Anti-Metadherin Antibody (green) and negative control (red).

STORAGE

Store at 4°C short term. For long term storage, store at -20°C, avoiding freeze/thaw cycles.

NOTE

For Research Use Only. Not for diagnostic, therapeutics, prophylactic or in vivo use.