

DATASHEET

CD56 Mouse Monoclonal Antibody(C2864)

CAT. NO. AMA02476

KEY FEATURES

Target	CD56	Source / Host	Mouse
Reactivity	Human, Mouse, Monkey	Clonality	Monoclonal
Applications	WB, IHC, FC	Conjugation	Unconjugated
Form / Buffer	Mouse IgG1. Liquid in PBS, pH 7.3, 30% glycerol, and 0.01% sodium azide.	Storage	at-20°C

BACKGROUND

This protein is a cell adhesion molecule involved in neuron-neuron adhesion, neurite fasciculation, outgrowth of neurites, etc.; (Microbial infection) Acts as a receptor for rabies virus.

APPLICATION

To ensure optimal assay performance, AREX recommends conducting reagent titration tailored to each testing system for optimal detection results.

WB	1:500 - 1:1000
IHC	1:100 - 1:500
FC	1:100 - 1:200

*Results are sample-specific. Please refer to your local assay conditions and test parameters for reference.

PRODUCT OVERVIEW

Description	Mouse monoclonal to CD56
Specificity	Recognizes endogenous levels of CD56 protein
Antibody Type	Primary antibody
Immunogen	Recombinant fusion protein of human CD56 expressed in E. Coli
Purification	This antibody is purified through a protein G column.
Molecular Weight	Predicted: 95 kD; Observed: 93 kD
Form/Buffer	Mouse IgG1. Liquid in PBS, pH 7.3, 30% glycerol, and 0.01% sodium azide.
Alternative Names	NCAM; Neural cell adhesion molecule 1; N-CAM-1; NCAM-1; CD56
Gene Symbol	NCAM1
Entrez Gene	4684(Human); 24586(Rat)
SwissProt	P13591(Human); P13595(Mouse)

*AREX continuously optimizes our products. Webpage content may not reflect the latest updates. For inquiries, please contact info@arexbio.com or your local distributor.

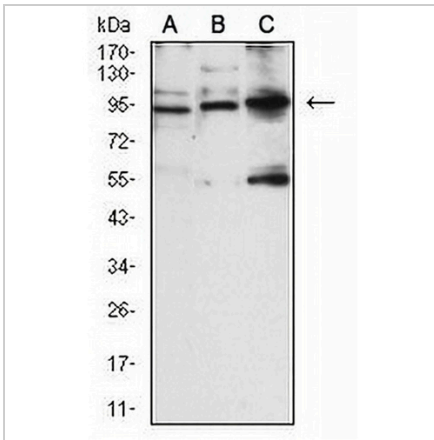
*Clone Number, Reactivity, Source/Host and Clonality can be found in the product name and Key Features section above.

DATASHEET

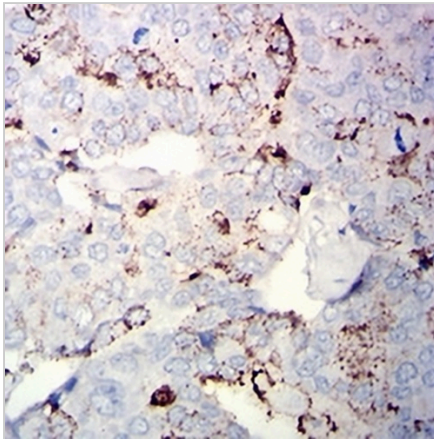
CD56 Mouse Monoclonal Antibody(C2864)

CAT. NO. AMA02476

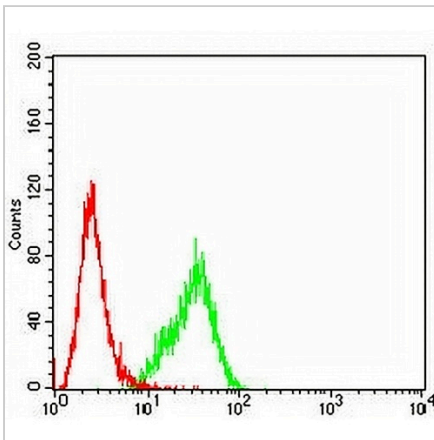
DATA



Western blot analysis of CD56 expression in SHSY5Y (A), COS7 (B), NIH3T3 (C) whole cell lysates. (Predicted band size: 95 kD; Observed band size: 93 kD)



Immunohistochemical analysis of CD56 staining in human breast cancer formalin fixed paraffin embedded tissue section. The section was pre-treated using heat mediated antigen retrieval with sodium citrate buffer (pH 6.0). The section was then incubated with the antibody at room temperature and detected using an HRP conjugated compact polymer system. DAB was used as the chromogen. The section was then counterstained with haematoxylin and mounted with DPX.



Flow cytometric analysis of HeLa cells using Anti-CD56 Antibody (green) and negative control (red).

STORAGE

Store at 4°C short term. For long term storage, store at -20°C, avoiding freeze/thaw cycles.

NOTE

For Research Use Only. Not for diagnostic, therapeutics, prophylactic or in vivo use.