

## DATASHEET

# NDC80 Mouse Monoclonal Antibody(C2867)

CAT. NO. AMA02479

### KEY FEATURES

Target	NDC80	Source / Host	Mouse
Reactivity	Human	Clonality	Monoclonal
Applications	WB, IHC, IF/ICC, FC	Conjugation	Unconjugated
Form / Buffer	Mouse IgG2a. Liquid in PBS, pH 7.3, 30% glycerol, and 0.01% sodium azide.	Storage	at-20°C

### BACKGROUND

Acts as a component of the essential kinetochore-associated NDC80 complex, which is required for chromosome segregation and spindle checkpoint activity . Required for kinetochore integrity and the organization of stable microtubule binding sites in the outer plate of the kinetochore . The NDC80 complex synergistically enhances the affinity of the SKA1 complex for microtubules and may allow the NDC80 complex to track depolymerizing microtubules . Plays a role in chromosome congression and is essential for the end-on attachment of the kinetochores to spindle microtubules .

### APPLICATION

To ensure optimal assay performance, AREX recommends conducting reagent titration tailored to each testing system for optimal detection results.

WB	1:500 - 1:1000
IHC	1:100 - 1:500
IF/ICC	1:100 - 1:500
FC	1:100 - 1:200

\*Results are sample-specific. Please refer to your local assay conditions and test parameters for reference.

### PRODUCT OVERVIEW

Description	Mouse monoclonal to NDC80
Specificity	Recognizes endogenous levels of NDC80 protein
Antibody Type	Primary antibody
Immunogen	Recombinant fusion protein of human NDC80 expressed in HEK293
Purification	This antibody is purified through a protein G column.
Molecular Weight	Predicted: 74 kD; Observed: 72 kD
Form/Buffer	Mouse IgG2a. Liquid in PBS, pH 7.3, 30% glycerol, and 0.01% sodium azide.
Alternative Names	HEC; HEC1; KNTC2; Kinetochore protein NDC80 homolog; Highly expressed in cancer protein; Kinetochore protein Hec1; HsHec1; Kinetochore-associated protein 2; Retinoblastoma-associated protein HEC
Gene Symbol	NDC80
Entrez Gene	10403(Human)
SwissProt	O14777(Human)

\*AREX continuously optimizes our products. Webpage content may not reflect the latest updates. For inquiries, please contact [info@arexbio.com](mailto:info@arexbio.com) or your local distributor.

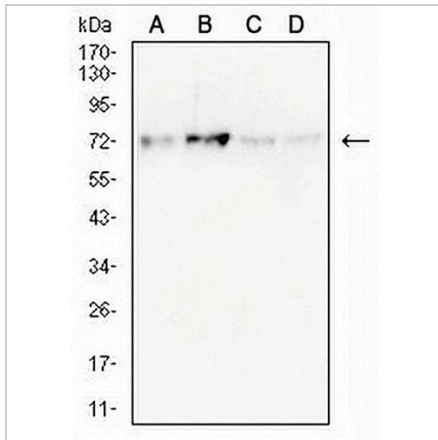
\*Clone Number, Reactivity, Source/Host and Clonality can be found in the product name and Key Features section above.

**DATASHEET**

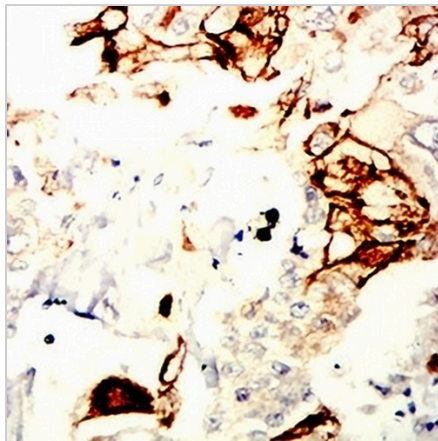
**NDC80 Mouse Monoclonal Antibody(C2867)**

CAT. NO. AMA02479

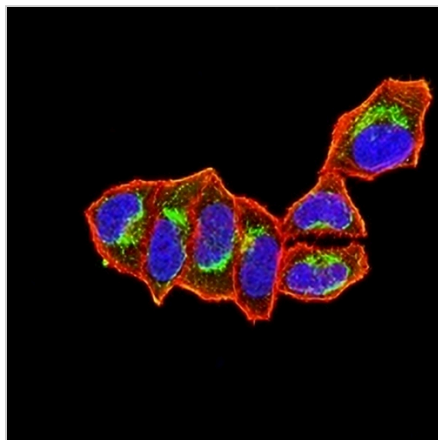
**DATA**



Western blot analysis of NDC80 expression in HeLa (A), HepG2 (B), Jurkat (C), K562 (D) whole cell lysates. (Predicted band size: 74 kD; Observed band size: 72 kD)



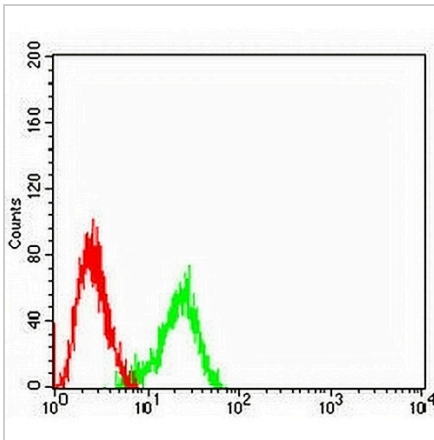
Immunohistochemical analysis of NDC80 staining in human mammary cancer formalin fixed paraffin embedded tissue section. The section was pre-treated using heat mediated antigen retrieval with sodium citrate buffer (pH 6.0). The section was then incubated with the antibody at room temperature and detected using an HRP conjugated compact polymer system. DAB was used as the chromogen. The section was then counterstained with haematoxylin and mounted with DPX.



Immunofluorescent analysis of NDC80 staining in HeLa cells. Formalin-fixed cells were permeabilized with 0.1% Triton X-100 in TBS for 5-10 minutes and blocked with 3% BSA-PBS for 30 minutes at room temperature. Cells were probed with the primary antibody in 3% BSA-PBS and incubated overnight at 4 °C in a humidified chamber. Cells were washed with PBST and incubated with an AREX® Fluor 488 -conjugated secondary antibody (green) in PBS at room temperature in the dark. Phalloidin - AREX® Fluor 594 was used to stain Actin filaments (red). DAPI was used to stain the cell nuclei (blue).

**DATASHEET****NDC80 Mouse Monoclonal Antibody(C2867)**

CAT. NO. AMA02479

**DATA (CONTINUED)**

Flow cytometric analysis of HeLa cells using Anti-NDC80 Antibody (green) and negative control (red).

**STORAGE**

Store at 4°C short term. For long term storage, store at -20°C, avoiding freeze/thaw cycles.

**NOTE**

For Research Use Only. Not for diagnostic, therapeutics, prophylactic or in vivo use.