

DATASHEET

NEDD9 Mouse Monoclonal Antibody(C2869)

CAT. NO. AMA02481

KEY FEATURES

Target	NEDD9	Source / Host	Mouse
Reactivity	Human, Rat	Clonality	Monoclonal
Applications	WB, IF/ICC, FC	Conjugation	Unconjugated
Form / Buffer	Mouse IgG1. Liquid in PBS, pH 7.3, 30% glycerol, and 0.01% sodium azide.	Storage	at-20°C

BACKGROUND

Scaffolding protein which plays a central coordinating role for tyrosine-kinase-based signaling related to cell adhesion . As a focal adhesion protein, plays a role in embryonic fibroblast migration . May play an important role in integrin beta-1 or B cell antigen receptor (BCR) mediated signaling in B- and T-cells. Integrin beta-1 stimulation leads to recruitment of various proteins including CRKL and SHPTP2 to the tyrosine phosphorylated form . Promotes adhesion and migration of lymphocytes; as a result required for the correct migration of lymphocytes to the spleen and other secondary lymphoid organs . Plays a role in the organization of T-cell F-actin cortical cytoskeleton and the centralization of T-cell receptor microclusters at the immunological synapse .

APPLICATION

To ensure optimal assay performance, AREX recommends conducting reagent titration tailored to each testing system for optimal detection results.

WB	1:500 - 1:1000
IF/ICC	1:100 - 1:500
FC	1:100 - 1:200

*Results are sample-specific. Please refer to your local assay conditions and test parameters for reference.

PRODUCT OVERVIEW

Description	Mouse monoclonal to NEDD9
Specificity	Recognizes endogenous levels of NEDD9 protein
Antibody Type	Primary antibody
Immunogen	Recombinant fusion protein of human NEDD9 expressed in E. Coli
Purification	This antibody is purified through a protein G column.
Molecular Weight	Predicted: 93 kD; Observed: 100 kD kD
Form/Buffer	Mouse IgG1. Liquid in PBS, pH 7.3, 30% glycerol, and 0.01% sodium azide.
Alternative Names	CASL; CASS2; Enhancer of filamentation 1; hEF1; CRK-associated substrate-related protein; CAS-L; CasL; Cas scaffolding protein family member 2; Neural precursor cell expressed developmentally down-regulated protein 9; NEDD-9; Renal carcinoma antigen NY-REN-12; p105
Gene Symbol	NEDD9
Entrez Gene	4739(Human)
SwissProt	Q14511(Human)

*AREX continuously optimizes our products. Webpage content may not reflect the latest updates. For inquiries, please contact info@arexbio.com or your local distributor.

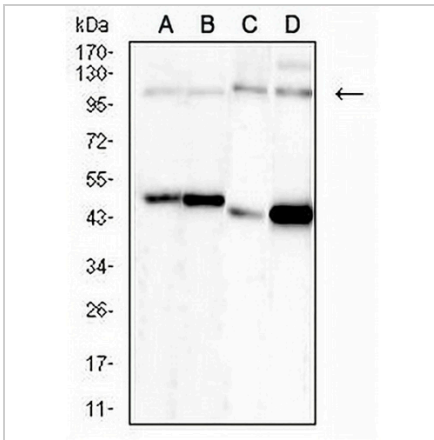
*Clone Number, Reactivity, Source/Host and Clonality can be found in the product name and Key Features section above.

DATASHEET

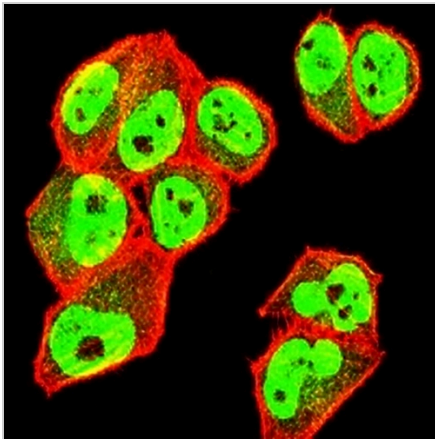
NEDD9 Mouse Monoclonal Antibody(C2869)

CAT. NO. AMA02481

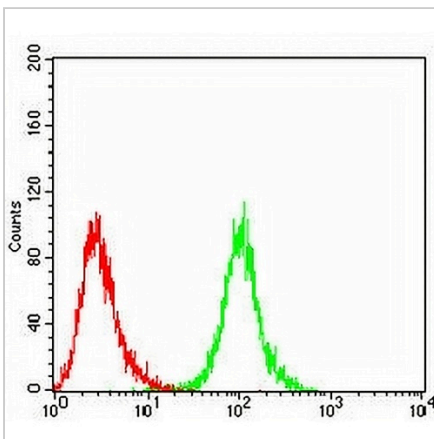
DATA



Western blot analysis of NEDD9 expression in MCF7 (A), HeLa (B), C2C12 (C), HEK293 (D) whole cell lysates. (Predicted band size: 93 kD; Observed band size: 100 kD kD)



Immunofluorescent analysis of NEDD9 staining in HeLa cells. Formalin-fixed cells were permeabilized with 0.1% Triton X-100 in TBS for 5-10 minutes and blocked with 3% BSA-PBS for 30 minutes at room temperature. Cells were probed with the primary antibody in 3% BSA-PBS and incubated overnight at 4 °C in a humidified chamber. Cells were washed with PBST and incubated with an AREX® Fluor 488 -conjugated secondary antibody (green) in PBS at room temperature in the dark. Phalloidin - AREX® Fluor 594 was used to stain Actin filaments (red). DAPI was used to stain the cell nuclei (blue).



Flow cytometric analysis of HepG2 cells using Anti-NEDD9 Antibody (green) and negative control (red).

STORAGE

Store at 4°C short term. For long term storage, store at -20°C, avoiding freeze/thaw cycles.

NOTE

For Research Use Only. Not for diagnostic, therapeutics, prophylactic or in vivo use.