

DATASHEET

CARD12 (Phospho-S533) Rat Monoclonal Antibody(C2874)

CAT. NO. AMA02486

KEY FEATURES

Target	CARD12 (Phospho-S533)	Source / Host	Rat
Reactivity	Human, Mouse	Clonality	Monoclonal
Applications	WB, IF/ICC	Conjugation	Unconjugated
Form / Buffer	Mouse IgG2b. Liquid in PBS, pH 7.3, 30% glycerol, and 0.01% sodium azide.	Storage	at-20°C

BACKGROUND

Key component of inflammasomes that indirectly senses specific proteins from pathogenic bacteria and fungi and responds by assembling an inflammasome complex that promotes caspase-1 activation, cytokine production and macrophage pyroptosis . The NLRC4 inflammasome is activated as part of the innate immune response to a range of intracellular bacteria .

APPLICATION

To ensure optimal assay performance, AREX recommends conducting reagent titration tailored to each testing system for optimal detection results.

WB	1:500 - 1:1000
IF/ICC	1:100 - 1:500

*Results are sample-specific. Please refer to your local assay conditions and test parameters for reference.

PRODUCT OVERVIEW

Description	Mouse monoclonal to CARD12 (Phospho-S533)
Specificity	Recognizes endogenous levels of CARD12 (Phospho-S533) protein
Antibody Type	Primary antibody
Immunogen	Synthesized peptide of mouse CARD12 (Phospho-S533)
Purification	This antibody is purified through a protein G column.
Molecular Weight	Predicted: 117 kD; Observed: 117 kD
Form/Buffer	Mouse IgG2b. Liquid in PBS, pH 7.3, 30% glycerol, and 0.01% sodium azide.
Alternative Names	CARD12; CLAN; CLAN1; IPAF; NLR family CARD domain-containing protein 4; CARD, LRR, and NACHT-containing protein; Clan protein; Caspase recruitment domain-containing protein 12; IC,e protease-activating factor; Ipaf
Gene Symbol	NLRC4
Entrez Gene	58484(Human); 298784(Rat)
SwissProt	Q9NPP4(Human); Q3UP24(Mouse)

*AREX continuously optimizes our products. Webpage content may not reflect the latest updates. For inquiries, please contact info@arexbio.com or your local distributor.

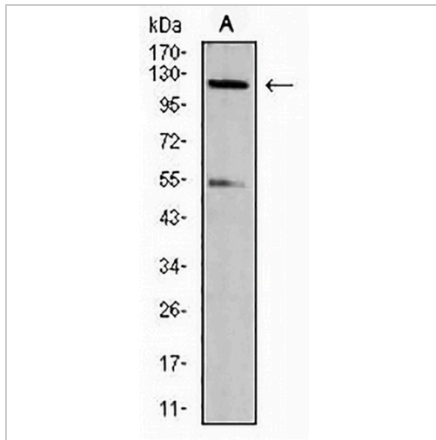
*Clone Number, Reactivity, Source/Host and Clonality can be found in the product name and Key Features section above.

DATASHEET

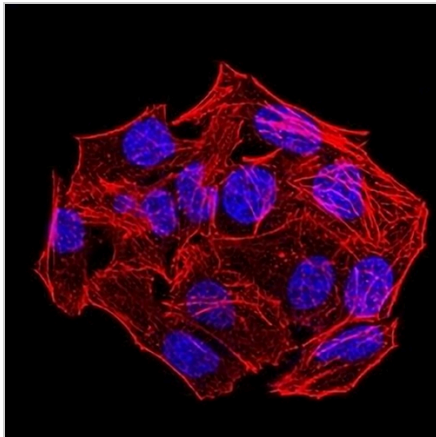
CARD12 (Phospho-S533) Rat Monoclonal Antibody(C2874)

CAT. NO. AMA02486

DATA



Western blot analysis of CARD12 (Phospho-S533) expression in NIH/3T3 (A) whole cell lysates. (Predicted band size: 117 kD; Observed band size: 117 kD)



Immunofluorescent analysis of CARD12 (Phospho-S533) staining in HeLa cells. Formalin-fixed cells were permeabilized with 0.1% Triton X-100 in TBS for 5-10 minutes and blocked with 3% BSA-PBS for 30 minutes at room temperature. Cells were probed with the primary antibody in 3% BSA-PBS and incubated overnight at 4 °C in a humidified chamber. Cells were washed with PBST and incubated with an AREX® Fluor 488 - conjugated secondary antibody (green) in PBS at room temperature in the dark. Phalloidin - AREX® Fluor 594 was used to stain Actin filaments (red). DAPI was used to stain the cell nuclei (blue).

STORAGE

Store at 4°C short term. For long term storage, store at -20°C, avoiding freeze/thaw cycles.

NOTE

For Research Use Only. Not for diagnostic, therapeutics, prophylactic or in vivo use.