

## DATASHEET

# NR6A1 Mouse Monoclonal Antibody(C2876)

CAT. NO. AMA02488

### KEY FEATURES

Target	NR6A1	Source / Host	Mouse
Reactivity	Human	Clonality	Monoclonal
Applications	WB, IHC, IF/ICC, FC	Conjugation	Unconjugated
Form / Buffer	Mouse IgG1. Liquid in PBS, pH 7.3, 30% glycerol, and 0.01% sodium azide.	Storage	at-20°C

### BACKGROUND

Orphan nuclear receptor that binds to a response element containing the sequence 5'-TCAAGGTCA-3'. Acts as a regulator of embryonic stem cell pluripotency by mediating repression of POU5F1/OCT4: binds to the DR0 element within the POU5F1/OCT4 promoter and inhibits POU5F1/OCT4 expression during embryonic stem cell differentiation. Involved in the regulation of gene expression in germ cell development during gametogenesis.

### APPLICATION

To ensure optimal assay performance, AREX recommends conducting reagent titration tailored to each testing system for optimal detection results.

WB	1:500 - 1:1000
IHC	1:100 - 1:500
IF/ICC	1:50 - 1:200
FC	1:100 - 1:200

\*Results are sample-specific. Please refer to your local assay conditions and test parameters for reference.

### PRODUCT OVERVIEW

Description	Mouse monoclonal to NR6A1
Specificity	Recognizes endogenous levels of NR6A1 protein
Antibody Type	Primary antibody
Immunogen	Recombinant fusion protein of human NR6A1 expressed in E. Coli
Purification	This antibody is purified through a protein G column.
Molecular Weight	Predicted: 54 kD; Observed: 54 kD
Form/Buffer	Mouse IgG1. Liquid in PBS, pH 7.3, 30% glycerol, and 0.01% sodium azide.
Alternative Names	GCNF; Nuclear receptor subfamily 6 group A member 1; Germ cell nuclear factor; GCNF; hGCNF; Retinoid receptor-related testis-specific, receptor; RTR; hRTR
Gene Symbol	NR6A1
Entrez Gene	2649(Human)
SwissProt	Q15406(Human)

\*AREX continuously optimizes our products. Webpage content may not reflect the latest updates. For inquiries, please contact [info@arexbio.com](mailto:info@arexbio.com) or your local distributor.

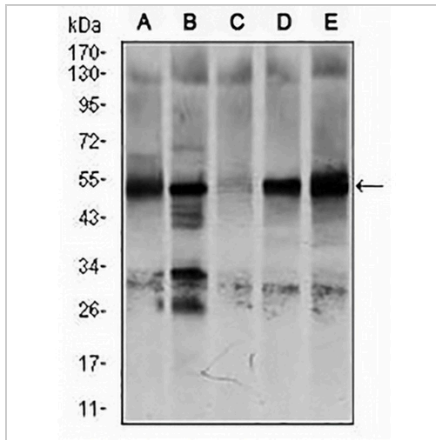
\*Clone Number, Reactivity, Source/Host and Clonality can be found in the product name and Key Features section above.

**DATASHEET**

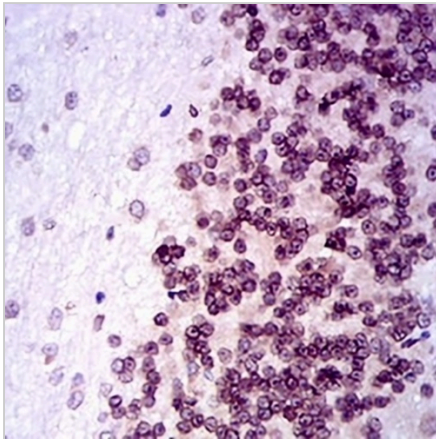
**NR6A1 Mouse Monoclonal Antibody(C2876)**

CAT. NO. AMA02488

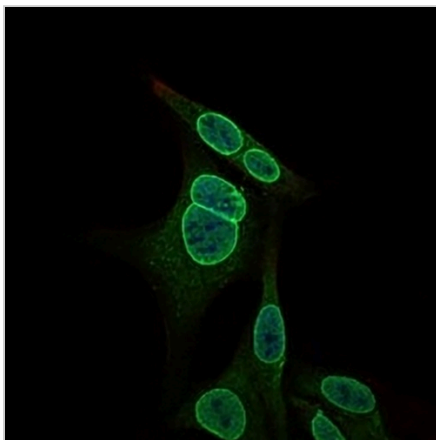
**DATA**



Western blot analysis of NR6A1 expression in K562 (A), NTERA2 (B), HEK293 (C), HUVE12 (D), HeLa (E) whole cell lysates. (Predicted band size: 54 kD; Observed band size: 54 kD)



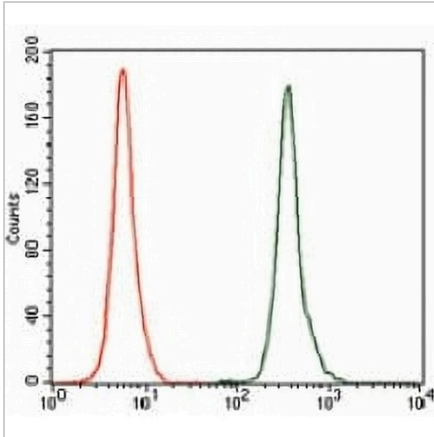
Immunohistochemical analysis of NR6A1 staining in human cerebellum formalin fixed paraffin embedded tissue section. The section was pre-treated using heat mediated antigen retrieval with sodium citrate buffer (pH 6.0). The section was then incubated with the antibody at room temperature and detected using an HRP conjugated compact polymer system. DAB was used as the chromogen. The section was then counterstained with haematoxylin and mounted with DPX.



Immunofluorescent analysis of NR6A1 staining in HepG2 cells. Formalin-fixed cells were permeabilized with 0.1% Triton X-100 in TBS for 5-10 minutes and blocked with 3% BSA-PBS for 30 minutes at room temperature. Cells were probed with the primary antibody in 3% BSA-PBS and incubated overnight at 4 °C in a humidified chamber. Cells were washed with PBST and incubated with an AREX® Fluor 488 -conjugated secondary antibody (green) in PBS at room temperature in the dark. Phalloidin - AREX® Fluor 594 was used to stain Actin filaments (red). DAPI was used to stain the cell nuclei (blue).

**DATASHEET****NR6A1 Mouse Monoclonal Antibody(C2876)**

CAT. NO. AMA02488

**DATA (CONTINUED)**

Flow cytometric analysis of K562 cells using Anti-NR6A1 Antibody (green) and negative control (red).

**STORAGE**

Store at 4°C short term. For long term storage, store at -20°C, avoiding freeze/thaw cycles.

**NOTE**

For Research Use Only. Not for diagnostic, therapeutics, prophylactic or in vivo use.