

DATASHEET

P2Y12 Mouse Monoclonal Antibody(C2884)

CAT. NO. AMA02496

KEY FEATURES

Target	P2Y12	Source / Host	Mouse
Reactivity	Human	Clonality	Monoclonal
Applications	WB, FC	Conjugation	Unconjugated
Form / Buffer	Mouse IgG1. Liquid in PBS, pH 7.3, 30% glycerol, and 0.01% sodium azide.	Storage	at-20°C

BACKGROUND

Receptor for ADP and ATP coupled to G-proteins that inhibit the adenylyl cyclase second messenger system. Not activated by UDP and UTP. Required for normal platelet aggregation and blood coagulation.

APPLICATION

To ensure optimal assay performance, AREX recommends conducting reagent titration tailored to each testing system for optimal detection results.

WB	1:500 - 1:1000
FC	1:100 - 1:200

*Results are sample-specific. Please refer to your local assay conditions and test parameters for reference.

PRODUCT OVERVIEW

Description	Mouse monoclonal to P2Y12
Specificity	Recognizes endogenous levels of P2Y12 protein
Antibody Type	Primary antibody
Immunogen	Recombinant fusion protein of human P2Y12 expressed in E. Coli
Purification	This antibody is purified through a protein G column.
Molecular Weight	Predicted: 39 kD; Observed: 50 kD kD
Form/Buffer	Mouse IgG1. Liquid in PBS, pH 7.3, 30% glycerol, and 0.01% sodium azide.
Alternative Names	HORK3; P2Y purinoceptor 12; P2Y12; ADP-glucose receptor; ADPG-R; P2T(AC); P2Y(AC); P2Y(cyc); P2Y12 platelet ADP receptor; P2Y(ADP); SP1999
Gene Symbol	P2RY12
Entrez Gene	64805(Human)
SwissProt	Q9H244(Human)

*AREX continuously optimizes our products. Webpage content may not reflect the latest updates. For inquiries, please contact info@arexbio.com or your local distributor.

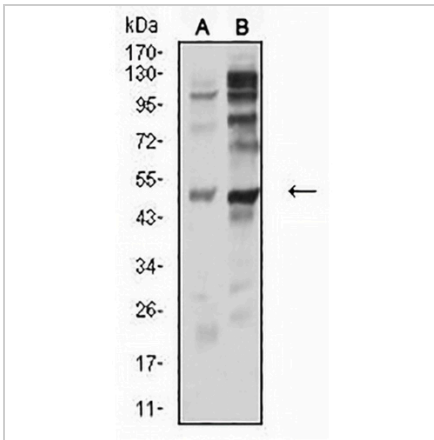
*Clone Number, Reactivity, Source/Host and Clonality can be found in the product name and Key Features section above.

DATASHEET

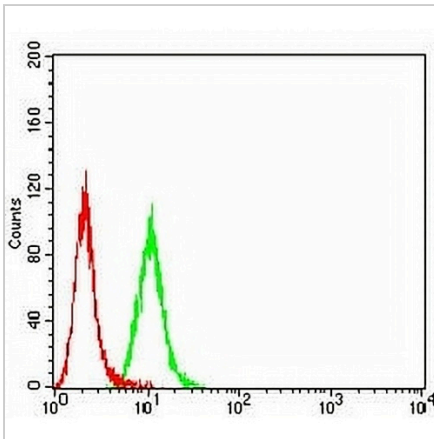
P2Y12 Mouse Monoclonal Antibody(C2884)

CAT. NO. AMA02496

DATA



Western blot analysis of P2Y12 expression in PC3 (A), C6 (B) whole cell lysates. (Predicted band size: 39 kD; Observed band size: 50 kD)



Flow cytometric analysis of HeLa cells using Anti-P2Y12 Antibody (green) and negative control (red).

STORAGE

Store at 4°C short term. For long term storage, store at -20°C, avoiding freeze/thaw cycles.

NOTE

For Research Use Only. Not for diagnostic, therapeutics, prophylactic or in vivo use.