

DATASHEET

PAPLN Mouse Monoclonal Antibody(C2888)

CAT. NO. AMA02500

KEY FEATURES

Target	PAPLN	Source / Host	Mouse
Reactivity	Human, Mouse	Clonality	Monoclonal
Applications	WB, IF/ICC	Conjugation	Unconjugated
Form / Buffer	Mouse IgG1. Liquid in PBS, pH 7.3, 30% glycerol, and 0.01% sodium azide.	Storage	at-20°C

BACKGROUND

Papilin (PAPLN). Belongs to the papilin family Subcellular location: Secreted

APPLICATION

To ensure optimal assay performance, AREX recommends conducting reagent titration tailored to each testing system for optimal detection results.

WB	1:500 - 1:1000
IF/ICC	1:100 - 1:500

*Results are sample-specific. Please refer to your local assay conditions and test parameters for reference.

PRODUCT OVERVIEW

Description	Mouse monoclonal to PAPLN
Specificity	Recognizes endogenous levels of PAPLN protein
Antibody Type	Primary antibody
Immunogen	Recombinant fusion protein of human PAPLN expressed in E. Coli
Purification	This antibody is purified through a protein G column.
Molecular Weight	Predicted: 138 kD; Observed: 115 kD kD
Form/Buffer	Mouse IgG1. Liquid in PBS, pH 7.3, 30% glycerol, and 0.01% sodium azide.
Alternative Names	Papilin
Gene Symbol	PAPLN
Entrez Gene	89932(Human)
SwissProt	O95428(Human); Q9EPX2(Mouse)

*AREX continuously optimizes our products. Webpage content may not reflect the latest updates. For inquiries, please contact info@arexbio.com or your local distributor.

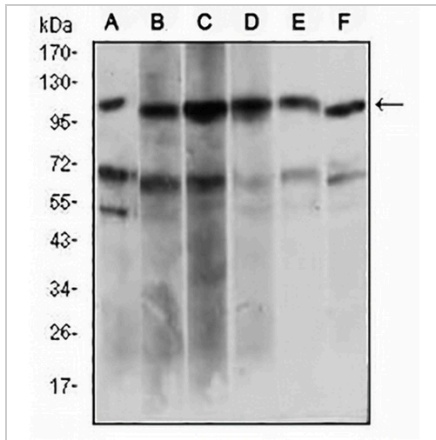
*Clone Number, Reactivity, Source/Host and Clonality can be found in the product name and Key Features section above.

DATASHEET

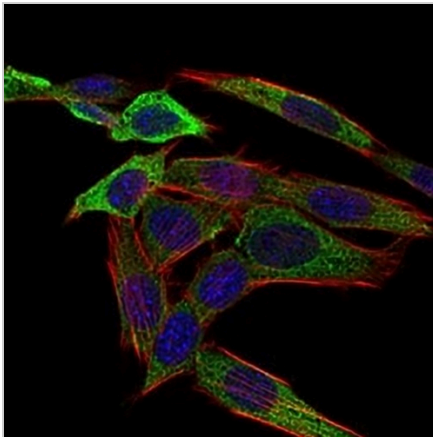
PAPLN Mouse Monoclonal Antibody(C2888)

CAT. NO. AMA02500

DATA



Western blot analysis of PAPLN expression in Hela (A), HepG2 (B), OCM1 (C), Raji (D), Jurkat (E), NIH/3T3 (F) whole cell lysates. (Predicted band size: 138 kD; Observed band size: 115 kD)



Immunofluorescent analysis of PAPLN staining in NIH3T3 cells. Formalin-fixed cells were permeabilized with 0.1% Triton X-100 in TBS for 5-10 minutes and blocked with 3% BSA-PBS for 30 minutes at room temperature. Cells were probed with the primary antibody in 3% BSA-PBS and incubated overnight at 4 °C in a humidified chamber. Cells were washed with PBST and incubated with an AREX® Fluor 488 -conjugated secondary antibody (green) in PBS at room temperature in the dark. Phalloidin - AREX® Fluor 594 was used to stain Actin filaments (red). DAPI was used to stain the cell nuclei (blue).

STORAGE

Store at 4°C short term. For long term storage, store at -20°C, avoiding freeze/thaw cycles.

NOTE

For Research Use Only. Not for diagnostic, therapeutics, prophylactic or in vivo use.