

## DATASHEET

# CD279 Mouse Monoclonal Antibody(C2896)

CAT. NO. AMA02508

### KEY FEATURES

Target	CD279	Source / Host	Mouse
Reactivity	Human	Clonality	Monoclonal
Applications	WB, FC	Conjugation	Unconjugated
Form / Buffer	Mouse IgG1. Liquid in PBS, pH 7.3, 30% glycerol, and 0.01% sodium azide.	Storage	at-20°C

### BACKGROUND

Inhibitory receptor on antigen activated T-cells that plays a critical role in induction and maintenance of immune tolerance to self. Delivers inhibitory signals upon binding to ligands CD274/PDCD1L1 and CD273/PDCD1LG2. Following T-cell receptor (TCR) engagement, PDCD1 associates with TCR-CD3 in the immunological synapse and directly inhibits T-cell activation. Suppresses T-cell activation through the recruitment of PTPN11/SHP-2: following ligand-binding, PDCD1 is phosphorylated within the ITSM motif, leading to the recruitment of the protein tyrosine phosphatase PTPN11/SHP-2 that mediates dephosphorylation of key TCR proximal signaling molecules, such as ZAP70, PRKCQ/PKCtheta and CD247/CD3zeta.

### APPLICATION

To ensure optimal assay performance, AREX recommends conducting reagent titration tailored to each testing system for optimal detection results.

WB	1:500 - 1:1000
FC	1:100 - 1:200

\*Results are sample-specific. Please refer to your local assay conditions and test parameters for reference.

### PRODUCT OVERVIEW

Description	Mouse monoclonal to CD279
Specificity	Recognizes endogenous levels of CD279 protein
Antibody Type	Primary antibody
Immunogen	Recombinant fusion protein of human CD279 expressed in HEK293
Purification	This antibody is purified through a protein G column.
Molecular Weight	Predicted: 32 kD; Observed: 80 kD
Form/Buffer	Mouse IgG1. Liquid in PBS, pH 7.3, 30% glycerol, and 0.01% sodium azide.
Alternative Names	PD1; Programmed cell death protein 1; Protein PD-1; hPD-1; CD279
Gene Symbol	PDCD1
Entrez Gene	5133(Human)
SwissProt	Q15116(Human)

\*AREX continuously optimizes our products. Webpage content may not reflect the latest updates. For inquiries, please contact [info@arexbio.com](mailto:info@arexbio.com) or your local distributor.

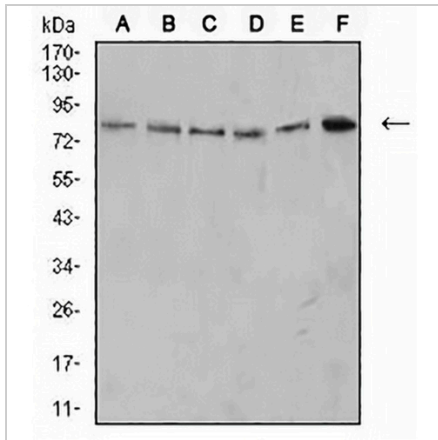
\*Clone Number, Reactivity, Source/Host and Clonality can be found in the product name and Key Features section above.

**DATASHEET**

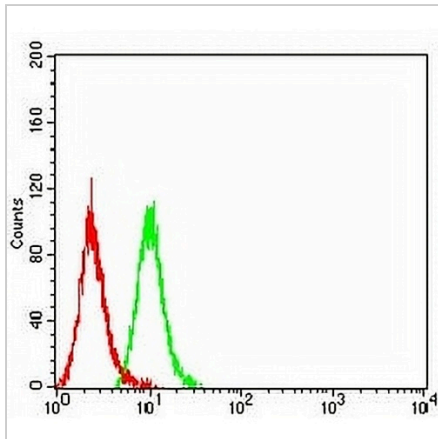
**CD279 Mouse Monoclonal Antibody(C2896)**

CAT. NO. AMA02508

**DATA**



Western blot analysis of CD279 expression in MOLT4 (A), K562 (B), Ramos (C), HL60 (D), THP1 (E), U937 (F) whole cell lysates. (Predicted band size: 32 kD; Observed band size: 80 kD)



Flow cytometric analysis of HeLa cells using Anti-CD279 Antibody (green) and negative control (red).

**STORAGE**

Store at 4°C short term. For long term storage, store at -20°C, avoiding freeze/thaw cycles.

**NOTE**

For Research Use Only. Not for diagnostic, therapeutics, prophylactic or in vivo use.