

DATASHEET

RAB11FIP1 Mouse Monoclonal Antibody(C2925)

CAT. NO. AMA02537

KEY FEATURES

Target	RAB11FIP1	Source / Host	Mouse
Reactivity	Human, Mouse	Clonality	Monoclonal
Applications	WB, IHC, IF/ICC, FC	Conjugation	Unconjugated
Form / Buffer	Mouse IgG1. Liquid in PBS, pH 7.3, 30% glycerol, and 0.01% sodium azide.	Storage	at-20°C

BACKGROUND

A Rab11 effector protein involved in the endosomal recycling process. Also involved in controlling membrane trafficking along the phagocytic pathway and in phagocytosis. Interaction with RAB14 may function in the process of neurite formation .

APPLICATION

To ensure optimal assay performance, AREX recommends conducting reagent titration tailored to each testing system for optimal detection results.

WB	1:500 - 1:1000
IHC	1:100 - 1:500
IF/ICC	1:100 - 1:500
FC	1:100 - 1:200

*Results are sample-specific. Please refer to your local assay conditions and test parameters for reference.

PRODUCT OVERVIEW

Description	Mouse monoclonal to RAB11FIP1
Specificity	Recognizes endogenous levels of RAB11FIP1 protein
Antibody Type	Primary antibody
Immunogen	Recombinant fusion protein of human RAB11FIP1 expressed in E. Coli
Purification	This antibody is purified through a protein G column.
Molecular Weight	Predicted: 137 kD; Observed: 105 kD kD
Form/Buffer	Mouse IgG1. Liquid in PBS, pH 7.3, 30% glycerol, and 0.01% sodium azide.
Alternative Names	RCP; Rab11 family-interacting protein 1; Rab11-FIP1; Rab-coupling protein
Gene Symbol	RAB11FIP1
Entrez Gene	80223(Human); 498650(Rat)
SwissProt	Q6WKZ4(Human); Q9D620(Mouse)

*AREX continuously optimizes our products. Webpage content may not reflect the latest updates. For inquiries, please contact info@arexbio.com or your local distributor.

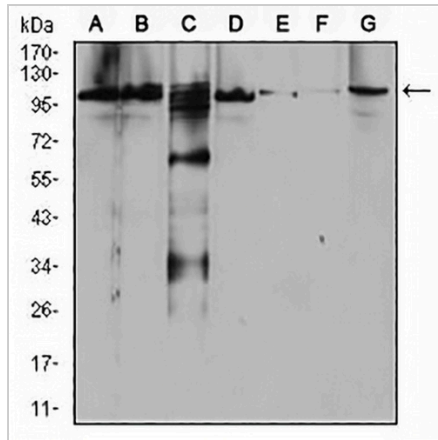
*Clone Number, Reactivity, Source/Host and Clonality can be found in the product name and Key Features section above.

DATASHEET

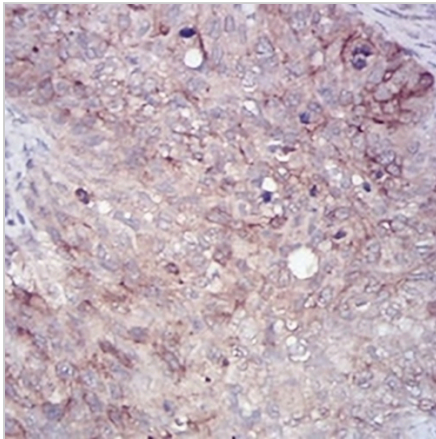
RAB11FIP1 Mouse Monoclonal Antibody(C2925)

CAT. NO. AMA02537

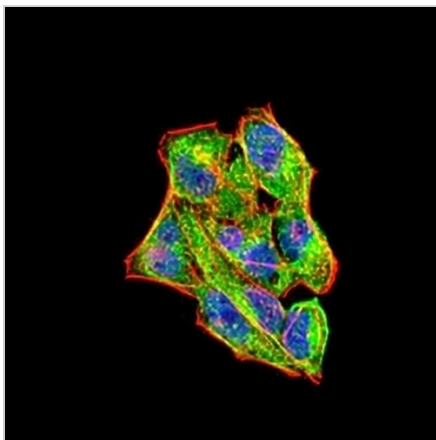
DATA



Western blot analysis of RAB11FIP1 expression in Raji (A), SW620 (B), A431 (C), SW480 (D), HepG2 (E), Hela (F), NIH3T3 (G) whole cell lysates. (Predicted band size: 137 kD; Observed band size: 105 kD)



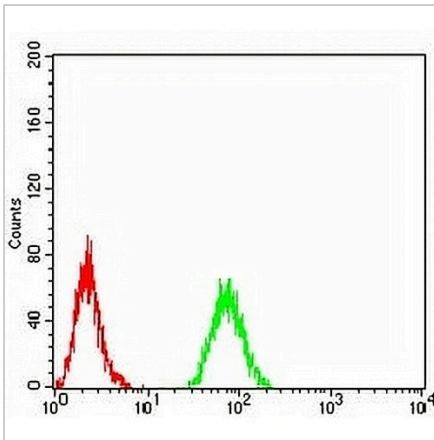
Immunohistochemical analysis of RAB11FIP1 staining in human cervical cancer formalin fixed paraffin embedded tissue section. The section was pre-treated using heat mediated antigen retrieval with sodium citrate buffer (pH 6.0). The section was then incubated with the antibody at room temperature and detected using an HRP conjugated compact polymer system. DAB was used as the chromogen. The section was then counterstained with haematoxylin and mounted with DPX.



Immunofluorescent analysis of RAB11FIP1 staining in Hela cells. Formalin-fixed cells were permeabilized with 0.1% Triton X-100 in TBS for 5-10 minutes and blocked with 3% BSA-PBS for 30 minutes at room temperature. Cells were probed with the primary antibody in 3% BSA-PBS and incubated overnight at 4 °C in a humidified chamber. Cells were washed with PBST and incubated with an AREX® Fluor 488 -conjugated secondary antibody (green) in PBS at room temperature in the dark. Phalloidin - AREX® Fluor 594 was used to stain Actin filaments (red). DAPI was used to stain the cell nuclei (blue).

DATASHEET**RAB11FIP1 Mouse Monoclonal Antibody(C2925)**

CAT. NO. AMA02537

DATA (CONTINUED)

Flow cytometric analysis of Raji cells using Anti-RAB11FIP1 Antibody (green) and negative control (red).

STORAGE

Store at 4°C short term. For long term storage, store at -20°C, avoiding freeze/thaw cycles.

NOTE

For Research Use Only. Not for diagnostic, therapeutics, prophylactic or in vivo use.