

DATASHEET

RAD21 Mouse Monoclonal Antibody(C2929)

CAT. NO. AMA02541

KEY FEATURES

Target	RAD21	Source / Host	Mouse
Reactivity	Human, Rat, Monkey	Clonality	Monoclonal
Applications	WB, IHC, IF/ICC, FC	Conjugation	Unconjugated
Form / Buffer	Mouse IgG1. Liquid in PBS, pH 7.3, 30% glycerol, and 0.01% sodium azide.	Storage	at-20°C

BACKGROUND

As a member of the cohesin complex, involved in sister chromatid cohesion from the time of DNA replication in S phase to their segregation in mitosis, a function that is essential for proper chromosome segregation, post-replicative DNA repair, and the prevention of inappropriate recombination between repetitive regions . The cohesin complex may also play a role in spindle pole assembly during mitosis . In interphase, cohesins may function in the control of gene expression by binding to numerous sites within the genome . May control RUNX1 gene expression (Probable). Binds to and represses APOB gene promoter . May play a role in embryonic gut development, possibly through the regulation of enteric neuron development .

APPLICATION

To ensure optimal assay performance, AREX recommends conducting reagent titration tailored to each testing system for optimal detection results.

WB	1:500 - 1:1000
IHC	1:100 - 1:500
IF/ICC	1:100 - 1:500
FC	1:100 - 1:200

*Results are sample-specific. Please refer to your local assay conditions and test parameters for reference.

PRODUCT OVERVIEW

Description	Mouse monoclonal to RAD21
Specificity	Recognizes endogenous levels of RAD21 protein
Antibody Type	Primary antibody
Immunogen	Recombinant fusion protein of human RAD21 expressed in E. Coli
Purification	This antibody is purified through a protein G column.
Molecular Weight	Predicted: 72 kD; Observed: 72 kD
Form/Buffer	Mouse IgG1. Liquid in PBS, pH 7.3, 30% glycerol, and 0.01% sodium azide.
Alternative Names	HR21; KIAA0078; NXP1; Double-strand-break repair protein rad21 homolog; hHR21; Nuclear matrix protein 1; NXP-1; SCC1 homolog
Gene Symbol	RAD21
Entrez Gene	5885(Human)
SwissProt	O60216(Human)

*AREX continuously optimizes our products. Webpage content may not reflect the latest updates. For inquiries, please contact info@arexbio.com or your local distributor.

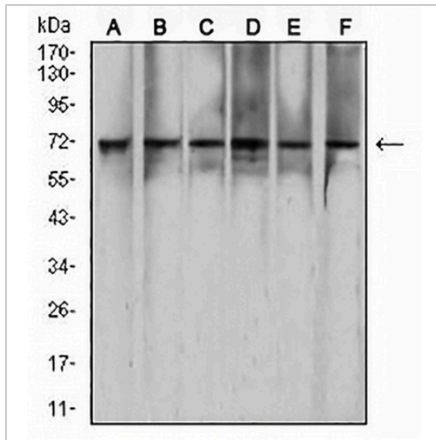
*Clone Number, Reactivity, Source/Host and Clonality can be found in the product name and Key Features section above.

DATASHEET

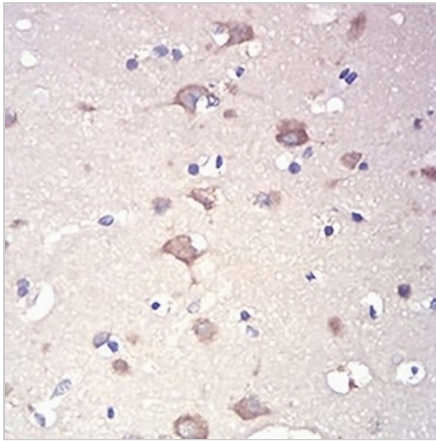
RAD21 Mouse Monoclonal Antibody(C2929)

CAT. NO. AMA02541

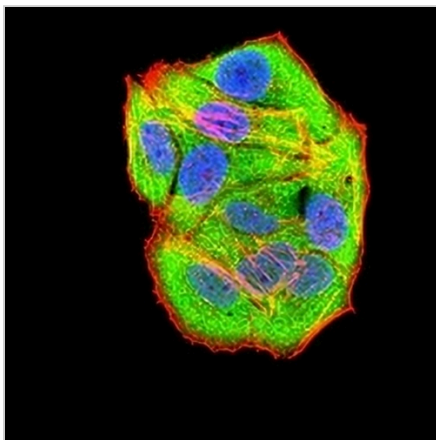
DATA



Western blot analysis of RAD21 expression in Hela (A), HEK293 (B), K562 (C), C6 (D), *** (E), COS7 (F) whole cell lysates. (Predicted band size: 72 kD; Observed band size: 72 kD)



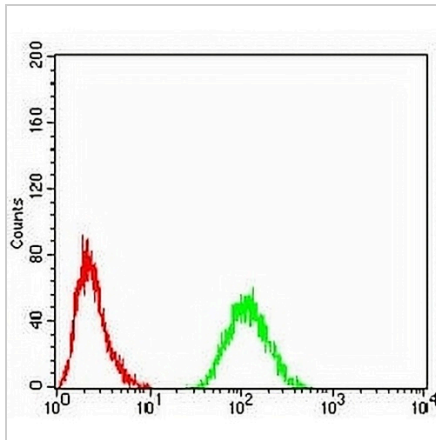
Immunohistochemical analysis of RAD21 staining in human brain formalin fixed paraffin embedded tissue section. The section was pre-treated using heat mediated antigen retrieval with sodium citrate buffer (pH 6.0). The section was then incubated with the antibody at room temperature and detected using an HRP conjugated compact polymer system. DAB was used as the chromogen. The section was then counterstained with haematoxylin and mounted with DPX.



Immunofluorescent analysis of RAD21 staining in HeLa cells. Formalin-fixed cells were permeabilized with 0.1% Triton X-100 in TBS for 5-10 minutes and blocked with 3% BSA-PBS for 30 minutes at room temperature. Cells were probed with the primary antibody in 3% BSA-PBS and incubated overnight at 4 °C in a humidified chamber. Cells were washed with PBST and incubated with an AREX® Fluor 488 -conjugated secondary antibody (green) in PBS at room temperature in the dark. Phalloidin - AREX® Fluor 594 was used to stain Actin filaments (red). DAPI was used to stain the cell nuclei (blue).

DATASHEET**RAD21 Mouse Monoclonal Antibody(C2929)**

CAT. NO. AMA02541

DATA (CONTINUED)

Flow cytometric analysis of HeLa cells using Anti-RAD21 Antibody (green) and negative control (red).

STORAGE

Store at 4°C short term. For long term storage, store at -20°C, avoiding freeze/thaw cycles.

NOTE

For Research Use Only. Not for diagnostic, therapeutics, prophylactic or in vivo use.