

DATASHEET

c-RAF Mouse Monoclonal Antibody(C2933)

CAT. NO. AMA02545

KEY FEATURES

Target	c-RAF	Source / Host	Mouse
Reactivity	Human	Clonality	Monoclonal
Applications	WB, IHC, FC	Conjugation	Unconjugated
Form / Buffer	Mouse IgG1. Liquid in PBS, pH 7.3, 30% glycerol, and 0.01% sodium azide.	Storage	at-20°C

BACKGROUND

Serine/threonine-protein kinase that acts as a regulatory link between the membrane-associated Ras GTPases and the MAPK/ERK cascade, and this critical regulatory link functions as a switch determining cell fate decisions including proliferation, differentiation, apoptosis, survival and oncogenic transformation. RAF1 activation initiates a mitogen-activated protein kinase (MAPK) cascade that comprises a sequential phosphorylation of the dual-specific MAPK kinases (MAP2K1/MEK1 and MAP2K2/MEK2) and the extracellular signal-regulated kinases (MAPK3/ERK1 and MAPK1/ERK2). The phosphorylated form of RAF1 (on residues Ser-338 and Ser-339, by PAK1) phosphorylates BAD/Bcl2-antagonist of cell death at 'Ser-75'. Phosphorylates adenylyl cyclases: ADCY2, ADCY5 and ADCY6, resulting in their activation.

APPLICATION

To ensure optimal assay performance, AREX recommends conducting reagent titration tailored to each testing system for optimal detection results.

WB	1:500 - 1:1000
IHC	1:100 - 1:500
FC	1:100 - 1:200

*Results are sample-specific. Please refer to your local assay conditions and test parameters for reference.

PRODUCT OVERVIEW

Description	Mouse monoclonal to c-RAF
Specificity	Recognizes endogenous levels of c-RAF protein
Antibody Type	Primary antibody
Immunogen	Recombinant fusion protein of human c-RAF expressed in E. Coli
Purification	This antibody is purified through a protein G column.
Molecular Weight	Predicted: 73 kD; Observed: 73 kD
Form/Buffer	Mouse IgG1. Liquid in PBS, pH 7.3, 30% glycerol, and 0.01% sodium azide.
Alternative Names	RAF; RAF proto-oncogene serine/threonine-protein kinase; Proto-oncogene c-RAF; cRaf; Raf-1
Gene Symbol	RAF1
Entrez Gene	5894(Human)
SwissProt	P04049(Human)

*AREX continuously optimizes our products. Webpage content may not reflect the latest updates. For inquiries, please contact info@arexbio.com or your local distributor.

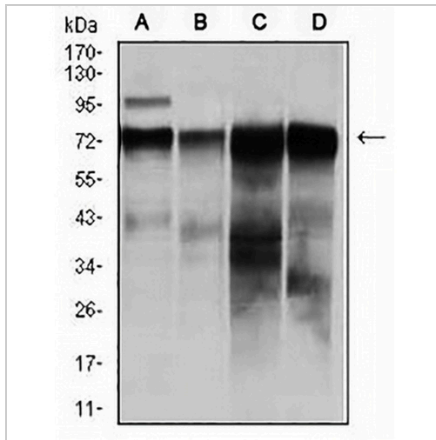
*Clone Number, Reactivity, Source/Host and Clonality can be found in the product name and Key Features section above.

DATASHEET

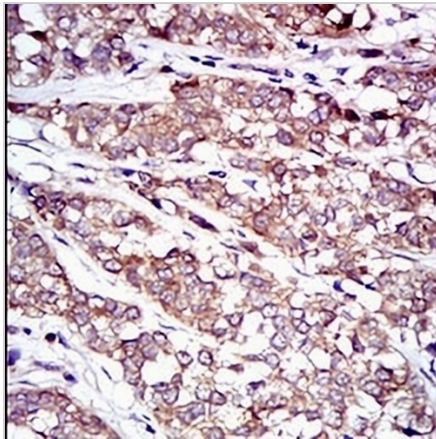
c-RAF Mouse Monoclonal Antibody(C2933)

CAT. NO. AMA02545

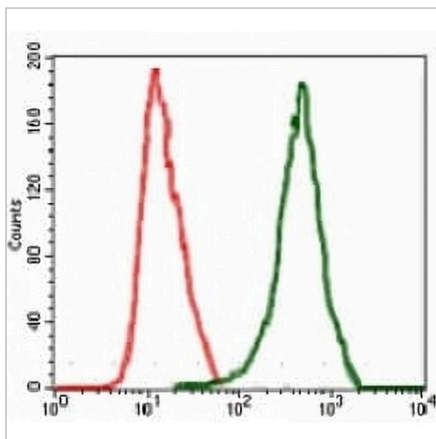
DATA



Western blot analysis of c-RAF expression in Hela (A), A431 (B), HepG (C), SW620 (D) whole cell lysates. (Predicted band size: 73 kD; Observed band size: 73 kD)



Immunohistochemical analysis of c-RAF staining in human bladder cancer formalin fixed paraffin embedded tissue section. The section was pre-treated using heat mediated antigen retrieval with sodium citrate buffer (pH 6.0). The section was then incubated with the antibody at room temperature and detected using an HRP conjugated compact polymer system. DAB was used as the chromogen. The section was then counterstained with haematoxylin and mounted with DPX.



Flow cytometric analysis of MCF7 cells using Anti-c-RAF Antibody (green) and negative control (red).

STORAGE

Store at 4°C short term. For long term storage, store at -20°C, avoiding freeze/thaw cycles.

NOTE

For Research Use Only. Not for diagnostic, therapeutics, prophylactic or in vivo use.