

DATASHEET

RALA Mouse Monoclonal Antibody(C2934)

CAT. NO. AMA02546

KEY FEATURES

Target	RALA	Source / Host	Mouse
Reactivity	Human, Mouse, Monkey	Clonality	Monoclonal
Applications	WB, IHC, IF/ICC, FC	Conjugation	Unconjugated
Form / Buffer	Mouse IgG1. Liquid in PBS, pH 7.3, 30% glycerol, and 0.01% sodium azide.	Storage	at-20°C

BACKGROUND

Multifunctional GTPase involved in a variety of cellular processes including gene expression, cell migration, cell proliferation, oncogenic transformation and membrane trafficking. Accomplishes its multiple functions by interacting with distinct downstream effectors. Acts as a GTP sensor for GTP-dependent exocytosis of dense core vesicles. The RALA-exocyst complex regulates integrin-dependent membrane raft exocytosis and growth signaling. Key regulator of LPAR1 signaling and competes with GRK2 for binding to LPAR1 thus affecting the signaling properties of the receptor. Required for anchorage-independent proliferation of transformed cells. During mitosis, supports the stabilization and elongation of the intracellular bridge between dividing cells.

APPLICATION

To ensure optimal assay performance, AREX recommends conducting reagent titration tailored to each testing system for optimal detection results.

WB	1:500 - 1:1000
IHC	1:100 - 1:500
IF/ICC	1:100 - 1:500
FC	1:100 - 1:200

*Results are sample-specific. Please refer to your local assay conditions and test parameters for reference.

PRODUCT OVERVIEW

Description	Mouse monoclonal to RALA
Specificity	Recognizes endogenous levels of RALA protein
Antibody Type	Primary antibody
Immunogen	Recombinant fusion protein of human RALA expressed in E. Coli
Purification	This antibody is purified through a protein G column.
Molecular Weight	Predicted: 24 kD; Observed: 25 kD
Form/Buffer	Mouse IgG1. Liquid in PBS, pH 7.3, 30% glycerol, and 0.01% sodium azide.
Alternative Names	RAL; Ras-related protein Ral-A
Gene Symbol	RALA
Entrez Gene	5898(Human); 81757(Rat)
SwissProt	P11233(Human); P63321(Mouse)

*AREX continuously optimizes our products. Webpage content may not reflect the latest updates. For inquiries, please contact info@arexbio.com or your local distributor.

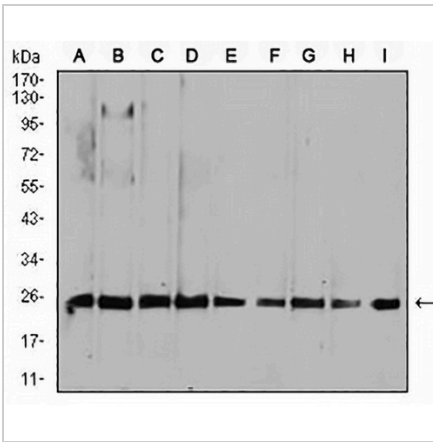
*Clone Number, Reactivity, Source/Host and Clonality can be found in the product name and Key Features section above.

DATASHEET

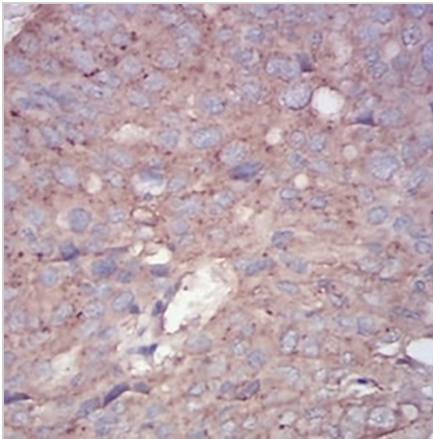
RALA Mouse Monoclonal Antibody(C2934)

CAT. NO. AMA02546

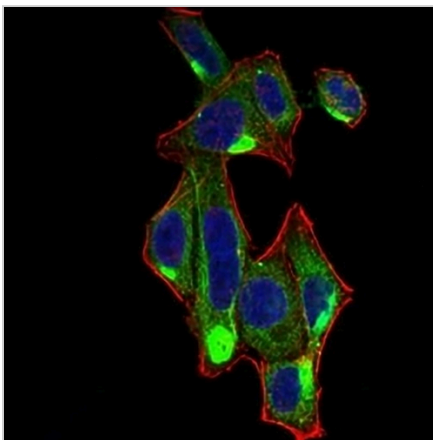
DATA



Western blot analysis of RALA expression in HepG2 (A), MCF7 (B), A549 (C), K562 (D), Raji (E), MOLT4 (F), HeLa (G), COS7 (H), NIH3T3 (I) whole cell lysates. (Predicted band size: 24 kD; Observed band size: 25 kD)



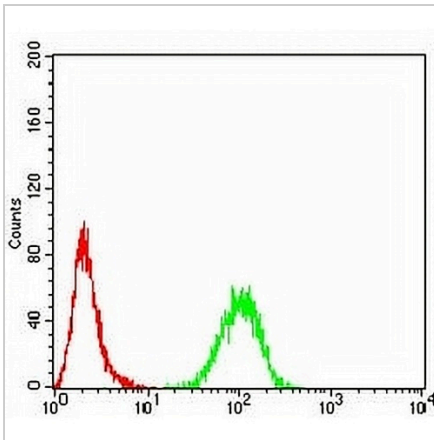
Immunohistochemical analysis of RALA staining in human ovarian cancer formalin fixed paraffin embedded tissue section. The section was pre-treated using heat mediated antigen retrieval with sodium citrate buffer (pH 6.0). The section was then incubated with the antibody at room temperature and detected using an HRP conjugated compact polymer system. DAB was used as the chromogen. The section was then counterstained with haematoxylin and mounted with DPX.



Immunofluorescent analysis of RALA staining in HeLa cells. Formalin-fixed cells were permeabilized with 0.1% Triton X-100 in TBS for 5-10 minutes and blocked with 3% BSA-PBS for 30 minutes at room temperature. Cells were probed with the primary antibody in 3% BSA-PBS and incubated overnight at 4 °C in a humidified chamber. Cells were washed with PBST and incubated with an AREX® Fluor 488 -conjugated secondary antibody (green) in PBS at room temperature in the dark. Phalloidin - AREX® Fluor 594 was used to stain Actin filaments (red). DAPI was used to stain the cell nuclei (blue).

DATASHEET**RALA Mouse Monoclonal Antibody(C2934)**

CAT. NO. AMA02546

DATA (CONTINUED)

Flow cytometric analysis of MCF7 cells using Anti-RALA Antibody (green) and negative control (red).

STORAGE

Store at 4°C short term. For long term storage, store at -20°C, avoiding freeze/thaw cycles.

NOTE

For Research Use Only. Not for diagnostic, therapeutics, prophylactic or in vivo use.