

DATASHEET

RALB Mouse Monoclonal Antibody(C2935)

CAT. NO. AMA02547

KEY FEATURES

Target	RALB	Source / Host	Mouse
Reactivity	Human, Mouse, Monkey	Clonality	Monoclonal
Applications	WB, IHC, FC	Conjugation	Unconjugated
Form / Buffer	Mouse IgG2b. Liquid in PBS, pH 7.3, 30% glycerol, and 0.01% sodium azide.	Storage	at-20°C

BACKGROUND

Multifunctional GTPase involved in a variety of cellular processes including gene expression, cell migration, cell proliferation, oncogenic transformation and membrane trafficking . Accomplishes its multiple functions by interacting with distinct downstream effectors. Acts as a GTP sensor for GTP-dependent exocytosis of dense core vesicles . Required both to stabilize the assembly of the exocyst complex and to localize functional exocyst complexes to the leading edge of migrating cells . Required for suppression of apoptosis . In late stages of cytokinesis, upon completion of the bridge formation between dividing cells, mediates exocyst recruitment to the midbody to drive abscission . Involved in ligand-dependent receptor mediated endocytosis of the EGF and insulin receptors .

APPLICATION

To ensure optimal assay performance, AREX recommends conducting reagent titration tailored to each testing system for optimal detection results.

WB	1:500 - 1:1000
IHC	1:100 - 1:500
FC	1:100 - 1:200

*Results are sample-specific. Please refer to your local assay conditions and test parameters for reference.

PRODUCT OVERVIEW

Description	Mouse monoclonal to RALB
Specificity	Recognizes endogenous levels of RALB protein
Antibody Type	Primary antibody
Immunogen	Recombinant fusion protein of human RALB expressed in E. Coli
Purification	This antibody is purified through a protein G column.
Molecular Weight	Predicted: 23 kD; Observed: 23 kD kD
Form/Buffer	Mouse IgG2b. Liquid in PBS, pH 7.3, 30% glycerol, and 0.01% sodium azide.
Alternative Names	Ras-related protein Ral-B
Gene Symbol	RALB
Entrez Gene	5899(Human); 116546(Rat)
SwissProt	P11234(Human); Q9JIW9(Mouse)

*AREX continuously optimizes our products. Webpage content may not reflect the latest updates. For inquiries, please contact info@arexbio.com or your local distributor.

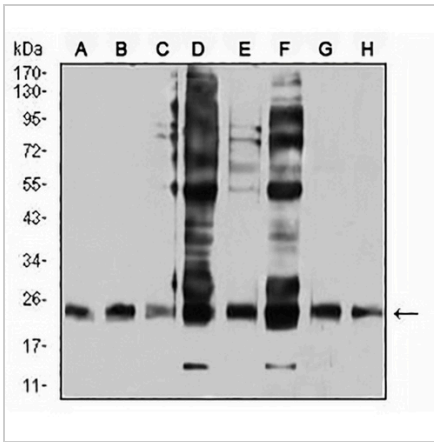
*Clone Number, Reactivity, Source/Host and Clonality can be found in the product name and Key Features section above.

DATASHEET

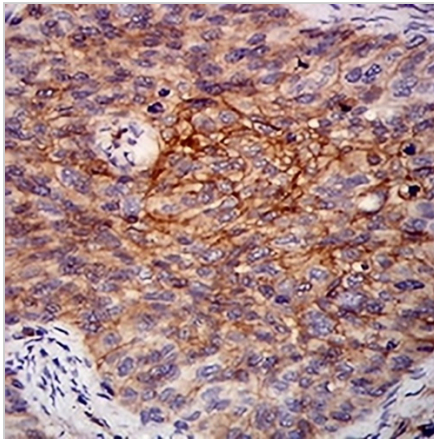
RALB Mouse Monoclonal Antibody(C2935)

CAT. NO. AMA02547

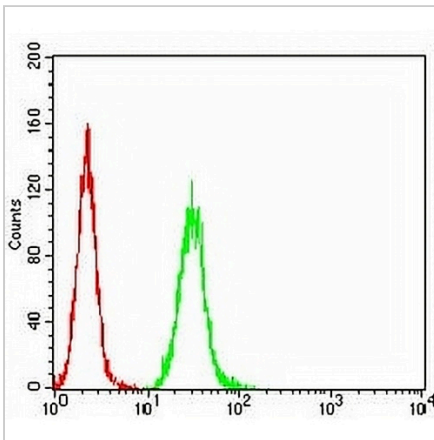
DATA



Western blot analysis of RALB expression in HepG2 (A), COS7 (B), NIH/3T3 (C), A549 (D), U251 (E), HT29 (F), HEK293 (G), LOVO (H) whole cell lysates. (Predicted band size: 23 kD; Observed band size: 23 kD)



Immunohistochemical analysis of RALB staining in human cervical cancer formalin fixed paraffin embedded tissue section. The section was pre-treated using heat mediated antigen retrieval with sodium citrate buffer (pH 6.0). The section was then incubated with the antibody at room temperature and detected using an HRP conjugated compact polymer system. DAB was used as the chromogen. The section was then counterstained with haematoxylin and mounted with DPX.



Flow cytometric analysis of HeLa cells using Anti-RALB Antibody (green) and negative control (red).

STORAGE

Store at 4°C short term. For long term storage, store at -20°C, avoiding freeze/thaw cycles.

NOTE

For Research Use Only. Not for diagnostic, therapeutics, prophylactic or in vivo use.