

DATASHEET

RbAp46 Mouse Monoclonal Antibody(C2939)

CAT. NO. AMA02551

KEY FEATURES

Target	RbAp46	Source / Host	Mouse
Reactivity	Human, Mouse, Rat	Clonality	Monoclonal
Applications	WB, IHC, IF/ICC, FC	Conjugation	Unconjugated
Form / Buffer	Mouse IgG1. Liquid in PBS, pH 7.3, 30% glycerol, and 0.01% sodium azide.	Storage	at-20°C

BACKGROUND

Core histone-binding subunit that may target chromatin remodeling factors, histone acetyltransferases and histone deacetylases to their histone substrates in a manner that is regulated by nucleosomal DNA. Component of several complexes which regulate chromatin metabolism.

APPLICATION

To ensure optimal assay performance, AREX recommends conducting reagent titration tailored to each testing system for optimal detection results.

WB	1:500 - 1:1000
IHC	1:100 - 1:500
IF/ICC	1:100 - 1:250
FC	1:100 - 1:200

*Results are sample-specific. Please refer to your local assay conditions and test parameters for reference.

PRODUCT OVERVIEW

Description	Mouse monoclonal to RbAp46
Specificity	Recognizes endogenous levels of RbAp46 protein
Antibody Type	Primary antibody
Immunogen	Recombinant fusion protein of human RbAp46 expressed in E. Coli
Purification	This antibody is purified through a protein G column.
Molecular Weight	Predicted: 48 kD; Observed: 45 kD kD
Form/Buffer	Mouse IgG1. Liquid in PBS, pH 7.3, 30% glycerol, and 0.01% sodium azide.
Alternative Names	RBAP46; Histone-binding protein RBBP7; Histone acetyltransferase type B subunit 2; Nucleosome-remodeling factor subunit RBAP46; Retinoblastoma-binding protein 7; RBBP-7; Retinoblastoma-binding protein p46
Gene Symbol	RBBP7
Entrez Gene	5931(Human); 245688(Mouse); 83712(Rat)
SwissProt	Q16576(Human); Q60973(Mouse); Q71UF4(Rat)

*AREX continuously optimizes our products. Webpage content may not reflect the latest updates. For inquiries, please contact info@arexbio.com or your local distributor.

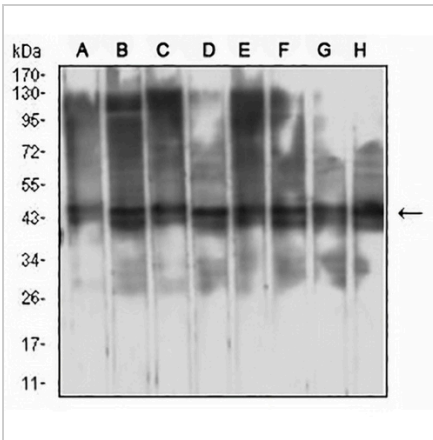
*Clone Number, Reactivity, Source/Host and Clonality can be found in the product name and Key Features section above.

DATASHEET

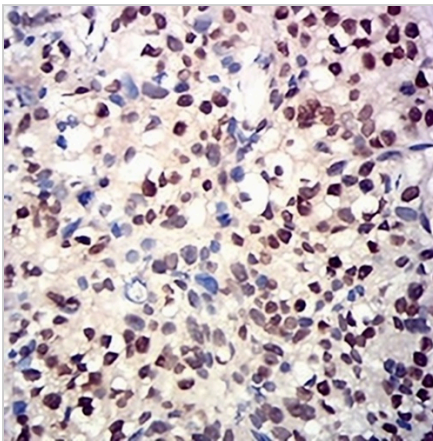
RbAp46 Mouse Monoclonal Antibody(C2939)

CAT. NO. AMA02551

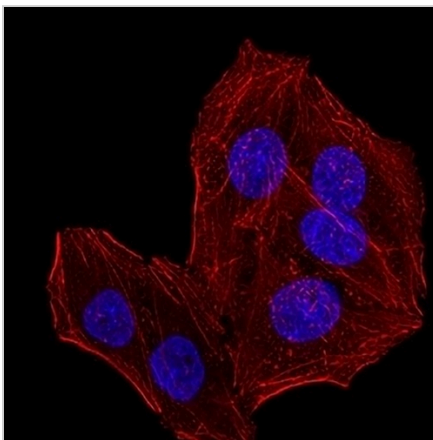
DATA



Western blot analysis of RbAp46 expression in Jurkat (A), HepG2 (B), F9 (C), C6 (D), LNCAP (E), HL60 (F), Hela (G), SHSY5Y (H) whole cell lysates. (Predicted band size: 48 kD; Observed band size: 45 kD kD)



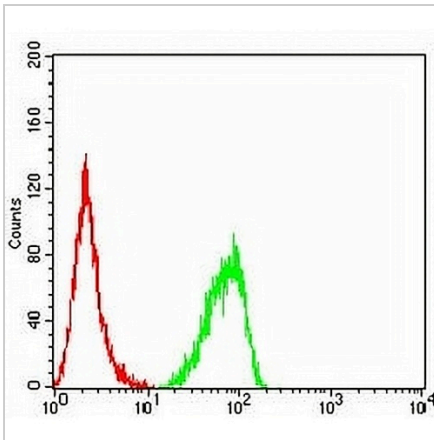
Immunohistochemical analysis of RbAp46 staining in human bladder cancer formalin fixed paraffin embedded tissue section. The section was pre-treated using heat mediated antigen retrieval with sodium citrate buffer (pH 6.0). The section was then incubated with the antibody at room temperature and detected using an HRP conjugated compact polymer system. DAB was used as the chromogen. The section was then counterstained with haematoxylin and mounted with DPX.



Immunofluorescent analysis of RbAp46 staining in Hela cells. Formalin-fixed cells were permeabilized with 0.1% Triton X-100 in TBS for 5-10 minutes and blocked with 3% BSA-PBS for 30 minutes at room temperature. Cells were probed with the primary antibody in 3% BSA-PBS and incubated overnight at 4 °C in a humidified chamber. Cells were washed with PBST and incubated with an AREX® Fluor 488 -conjugated secondary antibody (green) in PBS at room temperature in the dark. Phalloidin - AREX® Fluor 594 was used to stain Actin filaments (red). DAPI was used to stain the cell nuclei (blue).

DATASHEET**RbAp46 Mouse Monoclonal Antibody(C2939)**

CAT. NO. AMA02551

DATA (CONTINUED)

Flow cytometric analysis of HeLa cells using Anti-RbAp46 Antibody (green) and negative control (red).

STORAGE

Store at 4°C short term. For long term storage, store at -20°C, avoiding freeze/thaw cycles.

NOTE

For Research Use Only. Not for diagnostic, therapeutics, prophylactic or in vivo use.