

DATASHEET

RhoA Mouse Monoclonal Antibody(C2941)

CAT. NO. AMA02553

KEY FEATURES

Target	RhoA	Source / Host	Mouse
Reactivity	Human	Clonality	Monoclonal
Applications	WB, IHC, IF/ICC, FC	Conjugation	Unconjugated
Form / Buffer	Mouse IgG2b. Liquid in PBS, pH 7.3, 30% glycerol, and 0.01% sodium azide.	Storage	at-20°C

BACKGROUND

Small GTPase which cycles between an active GTP-bound and an inactive GDP-bound state. Mainly associated with cytoskeleton organization, in active state binds to a variety of effector proteins to regulate cellular responses such as cytoskeletal dynamics, cell migration and cell cycle . Regulates a signal transduction pathway linking plasma membrane receptors to the assembly of focal adhesions and actin stress fibers . Involved in a microtubule-dependent signal that is required for the myosin contractile ring formation during cell cycle cytokinesis . Plays an essential role in cleavage furrow formation. Required for the apical junction formation of keratinocyte cell-cell adhesion . Essential for the SPATA13-mediated regulation of cell migration and adhesion assembly and disassembly .

APPLICATION

To ensure optimal assay performance, AREX recommends conducting reagent titration tailored to each testing system for optimal detection results.

WB	1:500 - 1:1000
IHC	1:100 - 1:500
IF/ICC	1:100 - 1:500
FC	1:100 - 1:200

*Results are sample-specific. Please refer to your local assay conditions and test parameters for reference.

PRODUCT OVERVIEW

Description	Mouse monoclonal to RhoA
Specificity	Recognizes endogenous levels of RhoA protein
Antibody Type	Primary antibody
Immunogen	Recombinant fusion protein of human RhoA expressed in E. Coli
Purification	This antibody is purified through a protein G column.
Molecular Weight	Predicted: 22 kD; Observed: 46 kD kD
Form/Buffer	Mouse IgG2b. Liquid in PBS, pH 7.3, 30% glycerol, and 0.01% sodium azide.
Alternative Names	ARH12; ARHA; RHO12; Transforming protein RhoA; Rho cDNA clone 12; h12
Gene Symbol	RHOA
Entrez Gene	387(Human)
SwissProt	P61586(Human)

*AREX continuously optimizes our products. Webpage content may not reflect the latest updates. For inquiries, please contact info@arexbio.com or your local distributor.

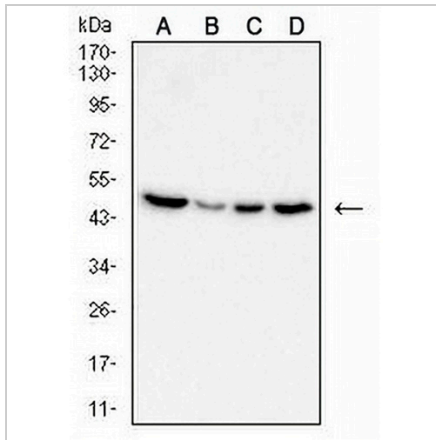
*Clone Number, Reactivity, Source/Host and Clonality can be found in the product name and Key Features section above.

DATASHEET

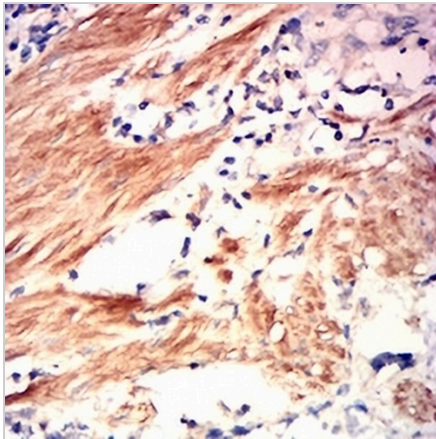
RhoA Mouse Monoclonal Antibody(C2941)

CAT. NO. AMA02553

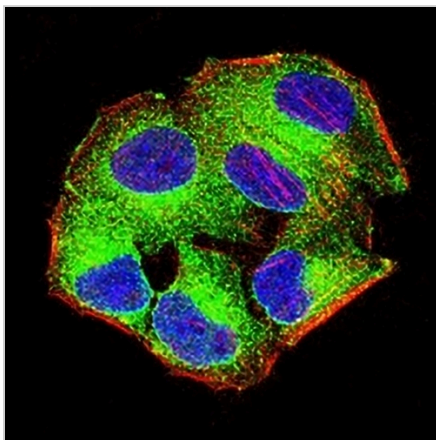
DATA



Western blot analysis of RhoA expression in Jurlat (A), MCF7 (B), A431 (C), HeLa (D) whole cell lysates. (Predicted band size: 22 kD; Observed band size: 46 kD)



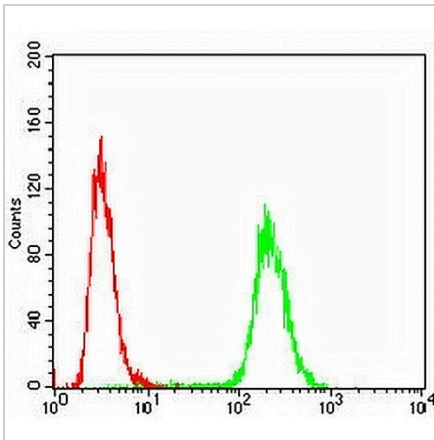
Immunohistochemical analysis of RhoA staining in human gastric cancer formalin fixed paraffin embedded tissue section. The section was pre-treated using heat mediated antigen retrieval with sodium citrate buffer (pH 6.0). The section was then incubated with the antibody at room temperature and detected using an HRP conjugated compact polymer system. DAB was used as the chromogen. The section was then counterstained with haematoxylin and mounted with DPX.



Immunofluorescent analysis of RhoA staining in HeLa cells. Formalin-fixed cells were permeabilized with 0.1% Triton X-100 in TBS for 5-10 minutes and blocked with 3% BSA-PBS for 30 minutes at room temperature. Cells were probed with the primary antibody in 3% BSA-PBS and incubated overnight at 4 °C in a humidified chamber. Cells were washed with PBST and incubated with an AREX® Fluor 488 -conjugated secondary antibody (green) in PBS at room temperature in the dark. Phalloidin - AREX® Fluor 594 was used to stain Actin filaments (red). DAPI was used to stain the cell nuclei (blue).

DATASHEET**RhoA Mouse Monoclonal Antibody(C2941)**

CAT. NO. AMA02553

DATA (CONTINUED)

Flow cytometric analysis of HeLa cells using Anti-RhoA Antibody (green) and negative control (red).

STORAGE

Store at 4°C short term. For long term storage, store at -20°C, avoiding freeze/thaw cycles.

NOTE

For Research Use Only. Not for diagnostic, therapeutics, prophylactic or in vivo use.