

DATASHEET

RPA2 Mouse Monoclonal Antibody(C2945)

CAT. NO. AMA02557

KEY FEATURES

Target	RPA2	Source / Host	Mouse
Reactivity	Human	Clonality	Monoclonal
Applications	WB, IHC, FC	Conjugation	Unconjugated
Form / Buffer	Mouse IgG1,k. Liquid in PBS, pH 7.3, 30% glycerol, and 0.01% sodium azide.	Storage	at-20°C

BACKGROUND

As part of the heterotrimeric replication protein A complex (RPA/RP-A), binds and stabilizes single-stranded DNA intermediates that form during DNA replication or upon DNA stress. It prevents their reannealing and in parallel, recruits and activates different proteins and complexes involved in DNA metabolism. Thereby, it plays an essential role both in DNA replication and the cellular response to DNA damage. In the cellular response to DNA damage, the RPA complex controls DNA repair and DNA damage checkpoint activation. Through recruitment of ATRIP activates the ATR kinase a master regulator of the DNA damage response. It is required for the recruitment of the DNA double-strand break repair factors RAD51 and RAD52 to chromatin in response to DNA damage.

APPLICATION

To ensure optimal assay performance, AREX recommends conducting reagent titration tailored to each testing system for optimal detection results.

WB	1:500 - 1:1000
IHC	1:100 - 1:500
FC	1:100 - 1:200

*Results are sample-specific. Please refer to your local assay conditions and test parameters for reference.

PRODUCT OVERVIEW

Description	Mouse monoclonal to RPA2
Specificity	Recognizes endogenous levels of RPA2 protein
Antibody Type	Primary antibody
Immunogen	Recombinant fusion protein of human RPA2 expressed in E. Coli
Purification	This antibody is purified through a protein G column.
Molecular Weight	Predicted: 29 kD; Observed: 32 kD
Form/Buffer	Mouse IgG1,k. Liquid in PBS, pH 7.3, 30% glycerol, and 0.01% sodium azide.
Alternative Names	REPA2; RPA32; RPA34; ReplI,ation protein A 32 kDa subunit; RP-A p32; ReplI,ation factor A protein 2; RF-A protein 2; ReplI,ation protein A 34 kDa subunit; RP-A p34
Gene Symbol	RPA2
Entrez Gene	6118(Human)
SwissProt	P15927(Human)

*AREX continuously optimizes our products. Webpage content may not reflect the latest updates. For inquiries, please contact info@arexbio.com or your local distributor.

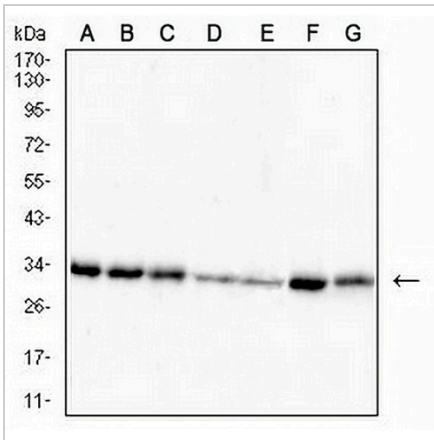
*Clone Number, Reactivity, Source/Host and Clonality can be found in the product name and Key Features section above.

DATASHEET

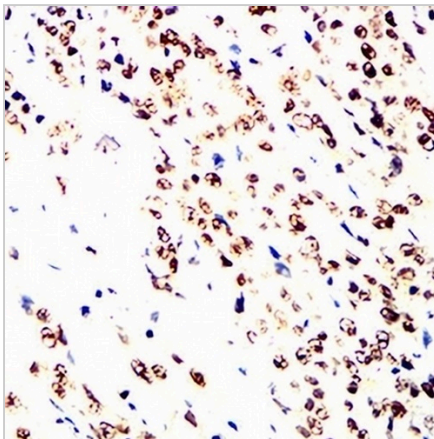
RPA2 Mouse Monoclonal Antibody(C2945)

CAT. NO. AMA02557

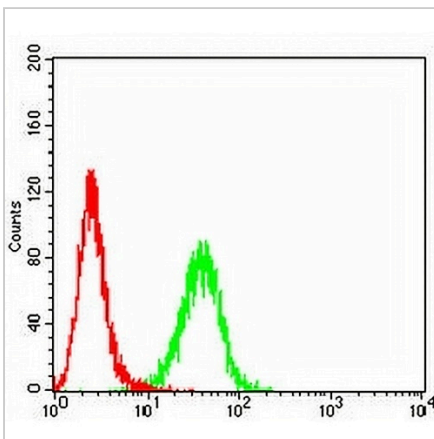
DATA



Western blot analysis of RPA2 expression in HeLa (A), MCF7 (B), T47D (C), Ramos (D), HEK293 (E), HepG2 (F), A431 (G) whole cell lysates. (Predicted band size: 29 kD; Observed band size: 32 kD)



Immunohistochemical analysis of RPA2 staining in human liver formalin fixed paraffin embedded tissue section. The section was pre-treated using heat mediated antigen retrieval with sodium citrate buffer (pH 6.0). The section was then incubated with the antibody at room temperature and detected using an HRP conjugated compact polymer system. DAB was used as the chromogen. The section was then counterstained with haematoxylin and mounted with DPX.



Flow cytometric analysis of HeLa cells using Anti-RPA2 Antibody (green) and negative control (red).

STORAGE

Store at 4°C short term. For long term storage, store at -20°C, avoiding freeze/thaw cycles.

NOTE

For Research Use Only. Not for diagnostic, therapeutics, prophylactic or in vivo use.