

**DATASHEET**

**RPL18A Mouse Monoclonal Antibody(C2946)**

CAT. NO. AMA02558

**KEY FEATURES**

Target	RPL18A	Source / Host	Mouse
Reactivity	Human, Mouse	Clonality	Monoclonal
Applications	WB, IHC	Conjugation	Unconjugated
Form / Buffer	Mouse IgG1. Liquid in PBS, pH 7.3, 30% glycerol, and 0.01% sodium azide.	Storage	at-20°C

**BACKGROUND**

Component of the large ribosomal subunit. The ribosome is a large ribonucleoprotein complex responsible for the synthesis of proteins in the cell.

**APPLICATION**

To ensure optimal assay performance, AREX recommends conducting reagent titration tailored to each testing system for optimal detection results.

WB	1:500 - 1:1000
IHC	1:100 - 1:500

\*Results are sample-specific. Please refer to your local assay conditions and test parameters for reference.

**PRODUCT OVERVIEW**

Description	Mouse monoclonal to RPL18A
Specificity	Recognizes endogenous levels of RPL18A protein
Antibody Type	Primary antibody
Immunogen	Recombinant fusion protein of human RPL18A expressed in E. Coli
Purification	This antibody is purified through a protein G column.
Molecular Weight	Predicted: 21 kD; Observed: 21 kD kD
Form/Buffer	Mouse IgG1. Liquid in PBS, pH 7.3, 30% glycerol, and 0.01% sodium azide.
Alternative Names	60S ribosomal protein L18a
Gene Symbol	RPL18A
Entrez Gene	6142(Human); 290641(Rat)
SwissProt	Q02543(Human); P62717(Mouse)

\*AREX continuously optimizes our products. Webpage content may not reflect the latest updates. For inquiries, please contact [info@arexbio.com](mailto:info@arexbio.com) or your local distributor.

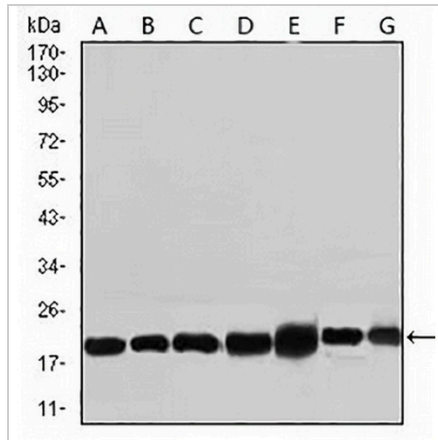
\*Clone Number, Reactivity, Source/Host and Clonality can be found in the product name and Key Features section above.

**DATASHEET**

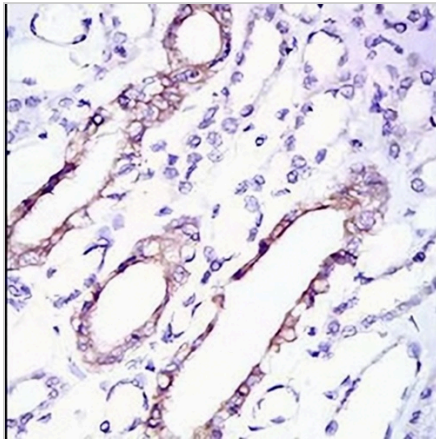
**RPL18A Mouse Monoclonal Antibody(C2946)**

CAT. NO. AMA02558

**DATA**



Western blot analysis of RPL18A expression in NIH3T3 (A), HEK293 (B), HL60 (C), Jurkat (D), Raji (E), MOLT4 (F), HeLa (G) whole cell lysates. (Predicted band size: 21 kD; Observed band size: 21 kD)



Immunohistochemical analysis of RPL18A staining in human kidney formalin fixed paraffin embedded tissue section. The section was pre-treated using heat mediated antigen retrieval with sodium citrate buffer (pH 6.0). The section was then incubated with the antibody at room temperature and detected using an HRP conjugated compact polymer system. DAB was used as the chromogen. The section was then counterstained with haematoxylin and mounted with DPX.

**STORAGE**

Store at 4°C short term. For long term storage, store at -20°C, avoiding freeze/thaw cycles.

**NOTE**

For Research Use Only. Not for diagnostic, therapeutics, prophylactic or in vivo use.