

DATASHEET

CD36L1 Mouse Monoclonal Antibody(C2950)

CAT. NO. AMA02562

KEY FEATURES

Target	CD36L1	Source / Host	Mouse
Reactivity	Human, Mouse	Clonality	Monoclonal
Applications	WB, IHC, FC	Conjugation	Unconjugated
Form / Buffer	Mouse IgG2a. Liquid in PBS, pH 7.3, 30% glycerol, and 0.01% sodium azide.	Storage	at-20°C

BACKGROUND

Receptor for different ligands such as phospholipids, cholesterol ester, lipoproteins, phosphatidylserine and apoptotic cells . Receptor for HDL, mediating selective uptake of cholesteryl ether and HDL-dependent cholesterol efflux . Also facilitates the flux of free and esterified cholesterol between the cell surface and apoB-containing lipoproteins and modified lipoproteins, although less efficiently than HDL. May be involved in the phagocytosis of apoptotic cells, via its phosphatidylserine binding activity .

APPLICATION

To ensure optimal assay performance, AREX recommends conducting reagent titration tailored to each testing system for optimal detection results.

WB	1:500 - 1:1000
IHC	1:100 - 1:500
FC	1:100 - 1:200

*Results are sample-specific. Please refer to your local assay conditions and test parameters for reference.

PRODUCT OVERVIEW

Description	Mouse monoclonal to CD36L1
Specificity	Recognizes endogenous levels of CD36L1 protein
Antibody Type	Primary antibody
Immunogen	Recombinant fusion protein of human CD36L1 expressed in E. Coli
Purification	This antibody is purified through a protein G column.
Molecular Weight	Predicted: 60 kD; Observed: 80 kD
Form/Buffer	Mouse IgG2a. Liquid in PBS, pH 7.3, 30% glycerol, and 0.01% sodium azide.
Alternative Names	CD36L1; CLA1; Scavenger receptor class B member 1; SRB1; CD36 and LIMPII analogous 1; CLA-1; CD36 antigen-like 1; Collagen type I receptor, thrombospondin receptor-like 1; SR-BI; CD36
Gene Symbol	SCARB1
Entrez Gene	949(Human); 25073(Rat)
SwissProt	Q8WTV0(Human); Q61009(Mouse)

*AREX continuously optimizes our products. Webpage content may not reflect the latest updates. For inquiries, please contact info@arexbio.com or your local distributor.

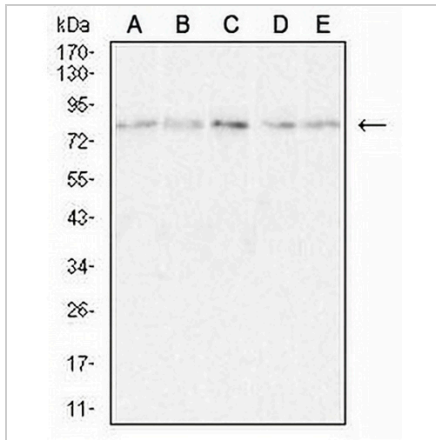
*Clone Number, Reactivity, Source/Host and Clonality can be found in the product name and Key Features section above.

DATASHEET

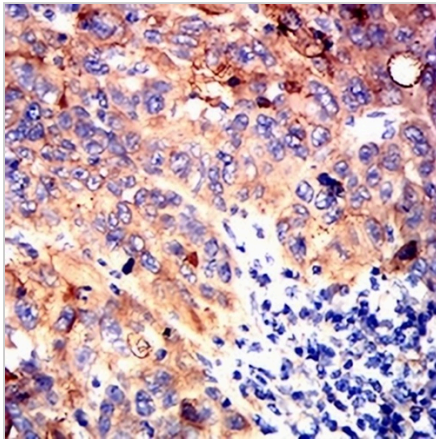
CD36L1 Mouse Monoclonal Antibody(C2950)

CAT. NO. AMA02562

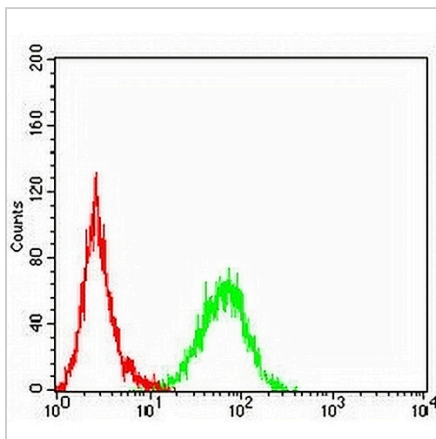
DATA



Western blot analysis of CD36L1 expression in HeLa (A), U937 (B), HePG2 (C), NIH/3T3 (D), mouse liver (E) whole cell lysates. (Predicted band size: 60 kD; Observed band size: 80 kD)



Immunohistochemical analysis of CD36L1 staining in human endometrial cancer formalin fixed paraffin embedded tissue section. The section was pre-treated using heat mediated antigen retrieval with sodium citrate buffer (pH 6.0). The section was then incubated with the antibody at room temperature and detected using an HRP conjugated compact polymer system. DAB was used as the chromogen. The section was then counterstained with haematoxylin and mounted with DPX.



Flow cytometric analysis of U937 cells using Anti-CD36L1 Antibody (green) and negative control (red).

STORAGE

Store at 4°C short term. For long term storage, store at -20°C, avoiding freeze/thaw cycles.

NOTE

For Research Use Only. Not for diagnostic, therapeutics, prophylactic or in vivo use.