

DATASHEET

SETD7 Mouse Monoclonal Antibody(C2955)

CAT. NO. AMA02567

KEY FEATURES

| | | | |
|---------------|---|---------------|--------------|
| Target | SETD7 | Source / Host | Mouse |
| Reactivity | Human, Rat, Monkey | Clonality | Monoclonal |
| Applications | WB, FC | Conjugation | Unconjugated |
| Form / Buffer | Mouse IgG2a. Liquid in PBS, pH 7.3, 30% glycerol, and 0.01% sodium azide. | Storage | at-20°C |

BACKGROUND

Histone methyltransferase that specifically monomethylates 'Lys-4' of histone H3 . H3 'Lys-4' methylation represents a specific tag for epigenetic transcriptional activation . Plays a central role in the transcriptional activation of genes such as collagenase or insulin . Recruited by IPF1/PDX-1 to the insulin promoter, leading to activate transcription . Also has methyltransferase activity toward non-histone proteins such as CGAS, p53/TP53, TAF10, and possibly TAF7 by recognizing and binding the [KR]-[STA]-K in substrate proteins . Monomethylates 'Lys-189' of TAF10, leading to increase the affinity of TAF10 for RNA polymerase II . Monomethylates 'Lys-372' of p53/TP53, stabilizing p53/TP53 and increasing p53/TP53-mediated transcriptional activation .

APPLICATION

To ensure optimal assay performance, AREX recommends conducting reagent titration tailored to each testing system for optimal detection results.

| | |
|----|----------------|
| WB | 1:500 - 1:1000 |
| FC | 1:100 - 1:200 |

*Results are sample-specific. Please refer to your local assay conditions and test parameters for reference.

PRODUCT OVERVIEW

| | |
|-------------------|--|
| Description | Mouse monoclonal to SETD7 |
| Specificity | Recognizes endogenous levels of SETD7 protein |
| Antibody Type | Primary antibody |
| Immunogen | Recombinant fusion protein of human SETD7 expressed in E. Coli |
| Purification | This antibody is purified through a protein G column. |
| Molecular Weight | Predicted: 41 kD; Observed: 70 kD kD |
| Form/Buffer | Mouse IgG2a. Liquid in PBS, pH 7.3, 30% glycerol, and 0.01% sodium azide. |
| Alternative Names | KIAA1717; KMT7; SET7; SET9; Histone-lysine N-methyltransferase SETD7; Histone H3-K4 methyltransferase SETD7; H3-K4-HMTase SETD7; Lysine N-methyltransferase 7; SET domain-containing protein 7; SET7/9 |
| Gene Symbol | SETD7 |
| Entrez Gene | 80854(Human) |
| SwissProt | Q8WTS6(Human) |

*AREX continuously optimizes our products. Webpage content may not reflect the latest updates. For inquiries, please contact info@arexbio.com or your local distributor.

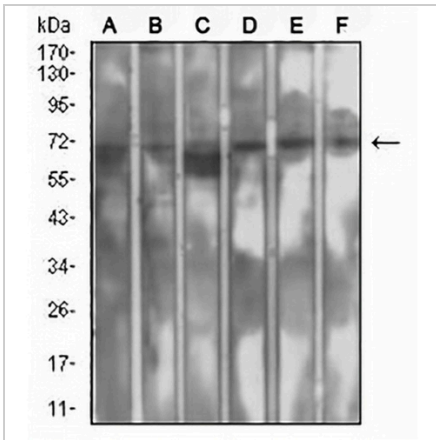
*Clone Number, Reactivity, Source/Host and Clonality can be found in the product name and Key Features section above.

DATASHEET

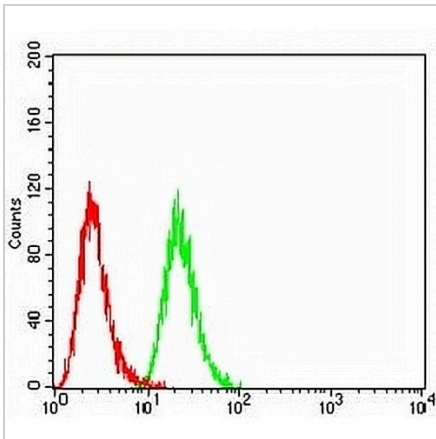
SETD7 Mouse Monoclonal Antibody(C2955)

CAT. NO. AMA02567

DATA



Western blot analysis of SETD7 expression in MCF7 (A), HeLa (B), A549 (C), COS7 (D), Jurkat (E), PC12 (F) whole cell lysates. (Predicted band size: 41 kD; Observed band size: 70 kD)



Flow cytometric analysis of HeLa cells using Anti-SETD7 Antibody (green) and negative control (red).

STORAGE

Store at 4°C short term. For long term storage, store at -20°C, avoiding freeze/thaw cycles.

NOTE

For Research Use Only. Not for diagnostic, therapeutics, prophylactic or in vivo use.