

DATASHEET

SHH Mouse Monoclonal Antibody(C2958)

CAT. NO. AMA02570

KEY FEATURES

Target	SHH	Source / Host	Mouse
Reactivity	Human, Mouse, Monkey	Clonality	Monoclonal
Applications	WB, IHC, FC	Conjugation	Unconjugated
Form / Buffer	Mouse IgG1. Liquid in PBS, pH 7.3, 30% glycerol, and 0.01% sodium azide.	Storage	at-20°C

BACKGROUND

The C-terminal part of the sonic hedgehog protein precursor displays an autoproteolysis and a cholesterol transferase activity . Both activities result in the cleavage of the full-length protein into two parts (ShhN and ShhC) followed by the covalent attachment of a cholesterol moiety to the C-terminal of the newly generated ShhN . Both activities occur in the endoplasmic reticulum . Once cleaved, ShhC is degraded in the endoplasmic reticulum .

APPLICATION

To ensure optimal assay performance, AREX recommends conducting reagent titration tailored to each testing system for optimal detection results.

WB	1:500 - 1:1000
IHC	1:100 - 1:500
FC	1:100 - 1:200

*Results are sample-specific. Please refer to your local assay conditions and test parameters for reference.

PRODUCT OVERVIEW

Description	Mouse monoclonal to SHH
Specificity	Recognizes endogenous levels of SHH protein
Antibody Type	Primary antibody
Immunogen	Recombinant fusion protein of human SHH expressed in E. Coli
Purification	This antibody is purified through a protein G column.
Molecular Weight	Predicted: 50 kD; Observed: 50 kD kD
Form/Buffer	Mouse IgG1. Liquid in PBS, pH 7.3, 30% glycerol, and 0.01% sodium azide.
Alternative Names	SonIC, hedgehog protein; SHH; HHG-1
Gene Symbol	SHH
Entrez Gene	6469(Human); 29499(Rat)
SwissProt	Q15465(Human); Q62226(Mouse)

*AREX continuously optimizes our products. Webpage content may not reflect the latest updates. For inquiries, please contact info@arexbio.com or your local distributor.

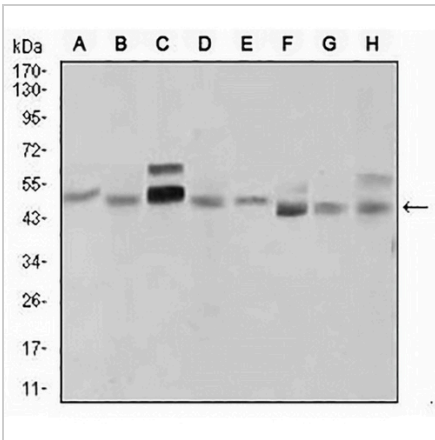
*Clone Number, Reactivity, Source/Host and Clonality can be found in the product name and Key Features section above.

DATASHEET

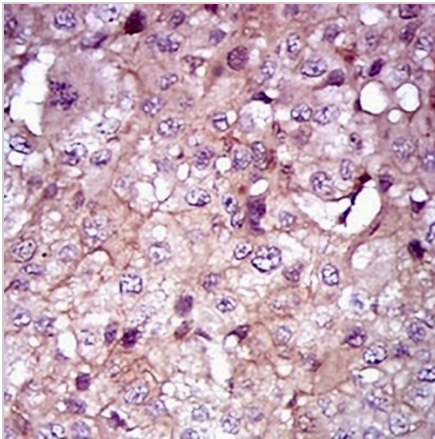
SHH Mouse Monoclonal Antibody(C2958)

CAT. NO. AMA02570

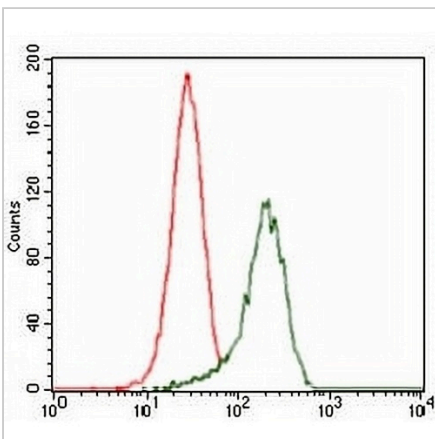
DATA



Western blot analysis of SHH expression in LNCaP (A), HepG2 (B), PANC1 (C), HeLa (D), SKNSH (E), F9 (F), NIH3T3 (G), COS7 (H) whole cell lysates. (Predicted band size: 50 kD; Observed band size: 50 kD)



Immunohistochemical analysis of SHH staining in human liver cancer formalin fixed paraffin embedded tissue section. The section was pre-treated using heat mediated antigen retrieval with sodium citrate buffer (pH 6.0). The section was then incubated with the antibody at room temperature and detected using an HRP conjugated compact polymer system. DAB was used as the chromogen. The section was then counterstained with haematoxylin and mounted with DPX.



Flow cytometric analysis of HeLa cells using Anti-SHH Antibody (green) and negative control (red).

STORAGE

Store at 4°C short term. For long term storage, store at -20°C, avoiding freeze/thaw cycles.

NOTE

For Research Use Only. Not for diagnostic, therapeutics, prophylactic or in vivo use.