

**DATASHEET**

**Siglec 15 Mouse Monoclonal Antibody(C2959)**

CAT. NO. AMA02571

**KEY FEATURES**

Target	Siglec 15	Source / Host	Mouse
Reactivity	Human, Monkey	Clonality	Monoclonal
Applications	WB, IHC, IF/ICC, FC	Conjugation	Unconjugated
Form / Buffer	Mouse IgG1. Liquid in PBS, pH 7.3, 30% glycerol, and 0.01% sodium azide.	Storage	at-20°C

**BACKGROUND**

Binds sialylated glycoproteins.

**APPLICATION**

To ensure optimal assay performance, AREX recommends conducting reagent titration tailored to each testing system for optimal detection results.

WB	1:500 - 1:1000
IHC	1:100 - 1:500
IF/ICC	1:100 - 1:500
FC	1:100 - 1:200

\*Results are sample-specific. Please refer to your local assay conditions and test parameters for reference.

**PRODUCT OVERVIEW**

Description	Mouse monoclonal to Siglec 15
Specificity	Recognizes endogenous levels of Siglec 15 protein
Antibody Type	Primary antibody
Immunogen	Recombinant fusion protein of human Siglec 15 expressed in HEK293
Purification	This antibody is purified through a protein G column.
Molecular Weight	Predicted: 36 kD; Observed: 60 kD
Form/Buffer	Mouse IgG1. Liquid in PBS, pH 7.3, 30% glycerol, and 0.01% sodium azide.
Alternative Names	CD33L3; SialIC, acid-binding Ig-like lectin 15; Siglec-15; CD33 antigen-like 3
Gene Symbol	SIGLEC15
Entrez Gene	284266(Human)
SwissProt	Q6ZMC9(Human)

\*AREX continuously optimizes our products. Webpage content may not reflect the latest updates. For inquiries, please contact [info@arexbio.com](mailto:info@arexbio.com) or your local distributor.

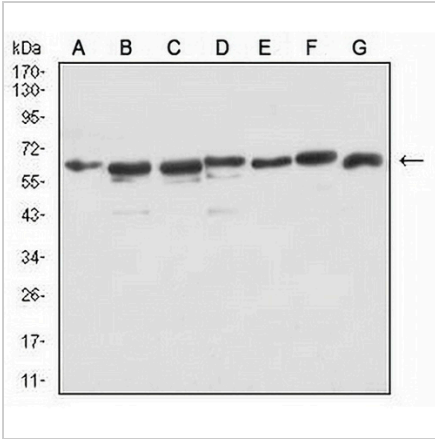
\*Clone Number, Reactivity, Source/Host and Clonality can be found in the product name and Key Features section above.

**DATASHEET**

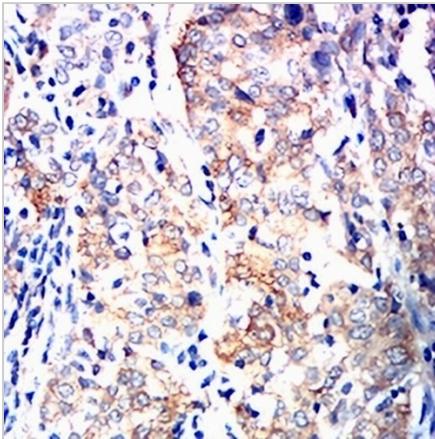
**Siglec 15 Mouse Monoclonal Antibody(C2959)**

CAT. NO. AMA02571

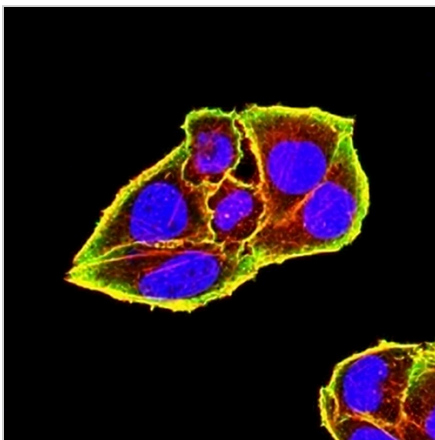
**DATA**



Western blot analysis of Siglec 15 expression in PC2 (A), LNCap (B), HEK293 (C), PC3 (D), DU145 (E), COS7 (F), HEK293-6e (G) whole cell lysates. (Predicted band size: 36 kD; Observed band size: 60 kD)



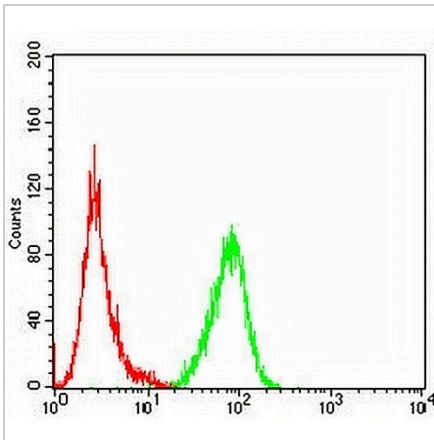
Immunohistochemical analysis of Siglec 15 staining in human cervical cancer formalin fixed paraffin embedded tissue section. The section was pre-treated using heat mediated antigen retrieval with sodium citrate buffer (pH 6.0). The section was then incubated with the antibody at room temperature and detected using an HRP conjugated compact polymer system. DAB was used as the chromogen. The section was then counterstained with haematoxylin and mounted with DPX.



Immunofluorescent analysis of Siglec 15 staining in HeLa cells. Formalin-fixed cells were permeabilized with 0.1% Triton X-100 in TBS for 5-10 minutes and blocked with 3% BSA-PBS for 30 minutes at room temperature. Cells were probed with the primary antibody in 3% BSA-PBS and incubated overnight at 4 °C in a humidified chamber. Cells were washed with PBST and incubated with an AREX® Fluor 488 -conjugated secondary antibody (green) in PBS at room temperature in the dark. Phalloidin - AREX® Fluor 594 was used to stain Actin filaments (red). DAPI was used to stain the cell nuclei (blue).

**DATASHEET****Siglec 15 Mouse Monoclonal Antibody(C2959)**

CAT. NO. AMA02571

**DATA (CONTINUED)**

Flow cytometric analysis of Jurkat cells using Anti-Siglec 15 Antibody (green) and negative control (red).

**STORAGE**

Store at 4°C short term. For long term storage, store at -20°C, avoiding freeze/thaw cycles.

**NOTE**

For Research Use Only. Not for diagnostic, therapeutics, prophylactic or in vivo use.