

DATASHEET

SLC45A3 Mouse Monoclonal Antibody(C2965)

CAT. NO. AMA02577

KEY FEATURES

Target	SLC45A3	Source / Host	Mouse
Reactivity	Human	Clonality	Monoclonal
Applications	WB, FC	Conjugation	Unconjugated
Form / Buffer	Mouse IgG2b. Liquid in PBS, pH 7.3, 30% glycerol, and 0.01% sodium azide.	Storage	at-20°C

BACKGROUND

Proton-associated sucrose transporter. May be able to transport also glucose and fructose.

APPLICATION

To ensure optimal assay performance, AREX recommends conducting reagent titration tailored to each testing system for optimal detection results.

WB	1:500 - 1:1000
FC	1:100 - 1:200

*Results are sample-specific. Please refer to your local assay conditions and test parameters for reference.

PRODUCT OVERVIEW

Description	Mouse monoclonal to SLC45A3
Specificity	Recognizes endogenous levels of SLC45A3 protein
Antibody Type	Primary antibody
Immunogen	Recombinant fusion protein of human SLC45A3 expressed in E. Coli
Purification	This antibody is purified through a protein G column.
Molecular Weight	Predicted: 59 kD; Observed: 70 kD
Form/Buffer	Mouse IgG2b. Liquid in PBS, pH 7.3, 30% glycerol, and 0.01% sodium azide.
Alternative Names	PCANAP6; PRST; Solute carrier family 45 member 3; Prostate cancer-associated protein 6; Prostein
Gene Symbol	SLC45A3
Entrez Gene	85414(Human)
SwissProt	Q96JT2(Human)

*AREX continuously optimizes our products. Webpage content may not reflect the latest updates. For inquiries, please contact info@arexbio.com or your local distributor.

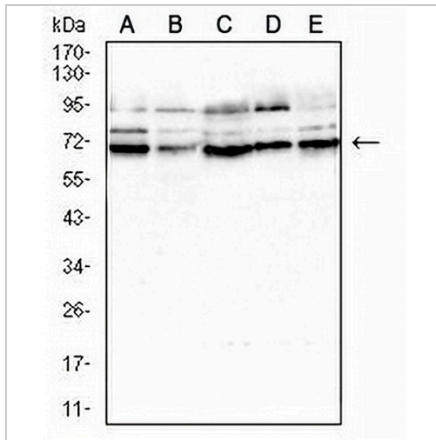
*Clone Number, Reactivity, Source/Host and Clonality can be found in the product name and Key Features section above.

DATASHEET

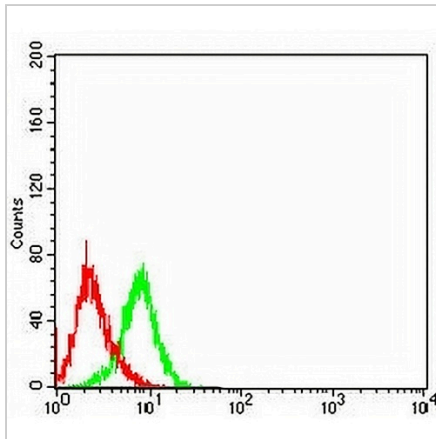
SLC45A3 Mouse Monoclonal Antibody(C2965)

CAT. NO. AMA02577

DATA



Western blot analysis of SLC45A3 expression in LNcap (A), PC3 (B), HepG2 (C), SMMC7721 (D), DU145 (E) whole cell lysates. (Predicted band size: 59 kD; Observed band size: 70 kD)



Flow cytometric analysis of PC3 cells using Anti-SLC45A3 Antibody (green) and negative control (red).

STORAGE

Store at 4°C short term. For long term storage, store at -20°C, avoiding freeze/thaw cycles.

NOTE

For Research Use Only. Not for diagnostic, therapeutics, prophylactic or in vivo use.